



Walham Grove, SW6

£2,250 Per week

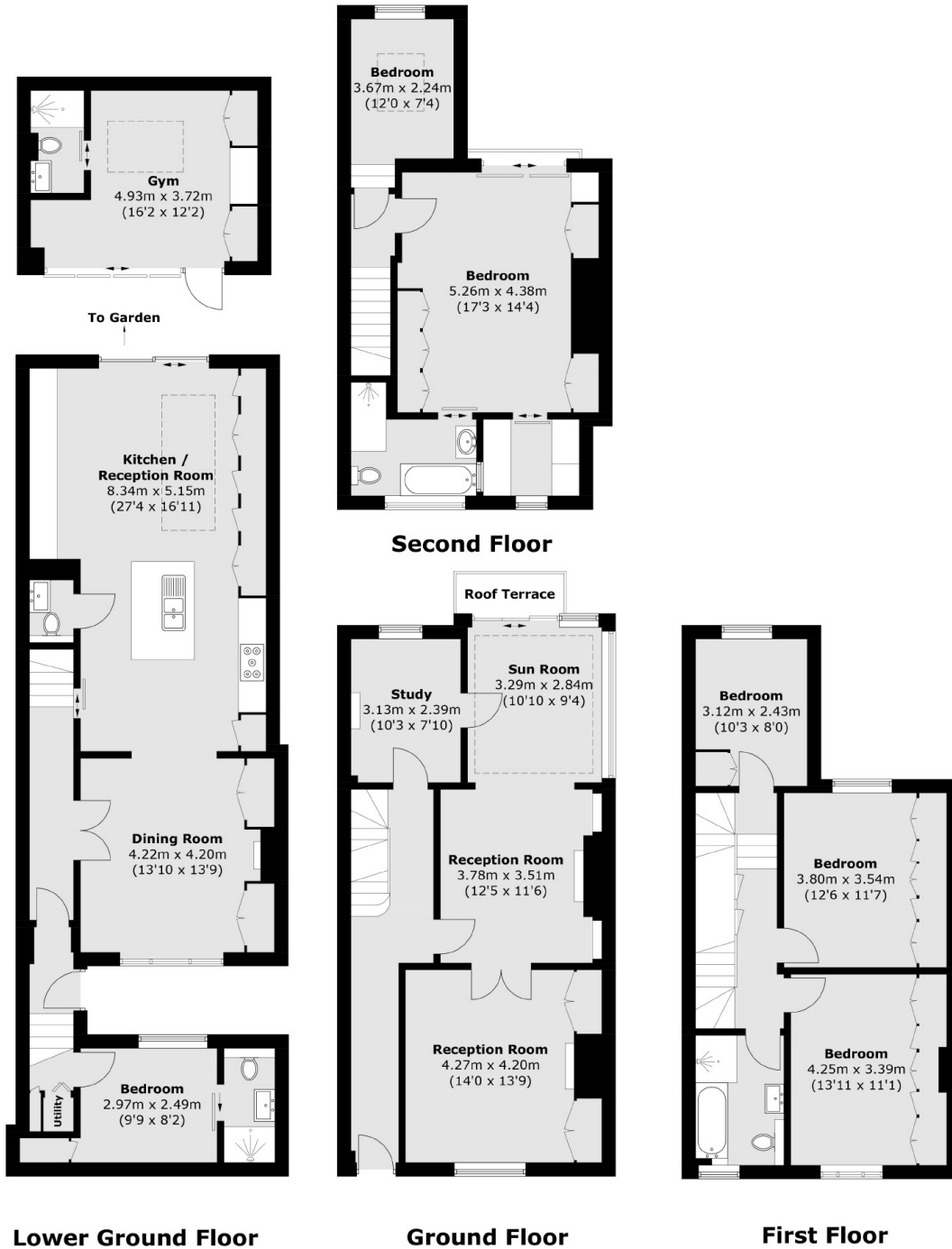
This property is a stunning six bedroom, four bathroom family home. Spanning four floors, this elegant residence boasts four generous reception rooms, perfect for entertaining or relaxing with family. The property features an open plan kitchen, spacious bedrooms with ample storage, and luxurious bathrooms. Outside, you'll find a beautifully landscaped garden with a built in BBQ and a summerhouse.

Located in a highly sought-after area, this home is close to excellent schools, vibrant local amenities, and convenient transport links.

Features

- Six Bedrooms
- Four Reception Rooms
- Open-Plan Kitchen Dining Area
- Private Garden
- Modern Finish
- Built in Storage

Walham Grove, London, SW6



Total area (approx.): 243.3 sq. m (2,618.8 sq. ft)
Gym (approx.): 18.8 sq. m (202.4 sq. ft)
Roof Terrace: 2.0 sq. m (21.5 sq. ft)

Dexters

Fulham
569 Fulham Road
London
SW6 1ES
Lettings
020 7386 7386

Energy Rating: . We aim to make our particulars both accurate and reliable. However they are not guaranteed; nor do they form part of an offer or contract. If you require clarification on any points then please contact us, especially if you're traveling some distance to view. Please note that appliances and heating systems have not been tested and therefore no warranties can be given as to their good working order.

RICS Regulated
Estate Agent
and Letting Agent

dexters.co.uk