



9 Alton Close, Bexley, DA5 3QJ

Offers In Excess Of £800,000

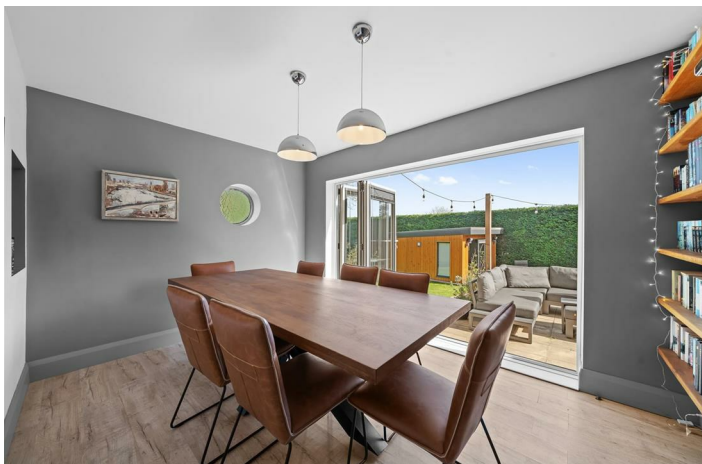
- Five Bedrooms
- Cinema Room
- Outdoor Pool
- Detached House
- Great location
- EPC Rating C

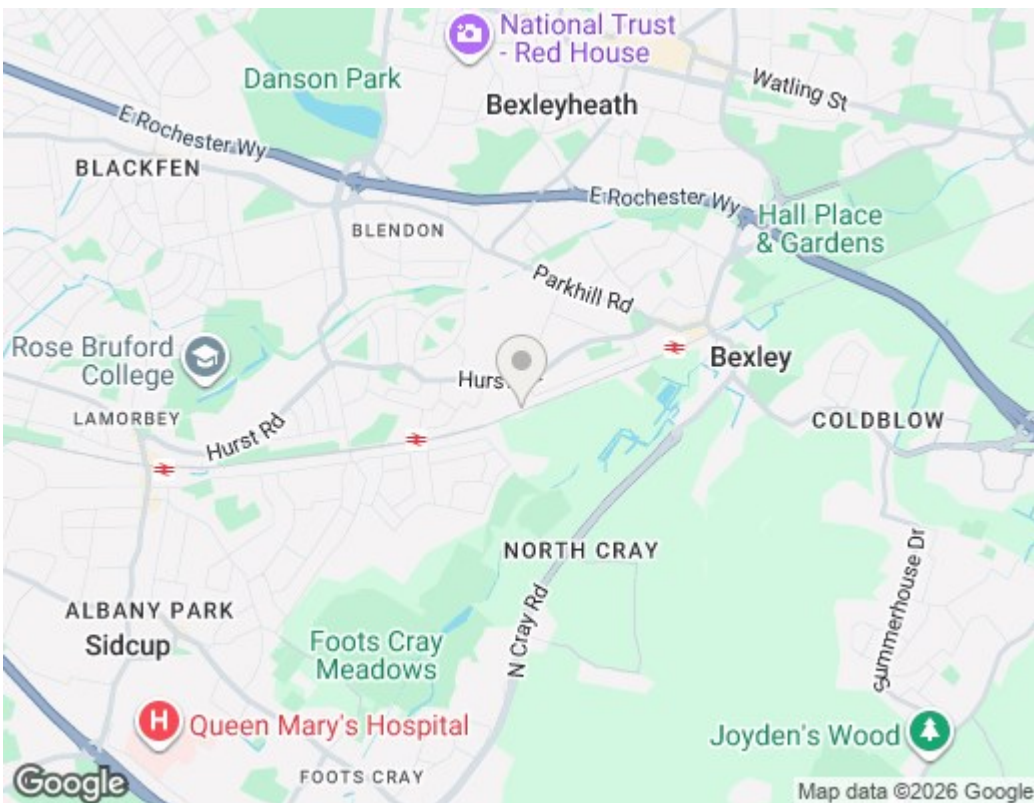
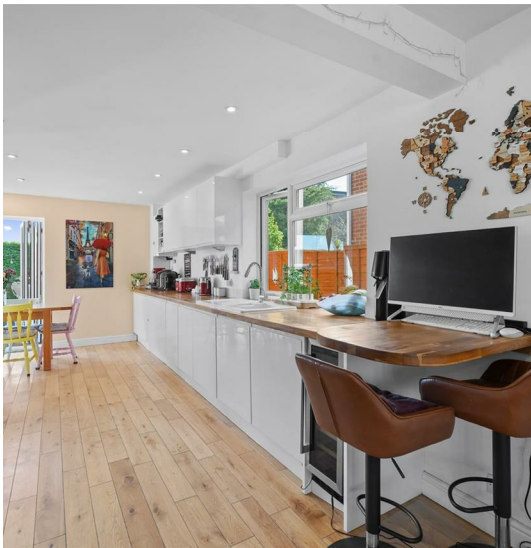
9 Alton Close, Bexley DA5 3QJ

If ever a house was built for entertaining then this is it! With a total area of over 2000sq ft come and take a look at Alton Close. The open plan kitchen and reception room spreads to nearly 30ft and family movie night will be a regular thing with the dedicated cinema room! Five bedrooms occupy the first floor plus two bathrooms and a walk in wardrobe. Its difficult to describe the grounds of the property but we'll start with a heated swimming pool perfect for summer days. Then there is the stunning garden room which overlooks the pool. Add to this a garage en bloc, to get a property with this many high end features in this price bracket is practically unheard of so we highly recommend a viewing appointment.



Council Tax Band: F





Viewings

Viewings by arrangement only.
 Call 0208 859 1100 to make an appointment.

EPC Rating:

C

Energy Efficiency Rating		Current	Potential
Very energy efficient - lower running costs			
(92 plus)	A		
(81-91)	B		
(69-80)	C	74	78
(55-68)	D		
(39-54)	E		
(21-38)	F		
(1-20)	G		
Not energy efficient - higher running costs			
England & Wales		EU Directive 2002/91/EC	