



Whiston Road, E2

£360,000

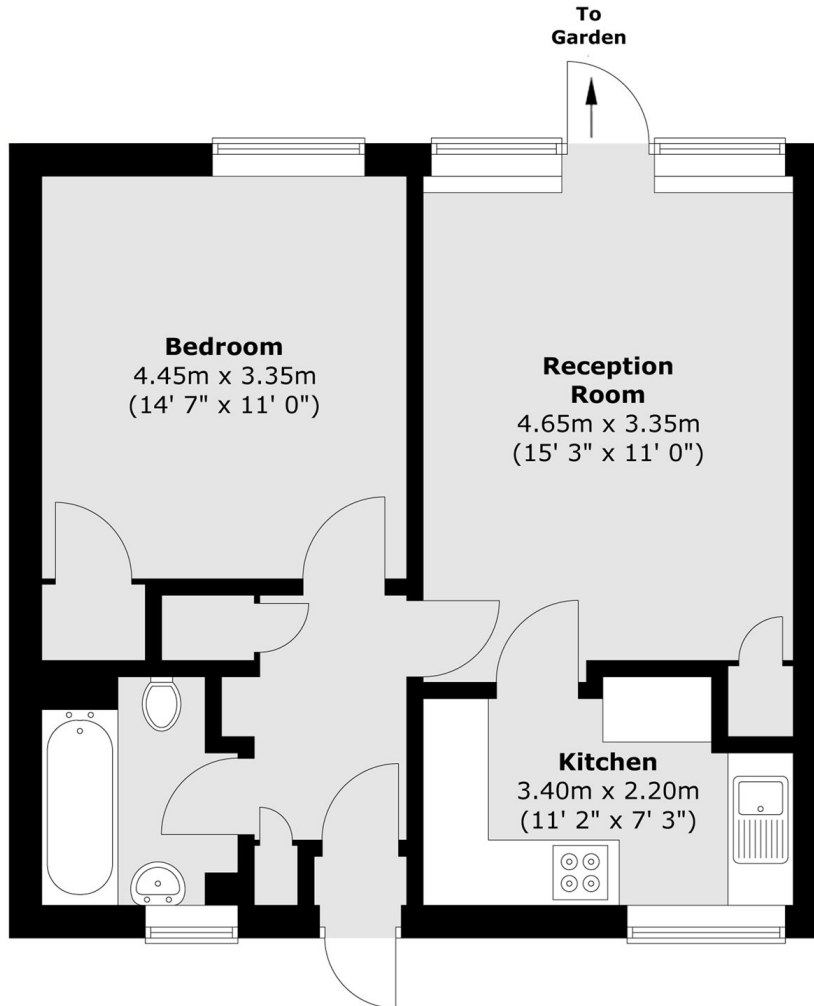
A one bedroom purpose built apartment measuring in excess of 500 sq.ft, featuring a private garden, wooden flooring, and offered chain free. The internal layout comprises a separate kitchen and an open plan living and dining area.

The property is situated 0.5 miles from Broadway Market and its local amenities. Regent's Canal is located immediately adjacent to the property, providing routes to Islington, King's Cross, and Victoria Park. Transport is provided via Haggerston Overground station, which offers direct links to the City.

Features

- Chain Free
- Private Garden
- 500 sq.ft
- Local Amenities
- Regents Canal
- Transport Links

Whiston Road, London, E2



Total area (approx.) : 46.5 sq. m (500 sq. ft)