



ENDLESHAM ROAD, SW12

£725,000

- Split level Victorian apartment
- Two bedrooms
- Two bathrooms
- Nightingale Triangle
- Modernised throughout
- Energy rating: C





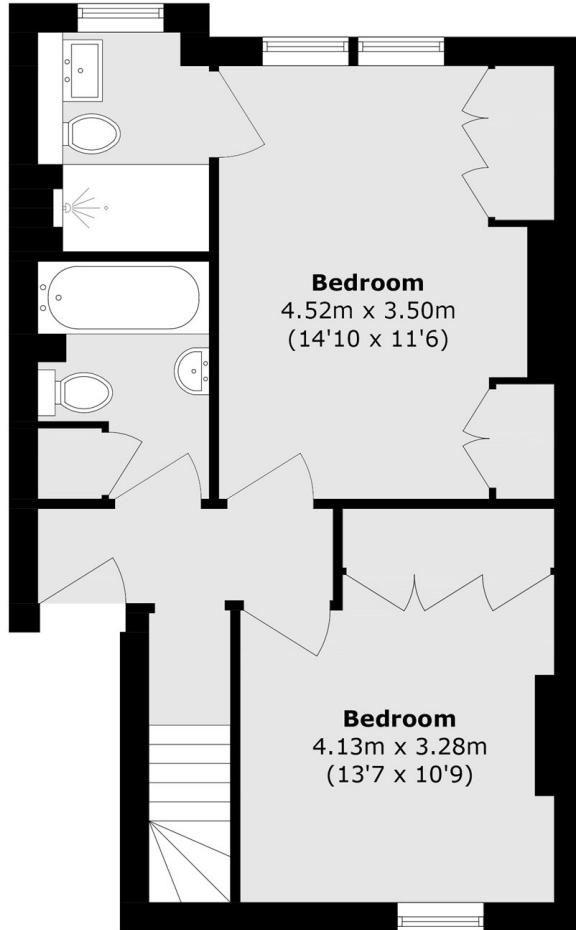
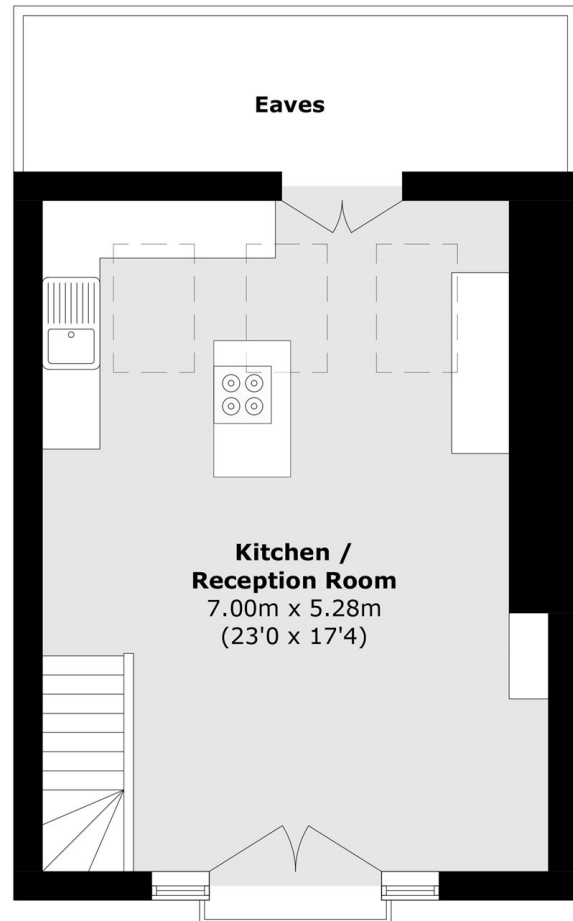
ABOUT THE HOME

A spacious two bedroom, two bathroom split level Victorian apartment located in the heart of the Nightingale Triangle. The property has been maintained to a very high standard by the current owners and benefits from 870 sqft of living space.

Located on a popular road in the desirable Nightingale Triangle in Balham, this property is perfectly situated for easy access into Balham where there is an excellent array of shops, bars and restaurants on offer. The wide open spaces of Tooting Bec Common, Clapham Common and Wandsworth Common are also close by, as are the excellent transport links including Balham mainline and underground stations.





**Second Floor****Third Floor**

Total area (approx.): 80.9 sq. m (870.8 sq. ft)
(Excluding Eaves)

JACKSONS BALHAM

8-11 Balham Station Road,
London, SW12 9SG
Sales: 020 8675 6555
Lettings: 020 8675 6565

Energy Rating: We aim to make our particulars both accurate and reliable. However they are not guaranteed; nor do they form part of an offer or contract. If you require clarification on any points then please contact us, especially if you're traveling some distance to view. Please note that appliances and heating systems have not been tested and therefore no warranties can be given as to their good working order.