



5 Emerald Way
Bridgwater, Somerset, TA6 4GY

Brightestmove

Brightest move

£245,000



Brightestmove are delighted to bring to market this beautifully unique take on modern living.

Located on the sought-after Kings Down Estate, this immaculately presented three-bedroom semi-detached home combines contemporary design with charming character features, and benefits from off-road parking. The property has been thoughtfully upgraded throughout with stylish touches, including flagstone-style flooring, a modern kitchen fitted with oak worktops and elegant wall and base units, and a feature electric fireplace with a wooden mantelpiece, adding a cosy, cottage-style feel to this otherwise modern home. Further highlights include a spacious garden, a main bedroom with en suite, and a downstairs cloakroom for added convenience.

The accommodation briefly comprises: an inviting entrance hall, a bright and comfortable living room, and a well-appointed kitchen/diner with understairs storage cupboard and a separate cloakroom. Upstairs, the property offers three generously sized bedrooms, including a master with en suite, and a contemporary family bathroom. This warm and characterful home is perfect for those seeking something a little different, without compromising on modern comforts. Early viewing is highly recommended.



Bridgwater is an emerging town situated in the heart of the borough of Sedgemoor and within 11 miles of Taunton and 38 miles of Bristol. The town which is famed for its annual carnival is a thriving place with many new jobs being created in recent years.

For more information or an appointment to view please contact the vendors sole agents.

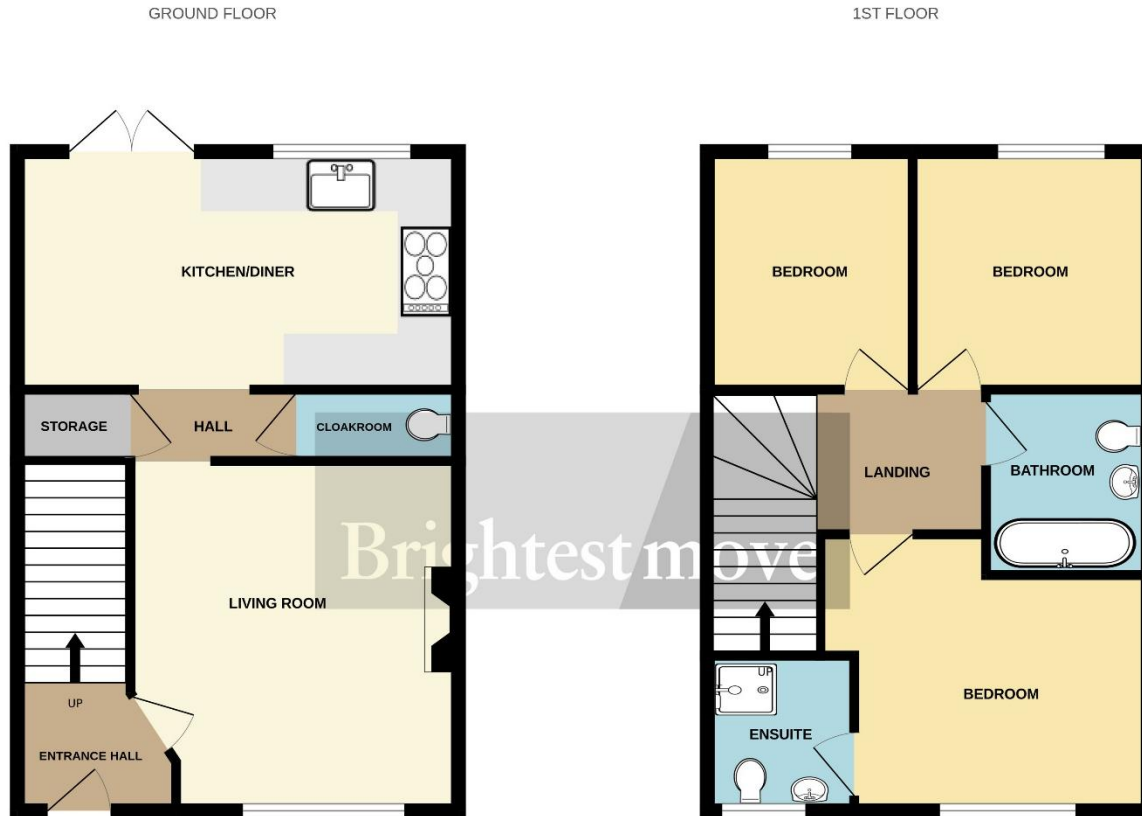
SERVICES: Mains gas, electricity, water and drainage

HEATING: Gas central heating

TENURE: Freehold

COUNCIL TAX BAND: C

ESTATE CHARGE: £175 per annum



Living Room 13' 10" x 12' 02" (4.22m x 3.71m)

Kitchen/Diner 15' 05" x 9' 05" (4.7m x 2.87m)

Bedroom One 12' 01" x 9' 04" (3.68m x 2.84m)

Bedroom Two 10' 09" x 8' 07" (3.28m x 2.62m)

Bedroom Three 11' 07" x 6' 07" (3.53m x 2.01m)

Score	Energy rating	Current	Potential
92+	A		95 A
81-91	B	83 B	
69-80	C		
55-68	D		
39-54	E		
21-38	F		
1-20	G		

No statement in these details is to be relied upon as representation of fact, and purchasers should satisfy themselves by inspection or otherwise as to the accuracy of the statements contained within. These details do not constitute any part of any offer or contract. CMH Southwest limited trading as Brightest Move and their employees and agents do not have any authority to give warranty or representation whatsoever in respect of this property. These details and all statements herein are provided without any responsibility on the part of CMH Southwest limited trading as Brightest Move or the vendors. CMH Southwest limited trading as Brightest Move has not tested the equipment or central heating system mentioned in these particulars and the purchasers are advised to satisfy themselves as to the working order and condition. Measurements: Great care is taken when measuring, but measurements should not be relied upon for ordering carpets, equipment, etc. This property sheet forms part of our database, and is protected by the database right and copyright laws. No unauthorised copying or distribution without permission.

28 High Street, Bridgwater, Somerset TA6 3BJ

Tel: 01278 420444

bridgwater@brightestmove.co.uk

www.brightestmove.co.uk

Brightest move