



GUIDE PRICE

£500,000

Main Road

Westerham, TN16 2HP

PROPERTY SUMMARY

GUIDE PRICE £500,000 - £550,000 Set back from the road, this detached bungalow is situated in this sought after location and comprises four bedrooms, reception room, family bathroom, guest wc and is an ideal opportunity for the property developer/speculator or serious DIY enthusiast to develop and modernise/extend STPP - benefits include off street parking, gas central heating and surrounding gardens. Biggin Hill is known for its community spirit and beautiful surroundings and local schools are nearby. The property is offered to the market CHAIN FREE

4



1



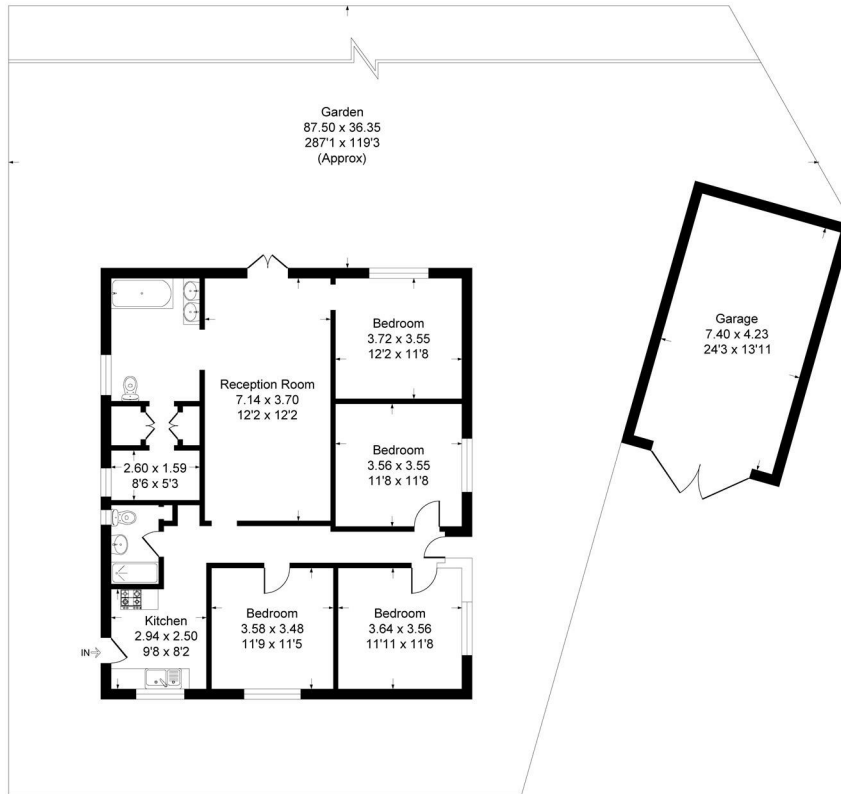
1





Main Road, Westerham, Kent,

Approximate Gross Internal Area 124.2 sq m / 1338 sq ft
 Garage = 31.3 sq m / 337 sq ft
 Total = 155.5 sq m / 1675 sq ft



Ground Floor



This plan is for layout guidance only. Not drawn to scale unless stated. Windows and door openings are approximate. Whilst every care is taken in the preparation of this plan, please check all dimensions, shapes and compass bearings before making any decisions reliant upon them.
 Produced By Planpix



LOCAL AUTHORITY

TENURE
Freehold

EPC RATING
D

COUNCIL TAX BAND
F

VIEWINGS
By prior appointment only

| Energy Efficiency Rating | | Current | Potential |
|---|--|----------------------------|-----------|
| Very energy efficient - lower running costs | | | |
| (92 plus) A | | | |
| (81-91) B | | | |
| (69-80) C | | | |
| (55-68) D | | 64 | |
| (39-54) E | | | |
| (21-38) F | | | |
| (1-20) G | | | |
| Not energy efficient - higher running costs | | | |
| England & Wales | | EU Directive 2002/91/EC | |

Agents Note: Whilst every care has been taken to prepare these particulars, they are for guidance purposes only. All measurements are approximate and are for general guidance purposes only and whilst every care has been taken to ensure their accuracy, they should not be relied upon and potential buyers/tenants are advised to recheck the measurements



OFFICE ADDRESS

1&2 The Grange
 Westerham
 Kent
 TN16 7AH

OFFICE DETAILS

01959 587 460
 infowh@sinclairhammelton.co.uk