



Northdown Road, Hornchurch, Essex, RM11 1NF

- Double Garage
- Four Bedrooms
- Driveway For Three Cars
  - End Of Terrace
- 1.3 Miles to Romford Station
  - 70' Rear Garden
- Potential To Further Extend STPP

**£650,000 - Freehold - Council Tax: E**

# Northdown Road

Hornchurch, RM11 1NF



## Entrance Hall

10'4 x 6'3 (3.15m x 1.91m)

Entrance door, spotlights, radiator, tiled flooring.

## Reception Room

26'8 x 13' (8.13m x 3.96m)

Double glazed window to front, underfloor heating, spotlights, ceiling speakers, double glazed window to rear, air conditioning unit, French doors to rear, vinyl flooring.

## Kitchen/Dining Room

28'6 x 17' (8.69m x 5.18m)

Double glazed bay window to front, wall and base units, sink with hot tap, integrated double oven and microwave, breakfast bar with built in induction hob and extractor, double glazed window to rear, French doors to rear, radiator, tiled flooring.

## Conservatory

13'11 x 8'2 (4.24m x 2.49m)

Double glazed windows to side and rear, double glazed door to rear, tiled flooring, underfloor heating.

## Ground Floor WC

7'8 x 3'1 (2.34m x 0.94m)

Double glazed window to rear, low level WC, vanity wash hand basin, radiator, underfloor heating.

## Landing

oak flooring, loft access.

## Bedroom One

17'6 x 13' (5.33m x 3.96m)

Double glazed window to front, air conditioning unit, radiator, carpet, storage cupboard.

## Bedroom Two

15'8 x 10'2 (4.78m x 3.10m)

Double glazed bay window to front, built in wardrobes, radiator, oak flooring.

## Bedroom Three

12'1 x 10'2 (3.68m x 3.10m)

Double glazed window to rear, oak flooring, radiator.

## Bedroom Four

9'4 x 6'11 (2.84m x 2.11m)

Double glazed window to front, radiator, oak flooring.

## Bathroom

8'5 x 8'3 (2.57m x 2.51m)

Double glazed window to rear, panelled bath, vanity wash hand basin, low level WC, heated towel rail, tiled walls and flooring.

## Shower Room

6'4 x 6'3 (1.93m x 1.91m)

Double glazed window to rear, low level WC, vanity wash hand basin, shower cubicle, tiled flooring.

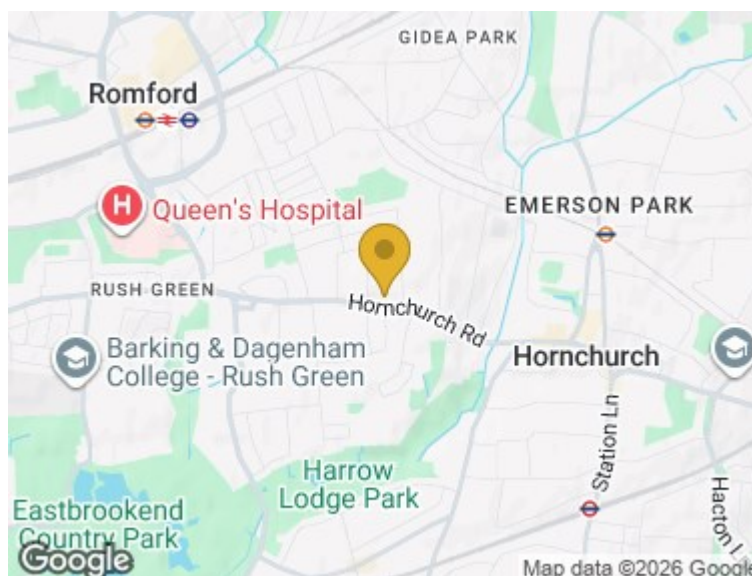
## Garden

70' (21.34m)

Part paved and part laid to lawn, side pedestrian access, garage with power.

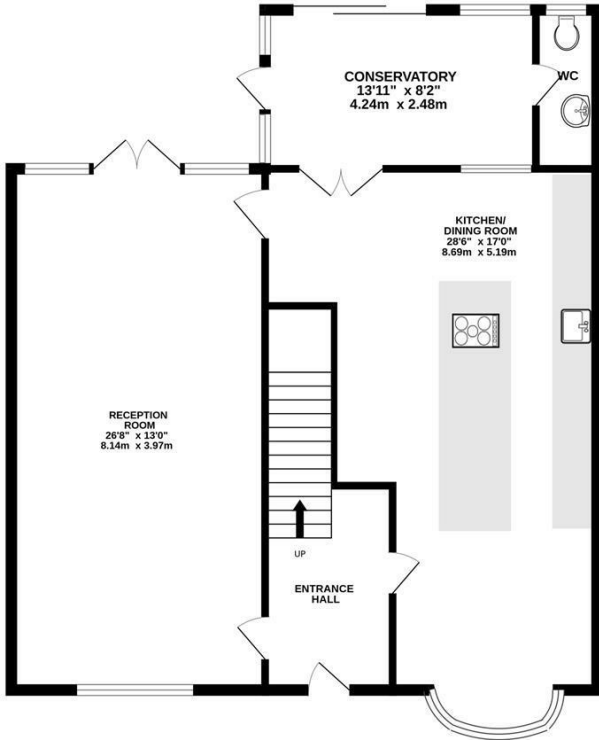
## Parking

Paved driveway for three cars.

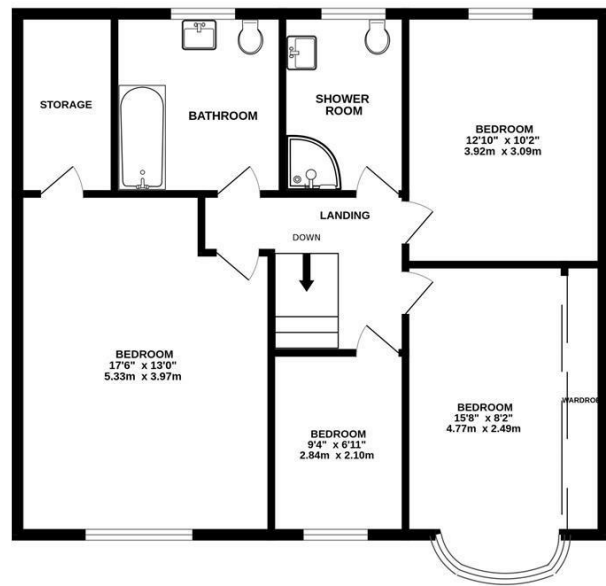




GROUND FLOOR  
954 sq.ft. (88.6 sq.m.) approx.



1ST FLOOR  
815 sq.ft. (75.7 sq.m.) approx.



TOTAL FLOOR AREA : 1769 sq.ft. (164.4 sq.m.) approx.

Whilst every attempt has been made to ensure the accuracy of the floorplan contained here, measurements of doors, windows, rooms and any other items are approximate and no responsibility is taken for any error, omission or mis-statement. This plan is for illustrative purposes only and should be used as such by any prospective purchaser. The services, systems and appliances shown have not been tested and no guarantee as to their operability or efficiency can be given.  
Made with Metropix ©2026

These particulars, whilst believed to be accurate are set out as a general outline only for guidance and do not constitute any part of an offer or contract. Intending purchasers should not rely on them as statements of representation of fact, but must satisfy themselves by inspection or otherwise as to their accuracy. No person in this firm's employment has the authority to make or give any representation or warranty in respect of the property.

Material Information:  
Council Tax Band: E  
Tenure: Freehold

