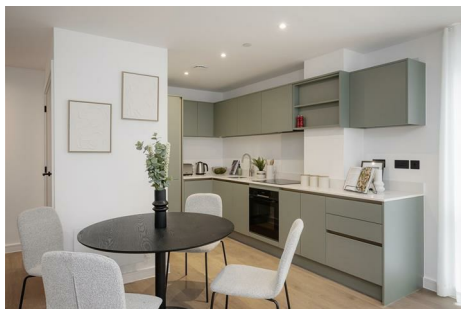




ASPIRE

— TO MOVE —



The Willows, Windsor Bridge Road, Bath, BA2

Welcome to The Willows a brand new riverside development close to the city featuring a selection of high specification 1, 2 and 3 bedroom apartments.

The communal areas offer co-working space, shared lounge, bike store, cinema room and private kitchen and dining room to be booked as well as your very own concierge service.

All apartments can be offered furnished and with parking by negotiation.

£1,495 PCM

The Willows, Windsor Bridge Road, Bath, BA2

- New one bedroom apartment
- Available now
- Option for furnished, additional charge
- Riverside location
- Communal areas including cinema room & co-working space
- Council tax band: Awaiting banding
- Concierge and parcel service
- Parking available, additional charge
- Holding deposit: £345

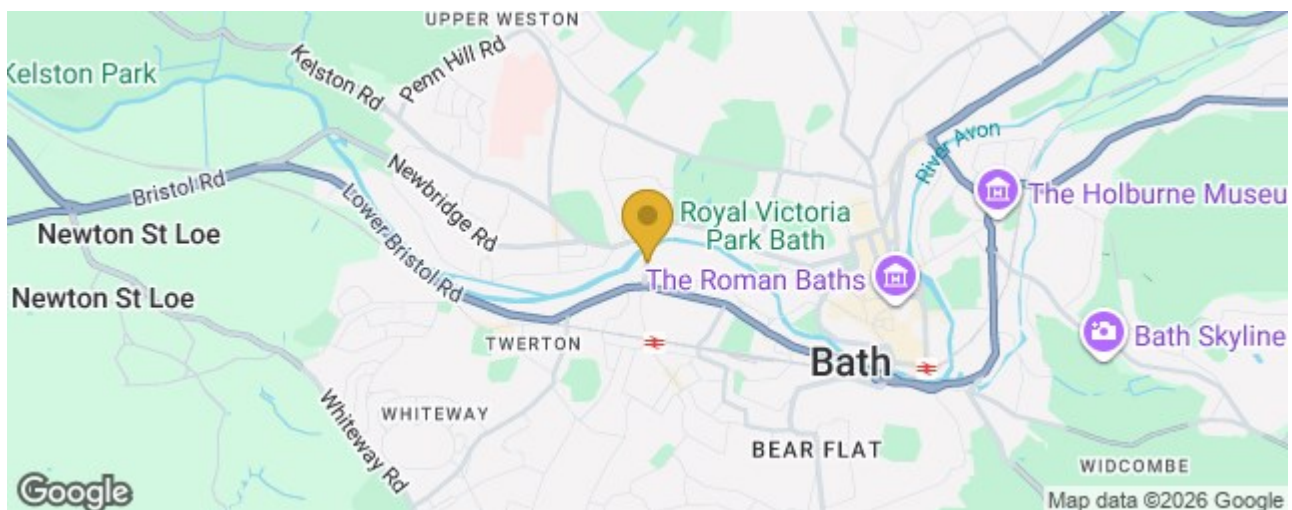
Video and physical viewings available. Welcome to The Willows an exceptional new development set on the banks of the River Avon, beside Windsor Bridge and just moments from Bath city centre. Offering beautifully finished one and two bedroom apartments, some with stunning river views, this is contemporary living at its finest.

Each home features designer handle-less kitchens with quartz worktops and integrated Bosch appliances, elegant porcelain marble bathrooms with brushed bronze fittings, oak-effect flooring throughout and built-in mirrored wardrobes. Fiber connectivity and video entry come as standard. Some apartments benefit from river views and outside space, perfect for a glass of wine on a sunny afternoon.

Residents enjoy exclusive on-site amenities including concierge and parcel storage, stylish co-working lounge with bar area, private dining room and cinema room, creating a true lifestyle development in a prime Bath location. Parking and furniture are also available by negotiation.

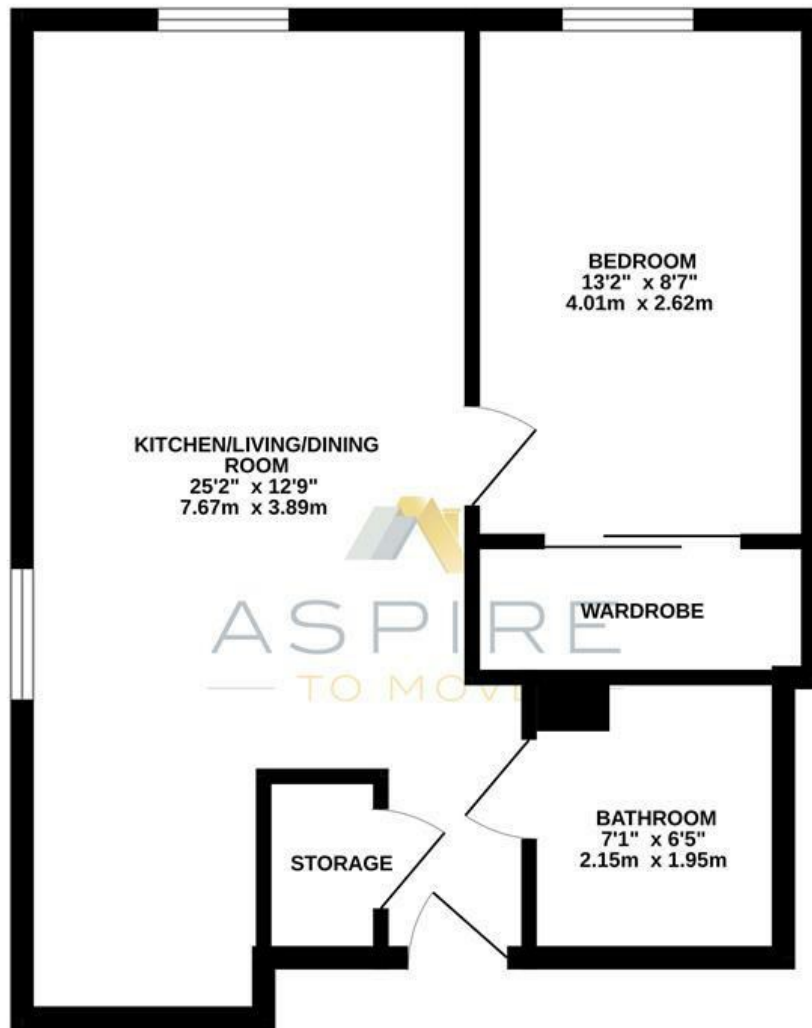
The development is located in a prominent position next to the River Avon and provides great access into Bath City centre. Local shops can be found on Upper Bristol Road including a Tesco Express, Restaurant and local cafe. More shops can be found in the popular high streets of Chelsea Road, 0.4 miles away, and Moorland Road, 0.6 miles away. Local bus stops can be found within 0.1 miles of the development and Oldfield Park train station is 0.3 miles away.

Council tax band: Awaiting banding





THIRD FLOOR
474 sq.ft. (44.0 sq.m.) approx.



THE WILLOWS, BATH, BA2

TOTAL FLOOR AREA : 474 sq.ft. (44.0 sq.m.) approx.

Whilst every attempt has been made to ensure the accuracy of the floorplan contained here, measurements of doors, windows, rooms and any other items are approximate and no responsibility is taken for any error, omission or mis-statement. This plan is for illustrative purposes only and should be used as such by any prospective purchaser. The services, systems and appliances shown have not been tested and no guarantee as to their operability or efficiency can be given.
Made with Metropix ©2026

These particulars, whilst believed to be accurate are set out as a general outline only for guidance and do not constitute any part of an offer or contract. Intending purchasers should not rely on them as statements of representation of fact, but must satisfy themselves by inspection or otherwise as to their accuracy. No person in this firm's employment has the authority to make or give any representation or warranty in respect of the property.

