



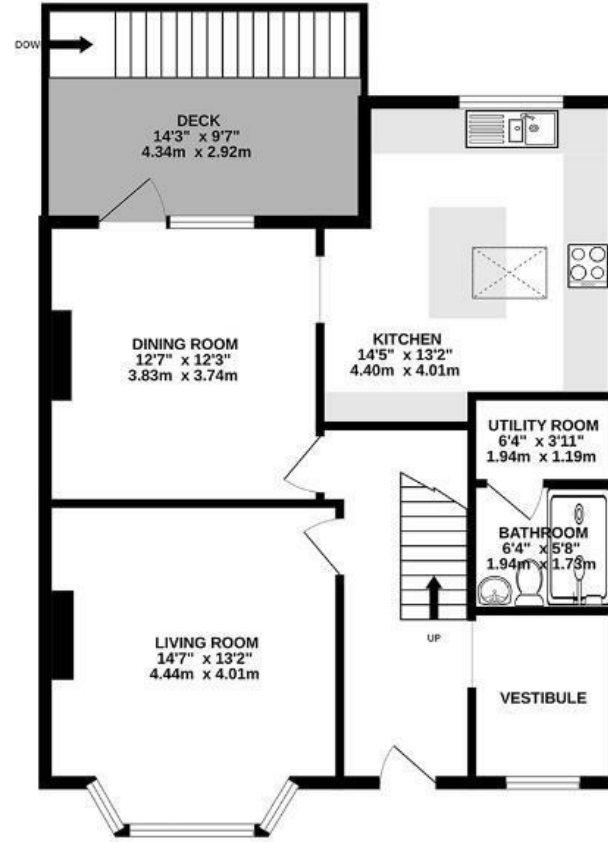
# Wingfield Road

## KNOWLE

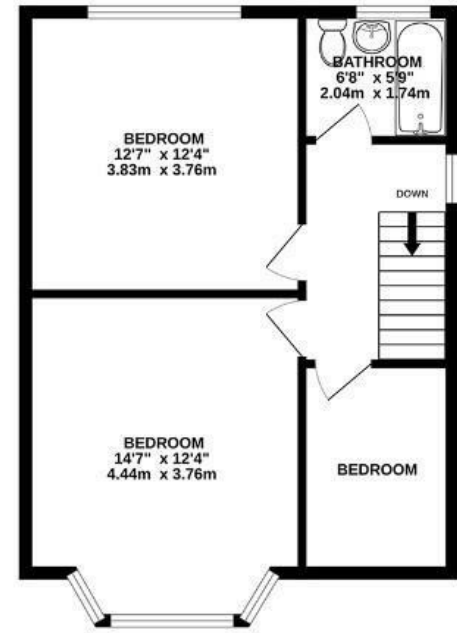
APPROXIMATE FLOOR AREA  
136 SQM / 1464 SQFT



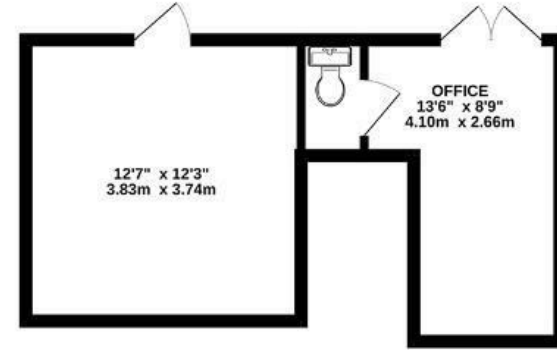
GROUND FLOOR



FIRST FLOOR



BASEMENT



Boardwalk

# Wingfield Road

, BRISTOL



£635,000



3 Bedrooms



BS3 5EH



3 Bathrooms

*"When we first moved in, we put a lot of care into transforming the house into a home - extending and reworking the space to make it open, sociable, and full of light. The kitchen and dining area has become the heart of the house, flowing out onto the balcony and into the garden, making it ideal for hosting friends or just enjoying a quiet drink watching the sunset and admiring the view over South Bristol. With Victoria Park just a short distance away, it's been perfect for morning walks, weekend strolls, and a quick escape for some fresh air without ever needing to travel far. At the same time, being able to walk into town for work so easily has made day-to-day life incredibly convenient."*

