



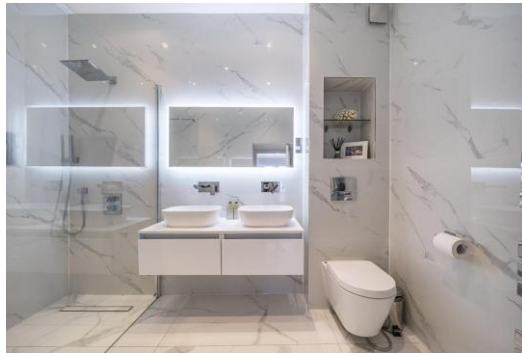
Belsize Park Gardens

Belsize Park, NW3

£11,500 per month
(£2,653.85 per week)

Short Let. A fabulous 3 bedroom maisonette over 2 floors on the lower ground and raised ground floors with its own front door, patio and a south facing garden in this excellent location walking distance to the shops and restaurants of Belsize Park.

CHESTERTONS



Belsize Park Gardens

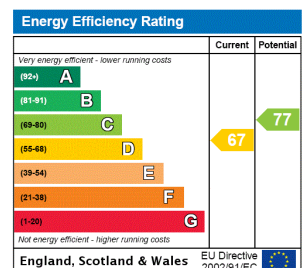
Belsize Park, NW3

- Short Let. A Fabulous Maisonette with Own Front Door
- 3 Bedrooms, 2 Bathrooms, Reception Kitchen
- Patio, South Facing Garden, Utility Room
- Excellent Location Walking Distance to the Shops and Restaurants of Belsize Park (Northern Line)



Short Let. A fabulous 3 bedroom maisonette over 2 floors on the lower ground and raised ground floors with its own front door, patio and a south facing garden. The property is situated in this excellent location walking distance to the shops and restaurants of Belsize Park (Northern Line). Accommodation comprises spacious reception room, semi open plan fully fitted kitchen, master bedroom with en-suite shower room, 2 further bedrooms, family bathroom, utility room.

Minimum Term: 1 months
Deposit Required: £10,615.38
Local Authority: London Borough Of Camden
Council Tax Band: G
EPC Rating: D
Furnished



Chestertons Hampstead Lettings

55-56 Hampstead High Street
 Hampstead
 London
 NW3 1QH
 hampsteadlettingsusers@chestertons.co.uk
 02077941125
 chestertons.co.uk

Additional tenant charges apply (fees apply to non-AST tenancies only)
 Tenancy Agreement Fee: £300
 References per Tenant/Guarantor: £60
 Inventory check (approx. £100 – £250 inc. VAT)
 chestertons.co.uk/property-to-rent/applicable-fees

Approximate Gross Internal Area

Lower Ground floor = 747 sq. ft. (69.4 sq. m.)

Raised Ground floor = 545 sq. ft. (50.6 sq. m.)

Mezzanine = 47 sq. ft. (4.4 sq. m.)

Total = 1339 sq. ft. (124.4 sq. m.)

