



Bainite Grove, £300,000

- No Onward Chain
- Brilliant location
- Filled with Natural Light
- Three Bedrooms
- Council Tax Band - D
- EPC Rating: B



3 2 1



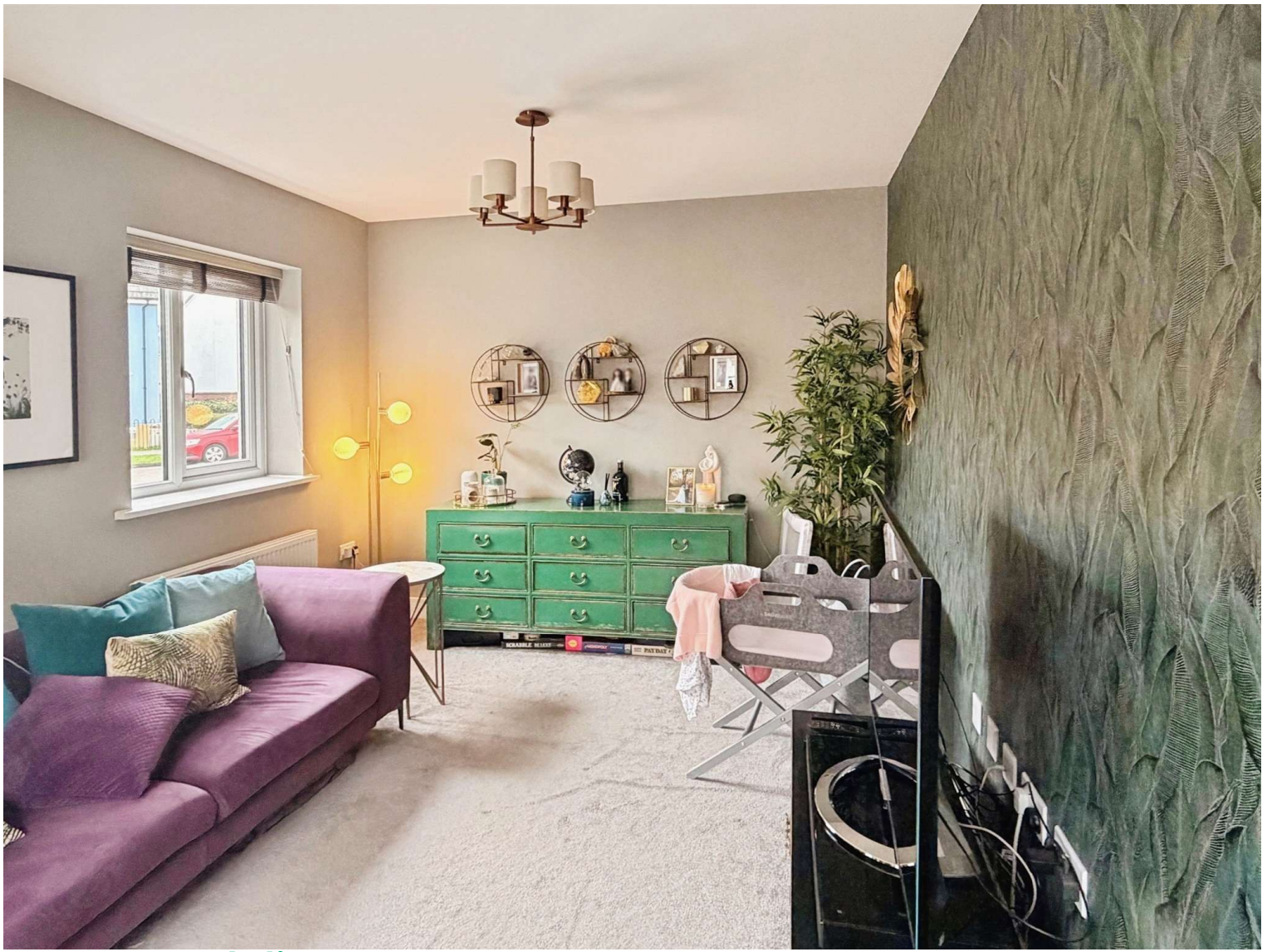
About the property

Welcome to this charming three-bedroom detached property that is currently up for sale! Nestled in a serene, peaceful neighbourhood, this delightful home is in close proximity to public transport links, local schools, amenities and green spaces. Nature lovers will adore the nearby parks, whilst the strong local community is sure to make you feel right at home.

The house boasts one well-sized reception room that is flooded with natural light from the large windows, making it an inviting space for relaxation and entertainment. The property also comes with a modern kitchen equipped with top-notch appliances, and an ample dining space. The natural light pouring in adds a warm, inviting feel to this culinary haven.

The property offers three bedrooms, perfect for families, couples, or sharers. The master bedroom comes with an en-suite and built-in wardrobes, offering plenty of storage. The second bedroom is a double bedroom, also with built in storage. The third bedroom is a cosy single room allowing plenty of natural light in, perfect for a home office or child's room.

Outside, you will find a driveway, providing plenty of room for vehicles. The garden is a lovely feature too, offering a tranquil space for outdoor relaxation. Plus, the property comes with no onward chain, making the moving process that much smoother. Don't miss out on this fabulous opportunity!



Accommodation

Kitchen

16' 9" x 9' (5.11m x 2.74m)

Lounge

17' x 10' (5.18m x 3.05m)

Bedroom One

9' 9" x 9' 2" (2.97m x 2.79m)

Bedroom Two

10' 2" x 6' 8" (3.10m x 2.03m)

Bedroom Three

10' 3" x 10' (3.12m x 3.05m)

01633 221892

newport@peteralan.co.uk

Floorplan

Important Information

Note while we endeavour to make our sales details accurate and reliable, if there is any point which is of particular interest to you, please contact the office and we will be pleased to confirm the position for you. We have not personally tested any apparatus, equipment, fixtures, fittings or services and cannot verify they are in working order or fit for their purposes. Nothing in these particulars is intended to indicate that carpets or curtains, furnishings or fittings, electrical goods (whether wired or not). Gas fires or light fittings or any other fixtures not expressly included form part of the property offered for sale. This computer generated Floorplan, if applicable, is intended as a general guide to the layout and design of the property. It is not to scale and should not be relied upon for dimensions. Tenure: We cannot confirm the tenure of the property as we have not had access to the legal documents. The buyer is advised to obtain verification from their solicitor or surveyor.

Peter Alan Limited is registered in England and Wales under company number 2073153, Registered Office is Cumbria House, 16-20 Hockliffe Street, Leighton Buzzard, Bedfordshire, LU7 1GN. VAT Registration Number is 500 2481 05. For activities relating to regulated mortgages and non-investment insurance contracts, Peter Alan Limited is an appointed representative of Connells Limited which is authorised and regulated by the Financial Conduct Authority. Connells Limited's Financial Services Register number is 302221. Most buy-to-let

