

## Maple Gardens, Sowerby, YO7 3PY

Guide Price £395,000

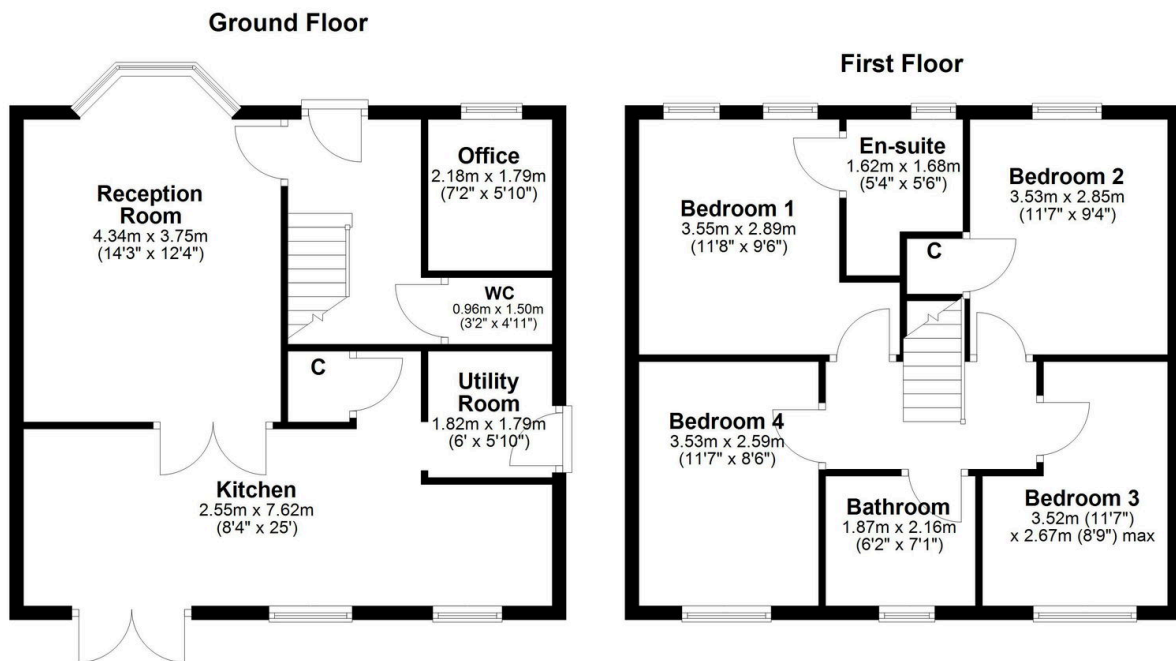
🛏️ 4 🚿 2 🚗 1



**The Yorkshire Property Agency** is delighted to introduce this fabulous four-bedroom family home located in a popular development in the North Yorkshire village of Sowerby, nr Thirsk. Boasting a contemporary finish and priced to sell, this property is unlikely to be on the market for long.

## Key Features

- Modern detached family-home
- Two bathrooms and ground-floor WC
- Stylish modern finish throughout
- Private garage
- A short walk or drive to the local amenities of Thirsk
- Four bedrooms
- Double-fronted
- Off-street parking
- Excellent commuter location
- Council tax band E



This floorplan is for illustrative purposes only and is not 100% to scale. Measurements of Rooms, Windows, Doors and any other items are an approximate and no responsibility is taken for any error, misstatement or omission. Items such as bathroom suites, or kitchens are representatives only any may not look like the real item. Made by Daniel Kitching Photography