



Holland Road, NW10

£800,000

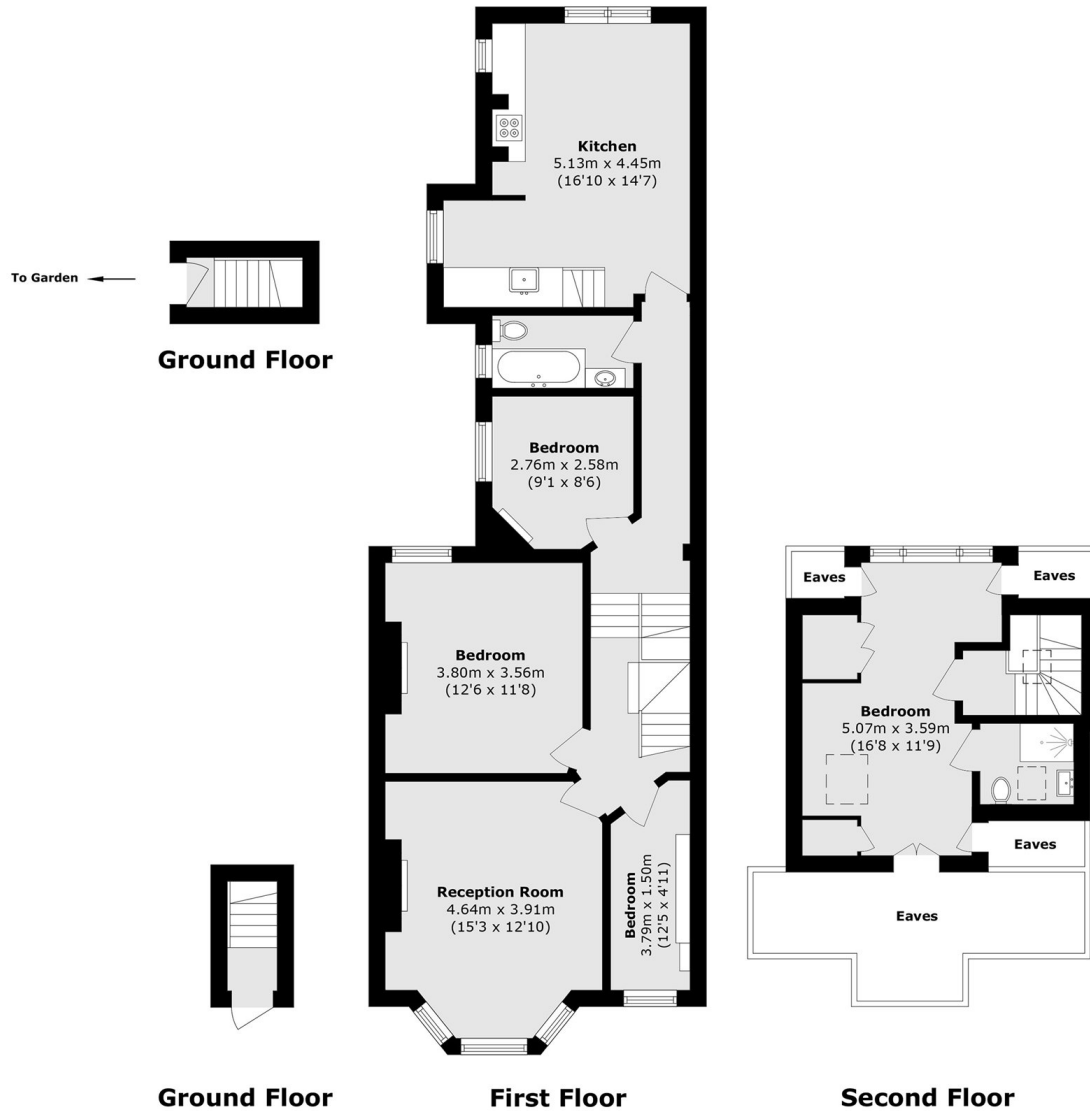
A beautifully presented four bedroom flat arranged over two floors of a Victorian conversion, with a south-facing private garden. The property benefits from having a reception room flooded with natural occupying the bay window, a separate eat-in kitchen to the rear, and is available chain-free.

Holland Road is a quiet residential street located close to King Edward VII Park, as well as the shops, cafés and amenities of College Road and Chamberlayne Road. Transport links are excellent, with Kensal Green (Bakerloo line) and Willesden Junction (Bakerloo line and Overground) both within easy reach.

Features

- Four Bedrooms
- Two Bathrooms
- Eat-In Kitchen
- Private Garden
- Chain-Free
- Close To Local Amenities

Holland Road, London, NW10



Total area (approx.): 109.2 sq. m (1174.5 sq. ft)
(Excluding Eaves)