



**Price**

**£59,375**

**Leasehold**

2x  1x  1x 

**Plot 2, Thatch Barn  
Road, Headcorn,  
Ashford, Kent, TN27**

**cubitt&west**  
Helping you move forwards

## Main features

- First-floor maisonette
- Two spacious double bedrooms
- Large living/dining room
- Semi-separate, well-designed kitchen
- Modern family bathroom
- Separate utility area
- Parking Court (unallocated)

## Accommodation

### FIRST FLOOR

Entrance Hall

Utility Area : 5'3 x 2'9 (1.60m x 0.84m)

Bedroom 1 : 13'0 x 12'2 (3.97m x 3.71m)

Bathroom : 7'1 x 6'7 (2.16m x 2.01m)

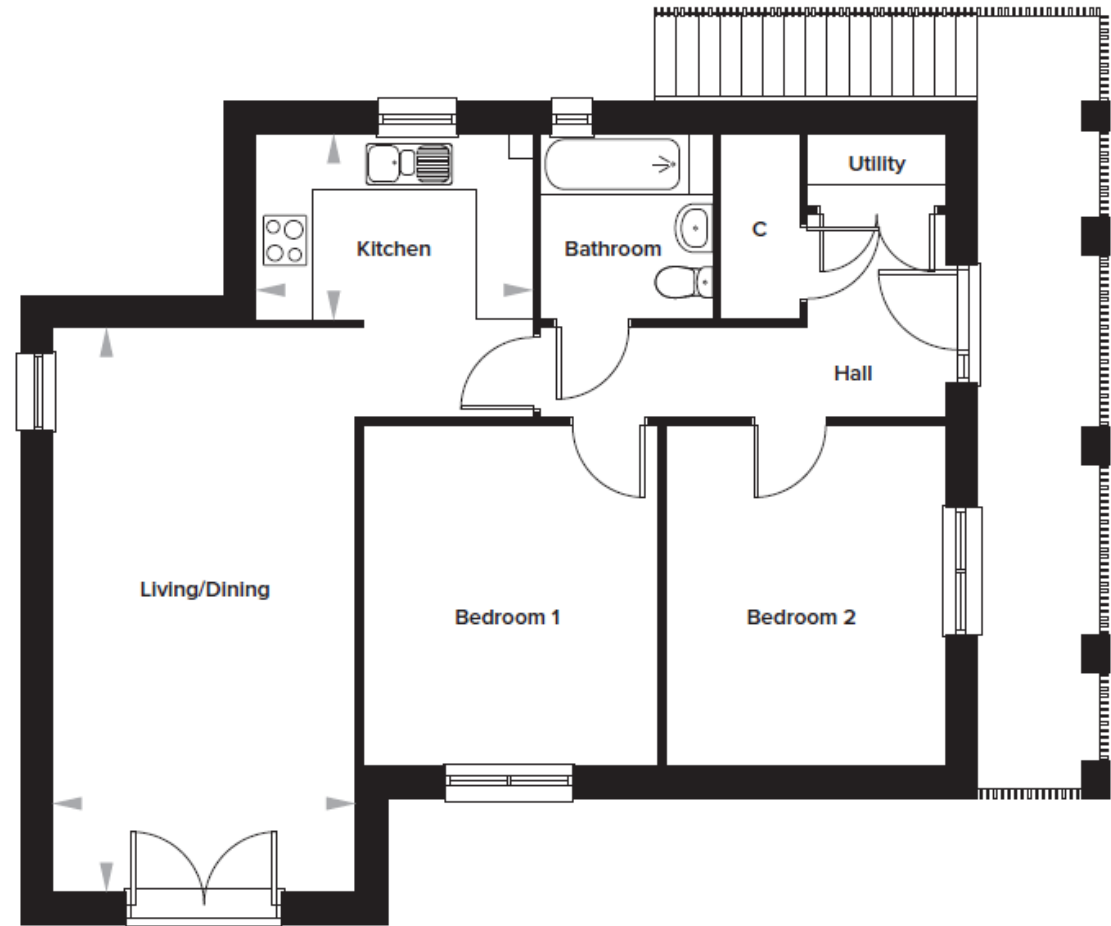
Bedroom 2 : 13'0 x 10'8 (3.97m x 3.25m)

Kitchen : 10'7 x 7'1 (3.23m x 2.16m)

Living/ Dining : 21'6 x 11'7 (6.56m x 3.53m)

### OUTSIDE

Parking Court



**Call Shared Ownership - 01403 602681 ■ [cubittandwest.co.uk](http://cubittandwest.co.uk)**

■ If buying to let, the energy rating will need to be improved to at least 'E' rating before you can let the property

■ Appliances & services are untested, dimensions are approximate and floor plans are not to scale

■ Legal advice should be taken to verify fixtures/fittings, planning, alterations and/or lease details



2430023Z/20251118/KCE/KCE