



St. Luke's Avenue, SW4

£2,500 Per week

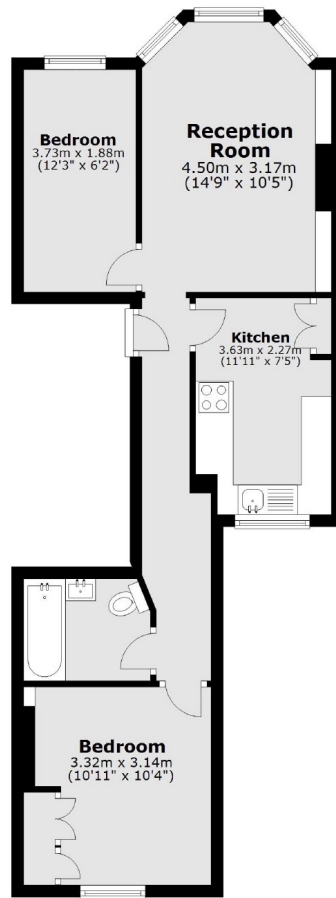
A first floor flat in the heart of Clapham. Recently decorated, offering a large double bedroom, a second smaller bedroom, ideal for a study/office, a reception room, separate kitchen, bathroom and neutral decor throughout. Ideal for a couple looking for extra space.

Located on just off of Clapham High Street, with its array of shops, restaurants, bars and transport links via Clapham Common and Clapham North tube stations.

Features

- One Double Bedroom
- Prime Location
- Separate Reception Room
- Recently Decorated
- First Floor Flat
- Close To Common

St. Luke's Avenue, London, SW4



Total area: approx. 50.1 sq. metres (538.9 sq. feet)