



BEST
ESTATE AGENT GUIDE
AWARDS 2026
TOP 500
SALES

AWARDED FOR
MARKETING | SERVICE | RESULTS

104 Penrose Avenue, Watford
£535,000





104 Penrose Avenue

Watford

NESTLED ON THE SOUGHT-AFTER PENROSE AVENUE IN WATFORD, WD19, THIS DELIGHTFUL FREEHOLD BUNGALOW OFFERS THE PERFECT BLEND OF MODERN COMFORT AND STYLISH LIVING, WITH THE ADDED BENEFIT OF NO UPPER CHAIN!

Boasting attractive curb appeal and lovely décor throughout, the property is presented in lovely condition and promises a welcoming atmosphere from the moment you arrive.

Council Tax band: E

Tenure: Freehold

EPC Energy Efficiency Rating: D

EPC Environmental Impact Rating: D

- TWO RECEPTION ROOMS
- NO UPPER CHAIN
- SOUTH FACING GARDEN
- MODERN KITCHEN
- GAS CENTRAL HEATING
- UPVC DOUBLE GLAZING





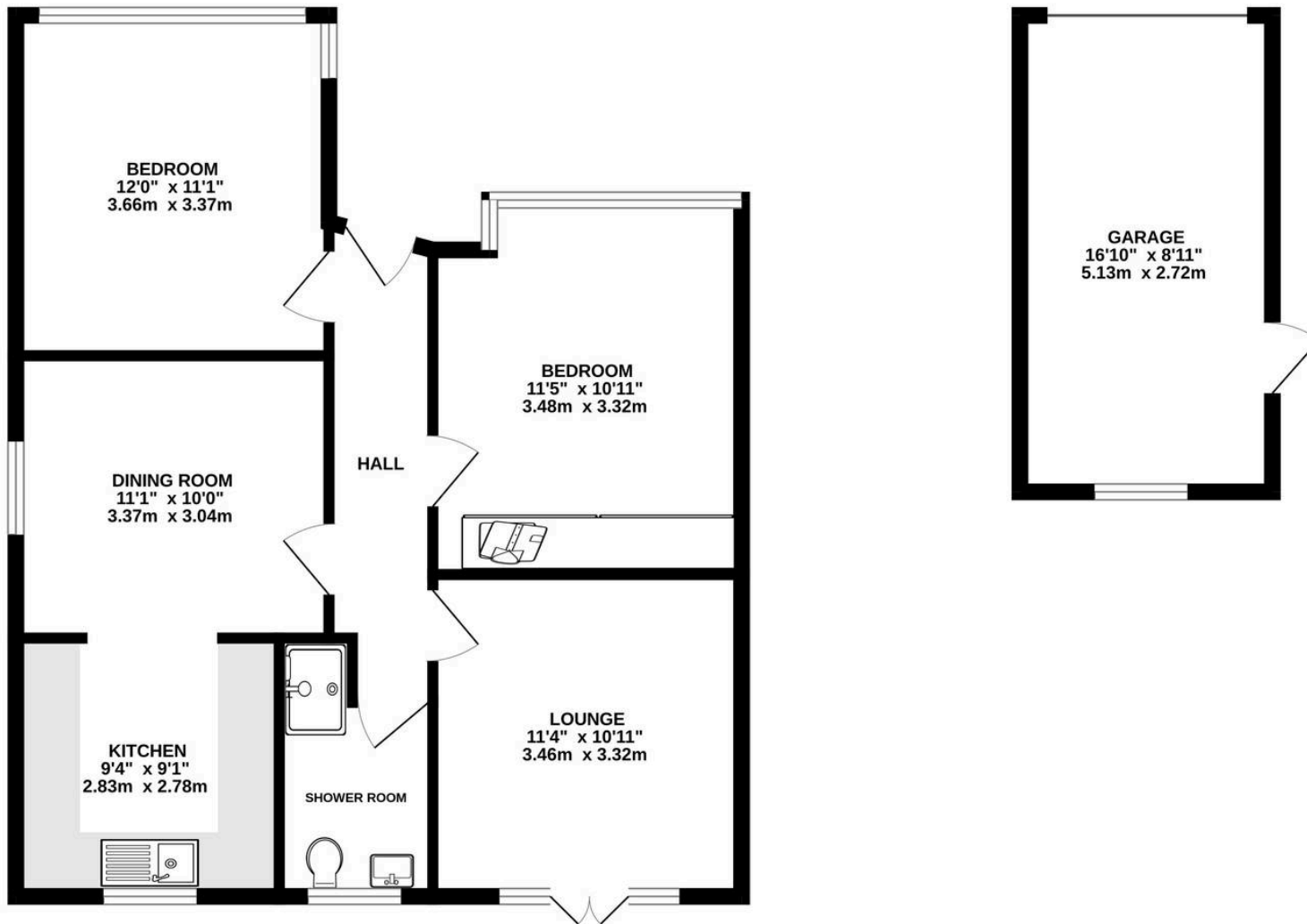






GROUND FLOOR
694 sq.ft. (64.5 sq.m.) approx.

OUTSIDE
150 sq.ft. (13.9 sq.m.) approx.




TOTAL FLOOR AREA : 844 sq.ft. (78.4 sq.m.) approx.

Whilst every attempt has been made to ensure the accuracy of the floorplan contained here, measurements of doors, windows, rooms and any other items are approximate and no responsibility is taken for any error, omission or mis-statement. This plan is for illustrative purposes only and should be used as such by any prospective purchaser. The services, systems and appliances shown have not been tested and no guarantee as to their operability or efficiency can be given.
Made with Metropix ©2026



Energy Efficiency Rating

	Current	Potential
<i>Very energy efficient - lower running costs</i>		
(92+) A		
(81-91) B		80
(69-80) C		
(55-68) D	65	
(39-54) E		
(21-38) F		
(1-20) G		
<i>Not energy efficient - higher running costs</i>		
England, Scotland & Wales	EU Directive 2002/91/EC	

Fairfield – Oxhey

1 Station Approach, Watford – WD19 7DT

020 8428 0540 • rob@fairfieldstates.co.uk • fairfieldstates.co.uk/

We have prepared these particulars as a general guide of the property and they are not intended to constitute part of an offer or contract. We have not carried out a detailed survey of the property and we have not tested any apparatus, fixtures, fittings, or services. All measurements and floorplans are approximate, and photographs are for guidance only. These should not be relied upon for the purchase of carpets or any other fixtures or fittings. Lease details, service