



Wood Vale, SE23

£400,000

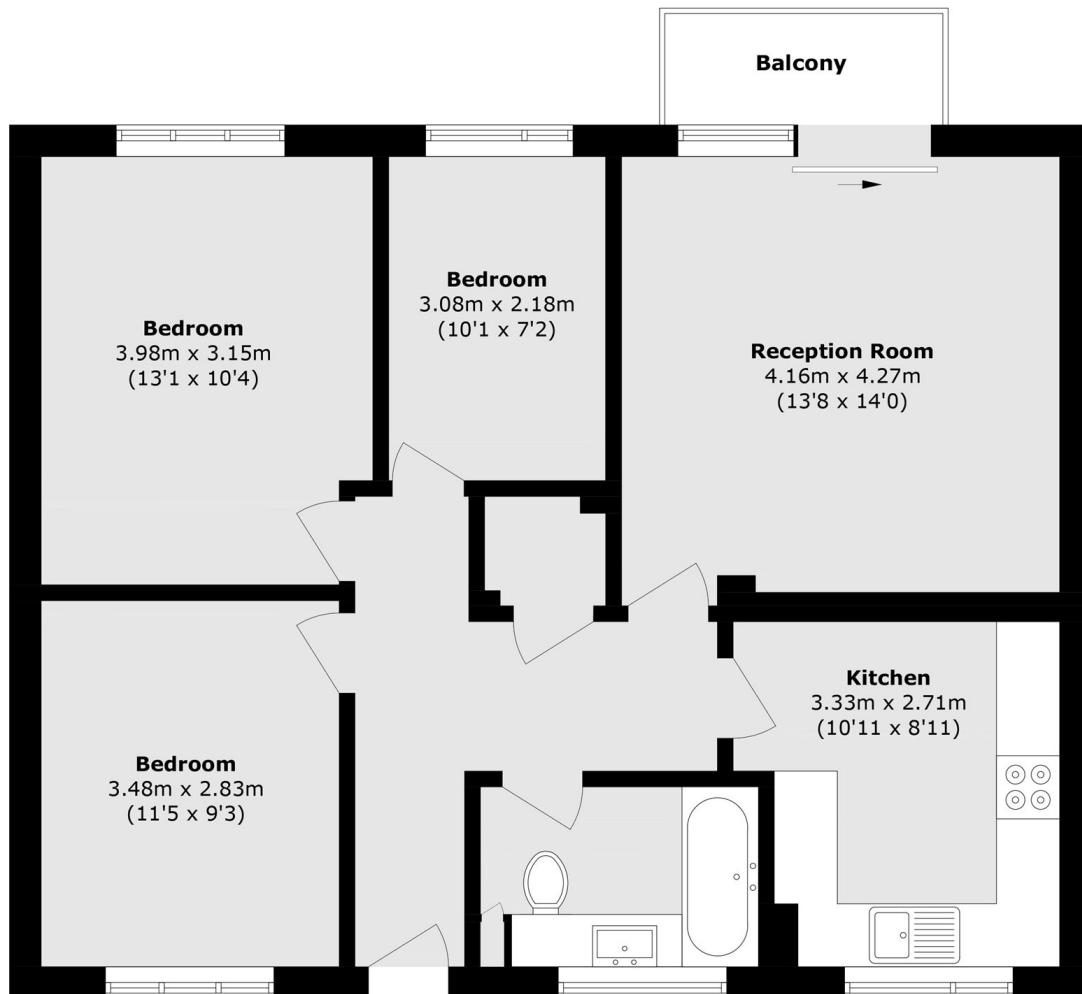
This spacious second floor flat offers over 800 sq ft of accommodation with three bedrooms, a private garden and balcony, off street parking and a convenient location close to local stations.

Wood Vale is a sought after residential area ideally positioned between Forest Hill, Dulwich and Sydenham and benefits from excellent transport links. Nearby Forest Hill and Honor Oak Park stations offer London Overground and National Rail services. The area is well served by outstanding green spaces including Horniman Gardens, Dulwich Woods and Sydenham Hill Wood as well as a strong selection of well regarded local schools. Forest Hill and East Dulwich also provide a wide range of independent cafés, restaurants and pubs.

Features

Second Floor Flat
Three Bedrooms
Private Garden & Balcony
Off Street Parking
Over 800+ sqft
Close To Stations

Wood Vale, London, SE23



Total area (approx.): 74.4 sq. m (800.8 sq. ft)

Balcony area (approx.): 2.8 sq. m (30.1 sq. ft)