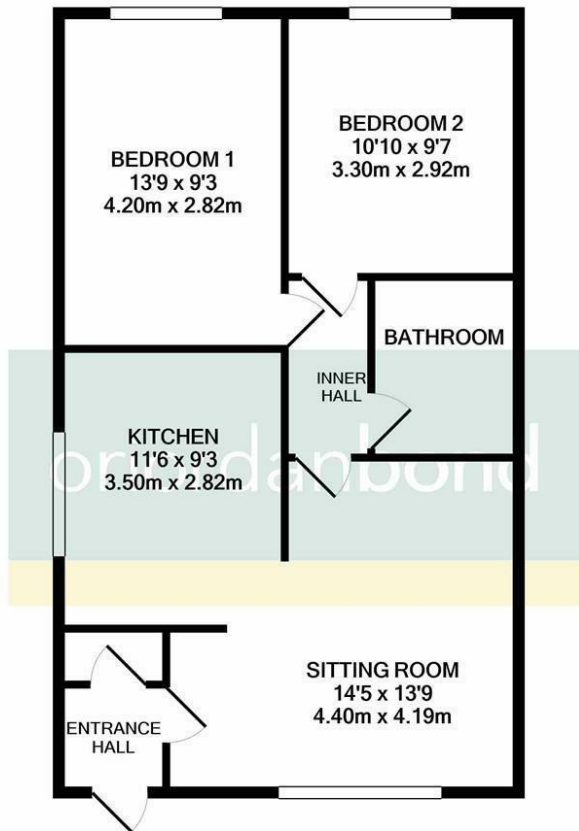




# Bective View, Bective Road

Kingsthorpe, Northampton

oriordanbond  
SALES & LETTINGS



TOTAL APPROX. FLOOR AREA 624 SQ.FT. (58.0 SQ.M.)

Whilst every attempt has been made to ensure the accuracy of the floor plan contained here, measurements of doors, windows, rooms and any other items are approximate and no responsibility is taken for any error, omission, or mis-statement. This plan is for illustrative purposes only and should be used as such by any prospective purchaser. The services, systems and appliances shown have not been tested and no guarantee as to their operability or efficiency can be given  
Made with Metropix ©2020

## Bective View, Bective Road

Kingsthorpe

NN2 7TE

PRICE £145,000

**INVESTOR PURCHASE ONLY** - A modern two bedroom ground floor maisonette offered to the market with tenants currently in situ, currently paying £875 pcm. The property is located in the heart of Kingsthorpe and is within easy access to local amenities, schools and a short drive to Northampton train station.

Accommodation comprises entrance hall, large sitting/dining room, fitted kitchen, two double bedrooms and a three-piece bathroom. Benefits include uPVC double glazing, gas radiator heating and parking for two cars. (B/624/-)

Leasehold Information: Lease Remaining - 900 years (as of 2026) / Ground Rent & Service Charge - £480 per annum

### Additional information

- Council Tax Band: B
- Energy Efficiency Rating: C

### Viewing

Viewing strictly by appointment – details below

### Disclaimer

O'Riordan Bond Estate Agents Limited has not tested apparatus, equipment, fittings or services and so cannot verify they are in working order. The buyer is advised to obtain verification from their solicitor or surveyor.

O'Riordan Bond Kingsthorpe Sales

01604 722007

kingsthorpe@oriordanbond.co.uk

