

Gledhow Gardens, SW5

£825 Per week

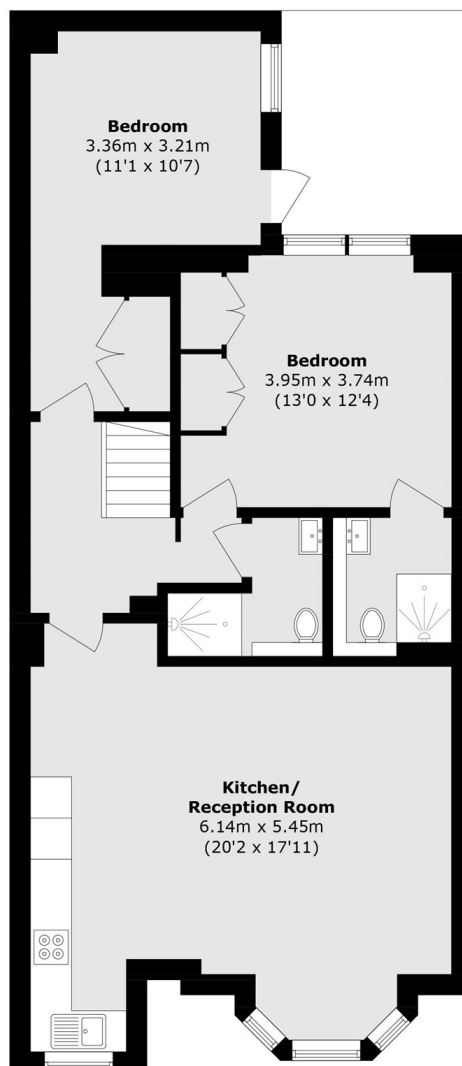
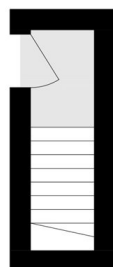
A newly refurbished two bedrooms apartment set within an attractive building in South Kensington, featuring spacious rooms, a private outside space, and access to communal gardens.

Gledhow Gardens is situated between Old Brompton Road and Wetherby Gardens. A range of local shops is located on Old Brompton Road at the end of Gledhow Gardens. Gloucester Road Underground station is within one mile.

Features

- Two Bedrooms
- Two Bathrooms
- Wood Floors
- Private Outside Space
- Communal Gardens
- Excellent Location

Gledhow Gardens, London, SW5



Ground Floor

Lower Ground Floor

Total area (approx.): 81.5 sq. m (877.3 sq. ft)