



Tower Bridge Road

London, SE1

Asking Price £425,000

Well presented two bedroom apartment on the first floor of a period building. Features an open plan kitchen and living area, bathroom, two double bedrooms and a private terrace. Just moments from Bermondsey Street and London Bridge.

CHESTERTONS



Tower Bridge Road

London, SE1

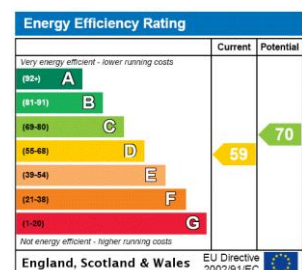
- Two Bedrooms
- One Bathroom
- Terrace
- Open Plan Kitchen
- Walk-Up (No lift)
- Close to Bermondsey Street
- Close to London Bridge Station



This two bedroom apartment is in a vibrant location just moments from the very popular Bermondsey Street and Maltby Street market. There are many local shops, restaurants, cafes and a Sainsbury's just moments away.

Transport links at the newly expanded London Bridge Station include many National Rail connections as well as Jubilee and Northern line tubes which give quick and easy access to Canary Wharf, The City, and West End.

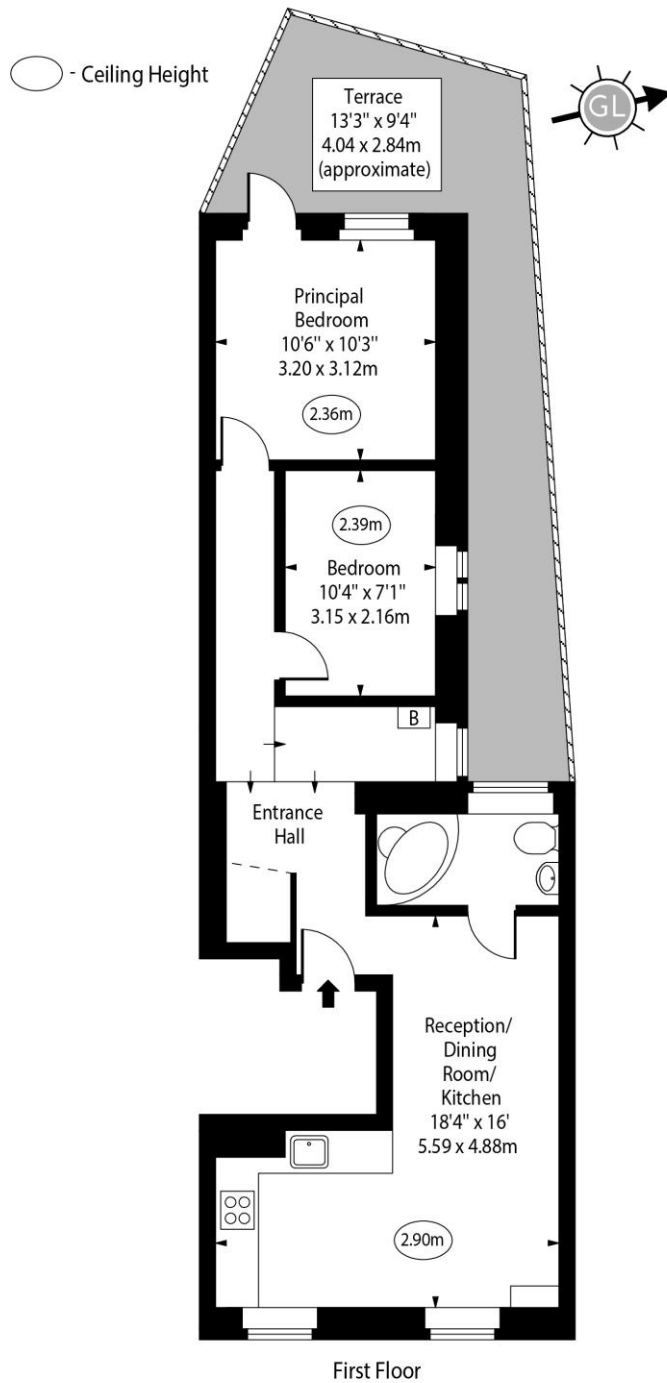
Tenure: Leasehold 108 years 5 months
Service Charge: £900
Ground Rent: £200
Local Authority: Southwark Council
Council Tax Band: C



Chestertons Tower Bridge Sales

220 Tower Bridge Road
 Tower Bridge
 London
 SE1 2UP
 towerbridge@chestertons.co.uk
 020 7357 7999
 chestertons.co.uk

Tower Bridge Road, SE1



Approx Gross Internal Area 570 Sq Ft - 52.95 Sq M

Every attempt has been made to ensure the accuracy of the floor plan shown. However, all measurements, fixtures, fittings, and data shown are approximate interpretations and for illustrative purposes only. Measured according to the RICS. Not To Scale.

www.goldlens.co.uk

Ref. No. 030527M

