



# WILLIAM HUNT MANSIONS, SW13

£1,250,000

Two Bedrooms  
First Floor  
River Views  
Modern  
Gated Development  
Communal Gardens

@marshandparsons  
marshandparsons.co.uk

MARSH &  
PARSONS



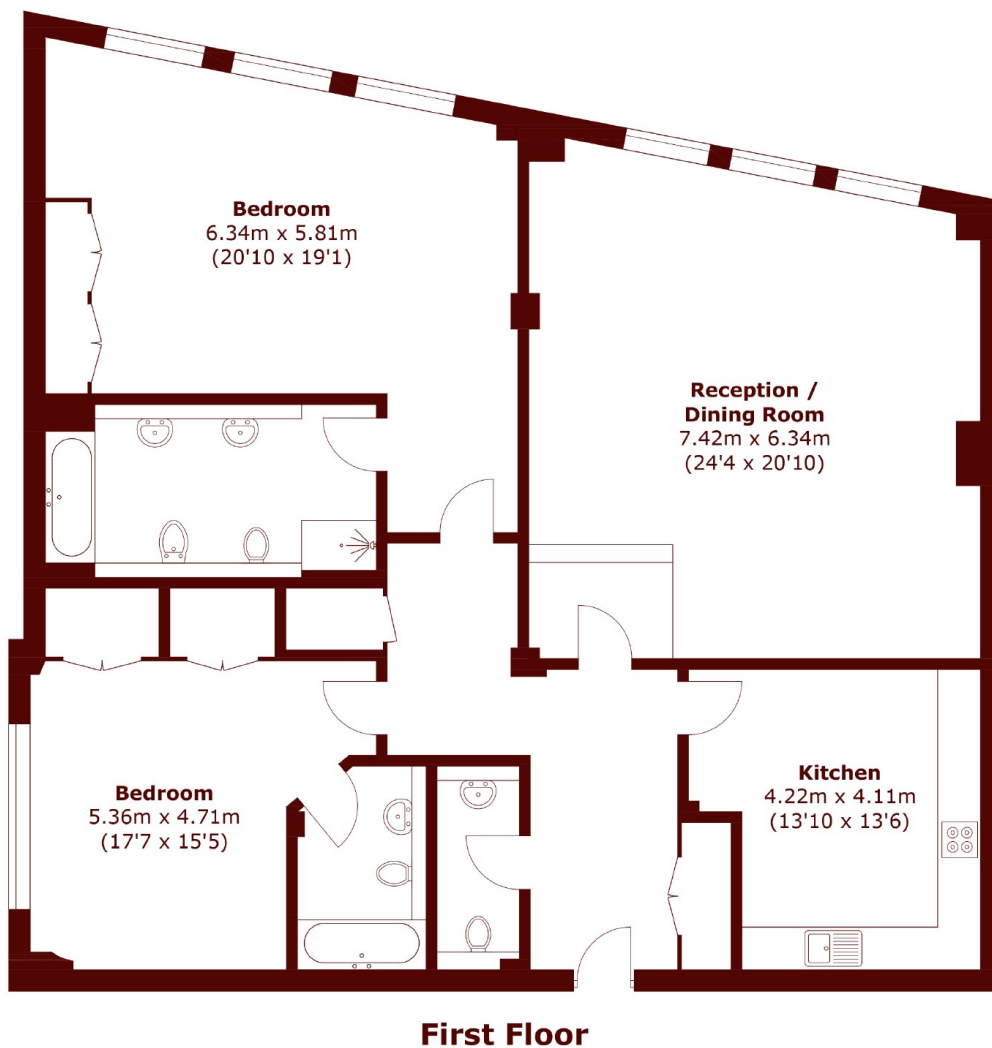
# ABOUT THE PROPERTY

A beautifully presented corner apartment located measuring at 156.3 square metres / 1682 square foot. On the first floor of this iconic riverside depository building in the exclusive Harrods Village, Barnes. Situated on the same level as the communal garden, this spacious home features high ceilings, stunning river views from both the reception room and the principal bedroom, and benefits from lift access and an allocated parking space.

Harrods Village is a prestigious gated development on the Thames in Barnes, featuring 24-hour concierge, landscaped gardens, direct towpath access, and a newly upgraded gym, pool, and sauna. Conveniently located near Hammersmith Station, Castelnau amenities, and



# STEP INSIDE WILLIAM HUNT MANSIONS



Total area (approx.): 156.3 sq. m (1,682.4 sq. ft)

**Barnes & East Sheen**  
020 8563 8333

Energy Rating: C We aim to make our particulars both accurate and reliable. However, they are not guaranteed; nor do they form part of an offer or contract. If you require clarification on any points then please contact us, especially if you're traveling some distance to view. Please note that appliances and heating systems have not been tested and therefore no warranties can be given as to their good working order

**MARSH &  
PARSONS**