



Ashton Road, BIRMINGHAM

burchell  
edwards



## Property Description

BEAUTIFUL!!! GREAT FAMILY HOME! This Three Bedroom property is situated on a popular road in Yardley! Having three good size bedrooms as well as great living space on the ground floor this will not be around long! Please call now to arrange your viewing! 01217421725

## Entrance Hallway

Double glazed window to front elevation and central heating radiator.

## Lounge

Double glazed bay window to front elevation, central heating radiator, gas fire, under stairs storage cupboard.

## Kitchen

Window to rear elevation, a range of wall and base units with work surface over incorporating a sink with drainer unit, electric oven, five ring gas hob, extractor, central heating radiator, tiled flooring.



## Landing

Loft access via hatch and carpet.

## Bedroom One

Double glazed window to front elevation, central heating radiator, carpet and cupboard.

## Bedroom Two

Double glazed window to rear elevation, central heating radiator and carpet.

## Bedroom Three

Double glazed window to rear elevation and central heating radiator.

## Bathroom

Double glazed window to side elevation, W.C, wash hand basin, bath with shower over, heated towel rail, extractor, fully tiled.

## Front Garden

Slabbed patio and steps to property.

## Rear Garden

Slabbed patio, outside tap and side access to frontage.

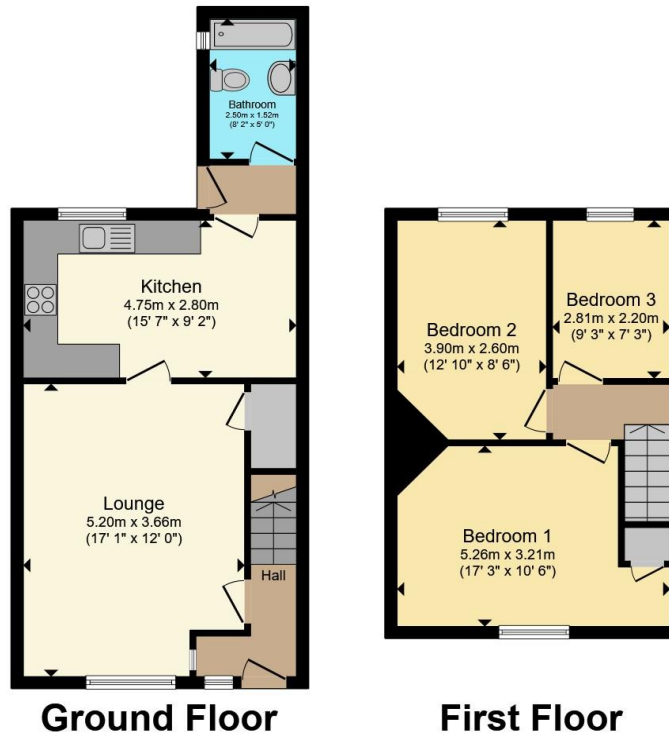
## Outbuilding

Double glazed windows to front and side elevations, power and lighting.









Total floor area 78.2 m<sup>2</sup> (841 sq.ft.) approx

This floor plan is for illustrative purposes only. It is not drawn to scale. Any measurements, floor areas (including any total floor area), openings and orientation are approximate. No details are guaranteed, they cannot be relied upon for any purpose and they do not form part of any agreement. No liability is taken for any error, omission or misstatement. A party must rely upon its own inspection(s). Powered by [www.propertybox.io](http://www.propertybox.io)



To view this property please contact Burchell Edwards on

**T 0121 742 1725**  
**E [sheldon@burchelledwards.co.uk](mailto:sheldon@burchelledwards.co.uk)**

2208 Coventry Road Sheldon  
 BIRMINGHAM B26 3JH

EPC Rating: D Council Tax  
 Band: A

Tenure: Freehold

**view this property online [burchelledwards.co.uk/Property/SHL211561](http://burchelledwards.co.uk/Property/SHL211561)**



1. MONEY LAUNDERING REGULATIONS Intending purchasers will be asked to produce identification documentation at a later stage and we would ask for your co-operation in order that there will be no delay in agreeing the sale. 2. These particulars do not constitute part or all of an offer or contract. 3. The measurements indicated are supplied for guidance only and as such must be considered incorrect. Potential buyers are advised to recheck measurements before committing to any expense. 4. We have not tested any apparatus, equipment, fixtures, fittings or services and it is in the buyers interest to check the working condition of any appliances.

Burchell Edwards is a trading name of Connells Residential which is registered in England and Wales under company number 1489613, Registered Office is Cumbria House, 16-20 Hockliffe Street, Leighton Buzzard, Bedfordshire, LU7 1GN. VAT Registration Number is 500 2481 05.

**See all our properties at [www.burchelledwards.co.uk](http://www.burchelledwards.co.uk) | [www.rightmove.co.uk](http://www.rightmove.co.uk) | [www.zoopla.co.uk](http://www.zoopla.co.uk)**

Property Ref: SHL211561 - 0006