



Pumping Station Road, W4

£2,500 Per calendar month

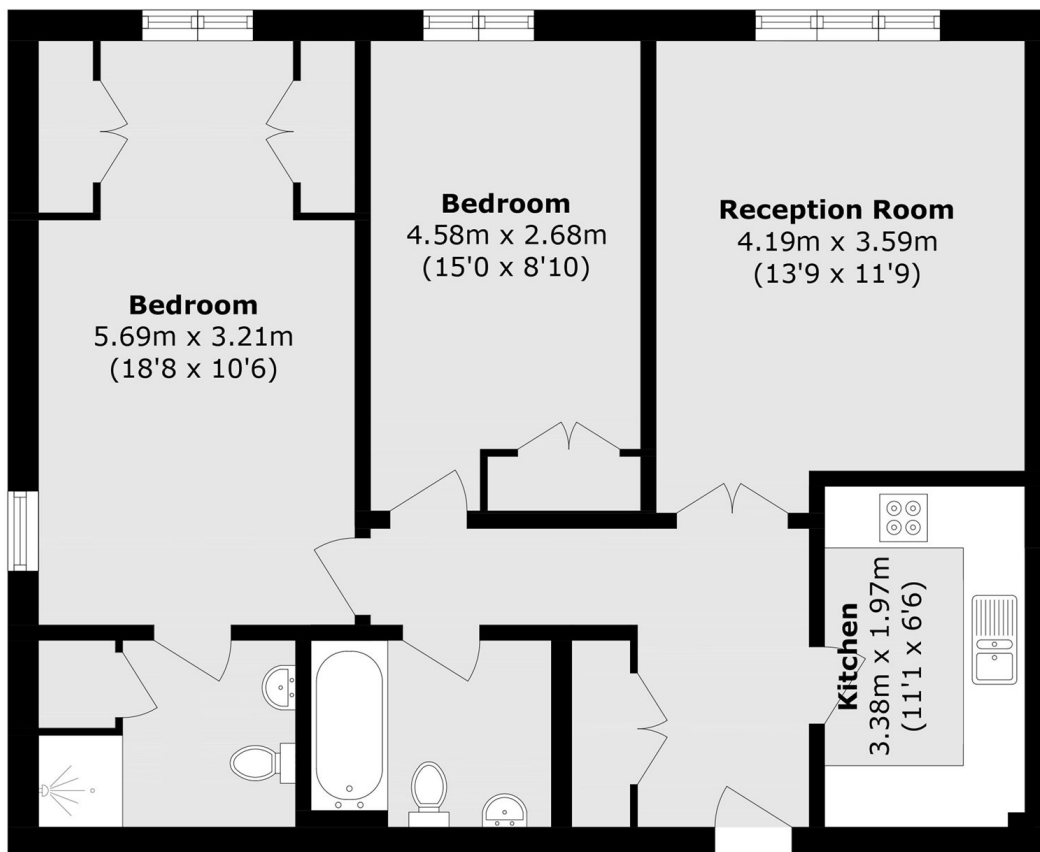
A two double bedroom apartment within a riverside development with a bright reception room with wood flooring, two newly renovated bathrooms, plenty of storage, a communal garden and allocated parking.

Set within a quiet residential development next to the River Thames and within walking distance to Chiswick mainline station, Turnham Green tube station, Dukes Meadows and Chiswick House and Gardens.

Features

- Two Bedrooms
- Two Bathrooms
- Plenty Of Storage
- Wood Flooring
- Allocated Parking
- Professionally Managed

Pumping Station Road, London, W4



Total area (approx.): 73.5 sq. m (791.1 sq. ft)