

1 Bedroom Maisonette for Sale - £140,000
Chepstow Close, Stratford upon Avon, CV37 9JF



KEY FEATURES

- Ideal for First Time Buyers • One Double Bedroom • Allocated Parking Space • First-Floor Maisonette • Walking Distance to Town Centre • Buy-to-Let Opportunity

Description

Situated in a popular residential location within a pleasant walk of Stratford-upon-Avon town centre, this first-floor maisonette is an excellent opportunity for first-time buyers and investors.

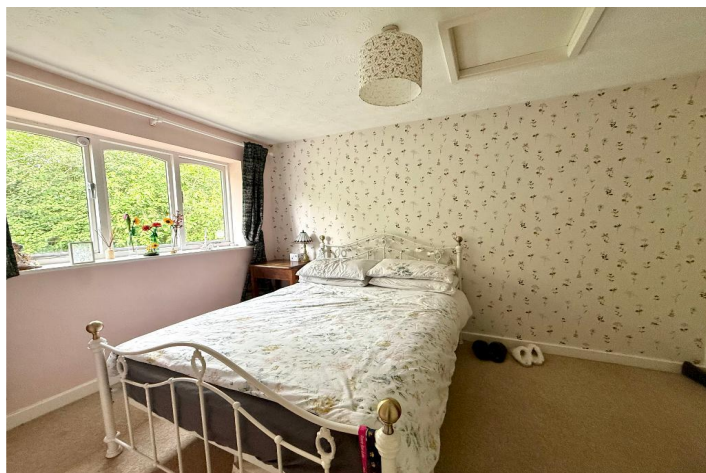
The property benefits from its own private front door, with stairs rising to the first-floor accommodation. Inside, there is a comfortable lounge, separate kitchen, double bedroom and bathroom, all offering well-balanced and practical living space.

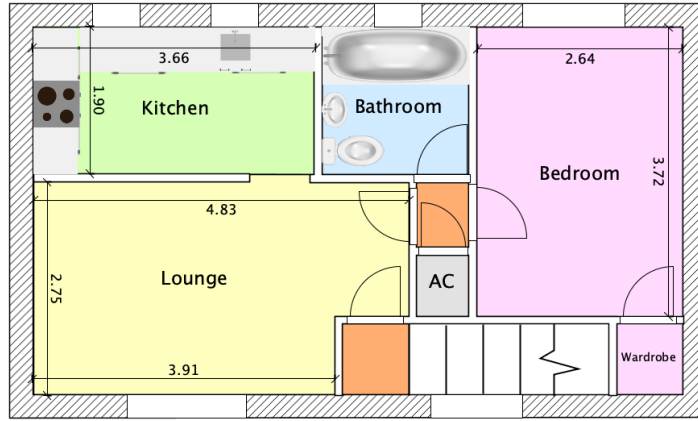
Outside, the property also benefits from an allocated parking space.

Conveniently positioned for the town centre, the property is within easy reach of Stratford's excellent range of shops, restaurants, cafés and theatres, as well as the picturesque River Avon and regular rail links from Stratford Parkway and Stratford-upon-Avon stations.

Additional Information

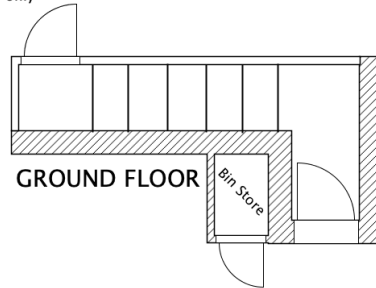
We are informed by the vendor that the property is leasehold with 88 years remaining on the lease (as at June 2026). We are advised that mains electricity, water and drainage are connected to the property. We are advised that there is an annual ground rent of £50 and an annual service charge of £1200. Council Tax Band B with Stratford on Avon District Council. All information should be checked by your solicitor prior to exchange of contracts.





FIRST FLOOR

Indicative floor plans for illustration purposes only



GROUND FLOOR

Score	Energy rating	Current	Potential
92+	A		
81-91	B		
69-80	C		74 C
55-68	D	62 D	
39-54	E		
21-38	F		
1-20	G		