



**Ditton Road, KT6**

**£1,575,000**

**Dexters**





## Ditton Road, KT6

Spacious five-bedroom Edwardian villa with Period charm and huge potential. Offering nearly 3,000 sq ft of living space, this substantial five-bedroom, two-bathroom property is brimming with character and opportunity.

Showcasing stunning original features, including magnificent stained glass windows, ceiling roses and coving, this home exudes timeless appeal and solid architectural bones, making it a perfect canvas for renovation or personalisation.

Set back from the road, the property benefits from generous off-street parking for multiple vehicles and a great plot with space also to the side.

To the rear, a large and secluded garden provides a private outdoor retreat, ideal for families or entertaining. A rare opportunity to create your dream home in a property full of charm, space, and potential.

Located in the prestigious Southborough Estate, Ditton Road is one of Surbiton's premier locations and is approximately a mile from Surbiton town centre with its fast trains into London. The road is peaceful yet close to everything you need including some of the areas most sought after schools.

### Features

- Edwardian Property
- Five Double Bedrooms
- Two Bathrooms
- Large Garden
- Southborough Estate
- Scope To Modernise







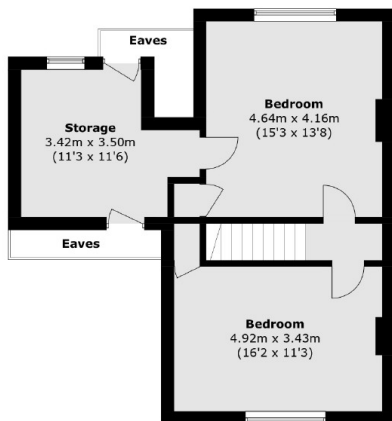




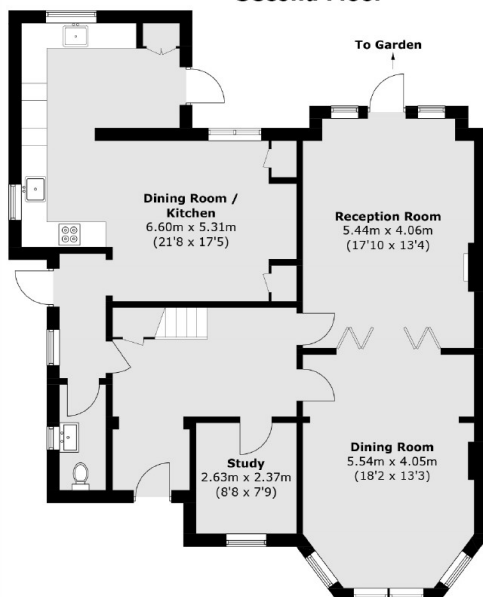




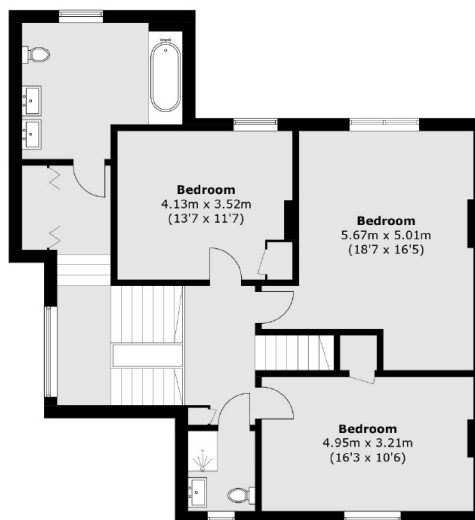
# Ditton Road, Surbiton, KT6



**Second Floor**



**Ground Floor**



**First Floor**

Total area (approx.): 255.3 sq. m (2,748 sq. ft)  
(Excluding Eaves)