



**Premier
Properties**
Perth

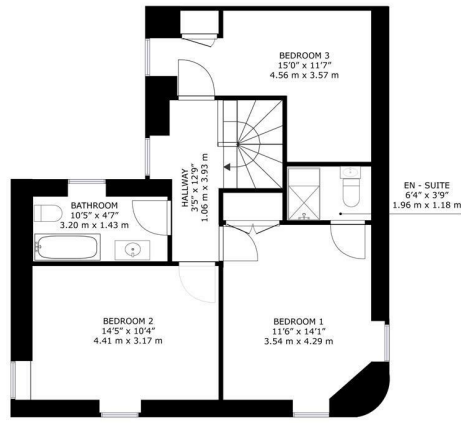
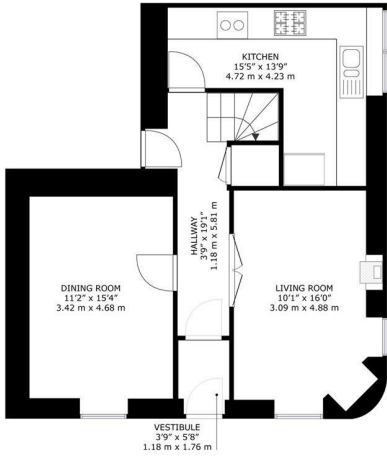


6 Church Road, Perth, PH1 3PG
Offers Over £245,000

 4  2  1  E



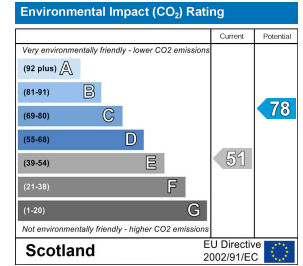
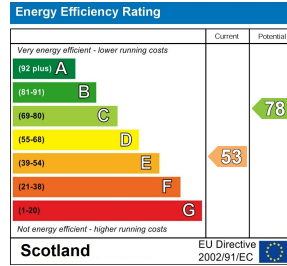
- 4 bedroom house
- Lounge with log burning stove
- Principal bedroom with en suite
- Gas central heating
- Double glazed windows
- Off-street parking
- Fully enclosed garden
- Viewing recommended



6 Church Road, Methven, PH1 3PG

GROSS INTERNAL AREA
GROUND FLOOR : 717 sq. ft./66.8 m², FIRST FLOOR : 688 sq. ft./63.9 m²
TOTAL : 1405 sq. ft./130.5 m²

SIZES AND DIMENSIONS ARE APPROXIMATE, ACTUAL MAY VARY.



These particulars, whilst believed to be accurate are set out as a general outline only for guidance and do not constitute any part of an offer or contract. Intending purchasers should not rely on them as statements of representation of fact, but must satisfy themselves by inspection or otherwise as to their accuracy. No person in this firm's employment has the authority to make or give any representation or warranty in respect of the property.