

Lorrimer Road, Aylestone

£160,000

A two-bedroom mid-terraced home on Lorrimer Road, Aylestone, offering scope to modernise. Featuring two reception rooms, a rear yard and gas central heating. An opportunity to update and personalise.

Council Tax band: A

Tenure: Freehold

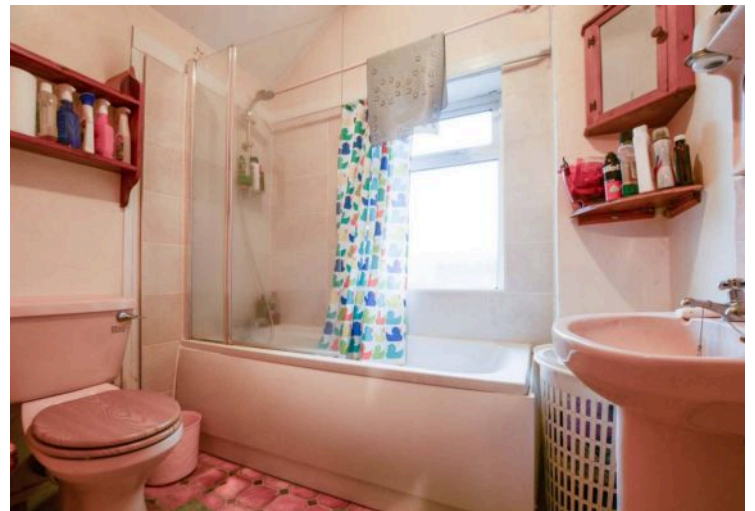
EPC Energy Efficiency Rating: TBC



Knightsbridge
Estate Agents

0116 274 5544





Reception Room One

11' 3" x 11' 3" (3.42m x 3.42m)

Entered via a double-glazed front door, featuring natural light from a double-glazed window to the front elevation, wood-effect laminate flooring, a chimney breast, and a radiator.

Reception Room Two

11' 6" x 11' 2" (3.50m x 3.41m)

Features natural light from a double-glazed window to the rear elevation, wood-effect laminate flooring, a chimney breast, a TV point, a radiator, and access to the kitchen.

Kitchen

13' 9" x 5' 7" (4.20m x 1.70m)

Features natural light from double-glazed windows to the side and rear elevations and a double-glazed door to the rear yard. Includes base and wall units with roll-edged work surfaces, a sink & drainer with mixer tap, a four-ring gas hob, plumbing for a washing machine, and a radiator.



Bedroom One

12' 10" x 11' 4" (3.90m x 3.45m)

Features natural light from a double-glazed window to the front elevation, a chimney breast, and a radiator.

Bedroom Two

11' 5" x 9' 9" (3.49m x 2.96m)

Features a double-glazed window to the rear elevation, a built-in over-stairs cupboard, and a radiator.

Bathroom

8' 0" x 7' 3" (2.44m x 2.20m)

Features a double-glazed window to the rear elevation, a bath with mixer shower tap, a low-level WC, a wash hand basin, a built-in cupboard, and a radiator.

Rear Garden

Low-maintenance rear yard with paving.



Ground floor



1st floor

FLOOR PLAN CREATED BY CUBICASA APP. MEASUREMENTS DEEMED HIGHLY RELIABLE BUT NOT GUARANTEED.

We'll keep you moving...



We must inform all prospective purchasers that the measurements are taken by an electronic tape and are provided as a guide only and they should not be used as accurate measurements. We have not tested any mains services, gas or electric appliances, or fixtures and fittings mentioned in these details, therefore, prospective purchasers should satisfy themselves before committing to purchase. Intending purchasers must satisfy themselves by inspection or otherwise to the correctness of the statements contained in these particulars. Knightsbridge Estate Agents & valuers (nor any person in their employment) has any authority to make any representation or warranty in relation to the property.' The floor plans are not to scale, and are intended for use as a guide to the layout of the property only. They should not be used for any other purpose. Similarly, the plans are not designed to represent the actual décor found at the property in respect of flooring, wall coverings or fixtures and fittings.