

Plovers Medcalf Hill

Widford, Ware

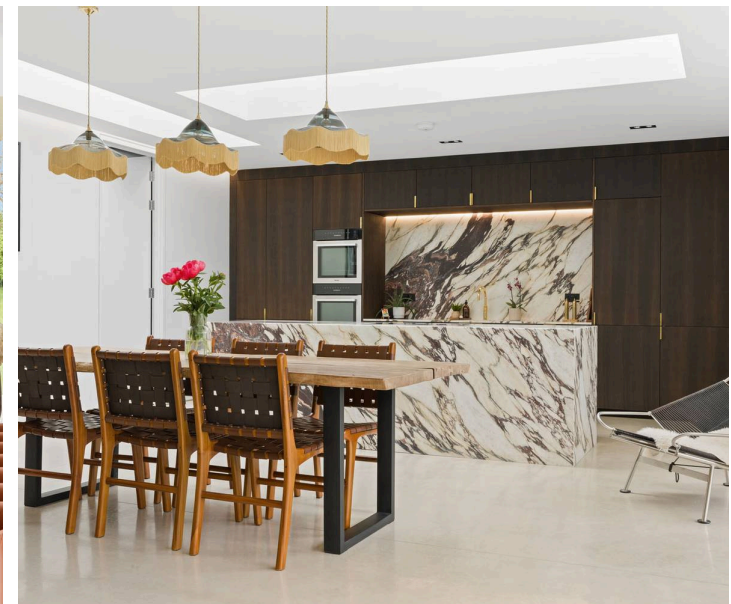
Guide Price £2,250,000

A contemporary five bedroom eco home awash with light, space and breath-taking design. Set back from the road, complete with an expansive private garden, swimming pool, electric gated driveway and double garage - this head turning home is a complete work of art. Welcome to Plovers.

Council Tax band: G

Tenure: Freehold

- Stylish Five Bedroom Home
- Expansive Garden with Swimming Pool
- Open Plan Living
- Two Ensuite Shower Rooms
- Gated Driveway & Double Garage
- Utility Room
- 0.8 acre plot (STLS)



Entrance Hallway

Kitchen / Diner

27' 0" x 19' 2" (8.23m x 5.84m)

Living Room

21' 9" x 19' 2" (6.64m x 5.84m)

Utility Room

16' 8" x 7' 9" (5.07m x 2.36m)

Study

12' 2" x 9' 5" (3.72m x 2.87m)

Bed / Family Room

12' 2" x 10' 0" (3.72m x 3.04m)

Ensuite Shower Room

Gym

15' 5" x 6' 9" (4.71m x 2.05m)

WC

Bedroom

11' 5" x 15' 6" (3.49m x 4.73m)

Walk in wardrobe

Ensuite Shower Room

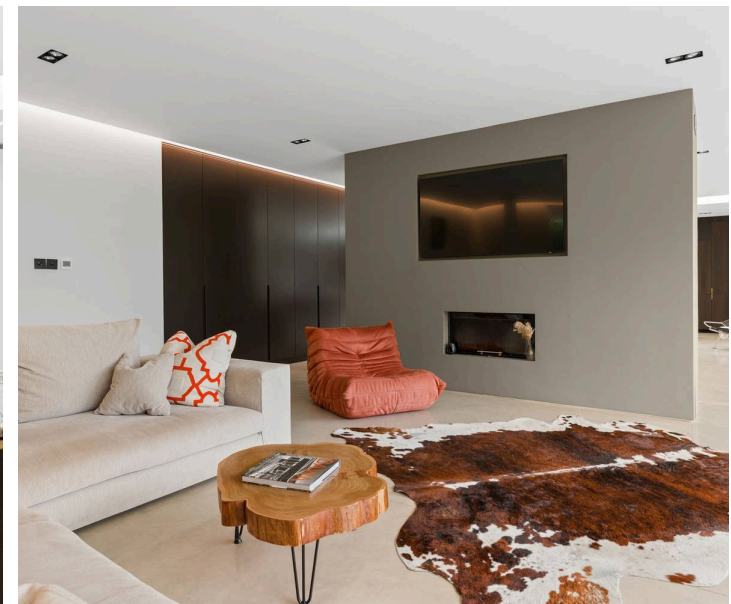
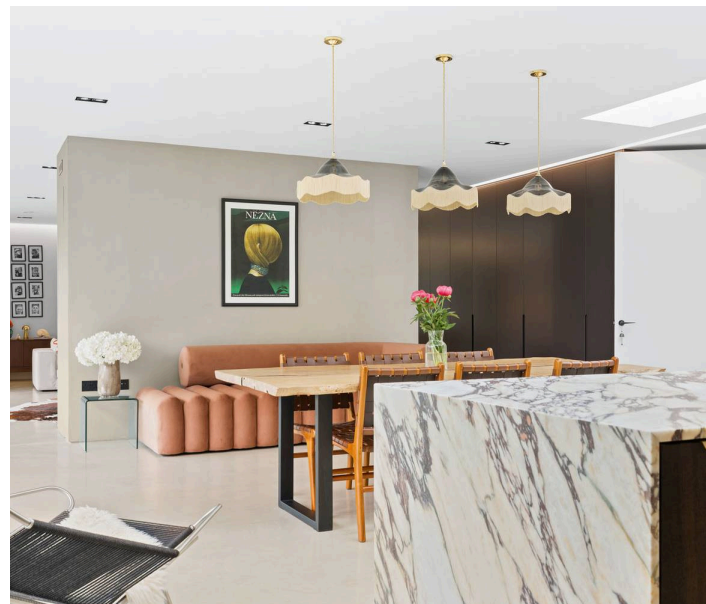
Bedroom

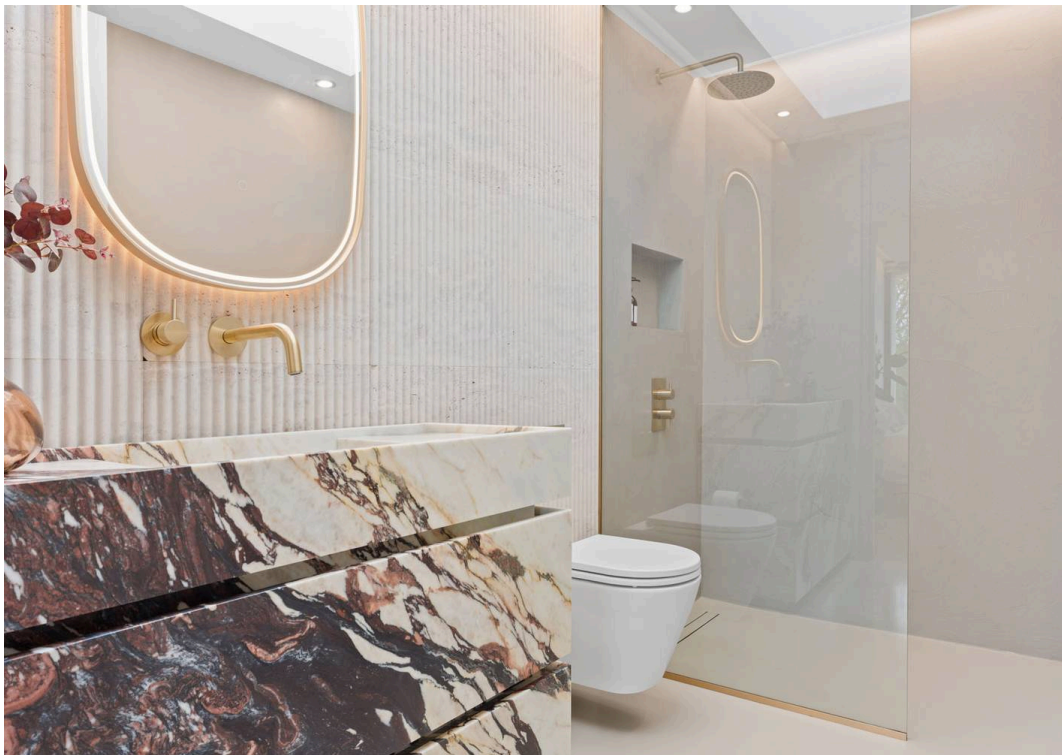
11' 0" x 12' 8" (3.36m x 3.85m)

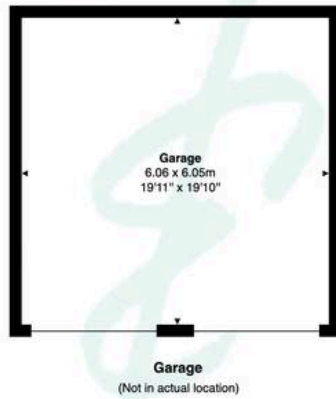
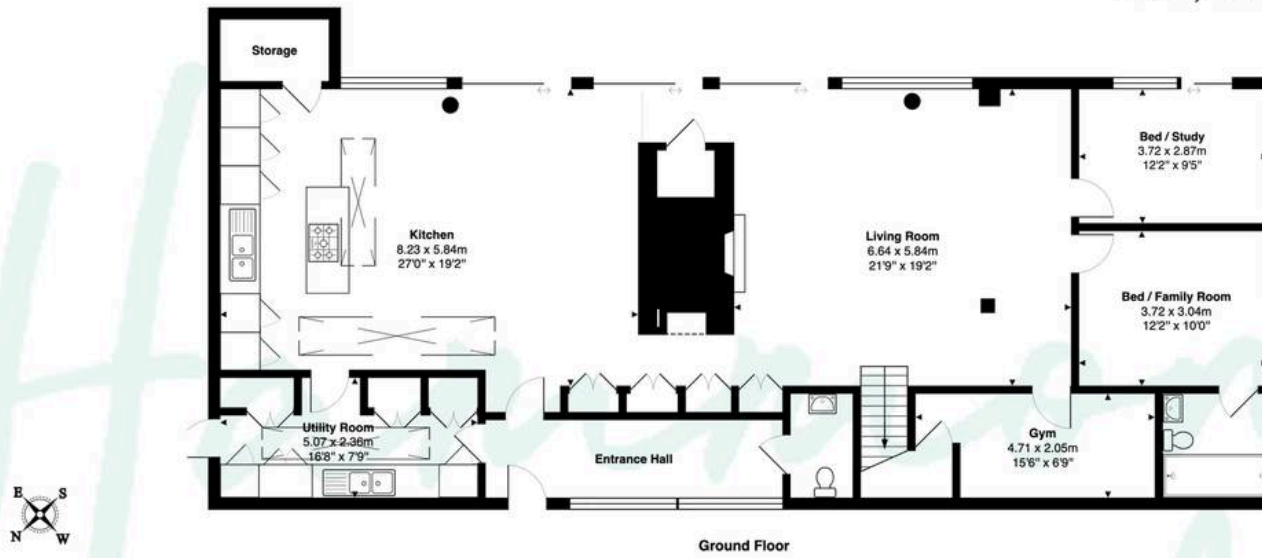
Bedroom

11' 0" x 11' 5" (3.36m x 3.49m)

Bathroom







Total Area: 280.56 m2...3019.9 sqft (excluding balconies)

This floor plan is for illustrative purposes only and is not to scale.
Measurements are approximate and intended as a guide. All details should be verified independently.