



Birkheads Road, Reigate

Guide Price £300,000 - £325,000

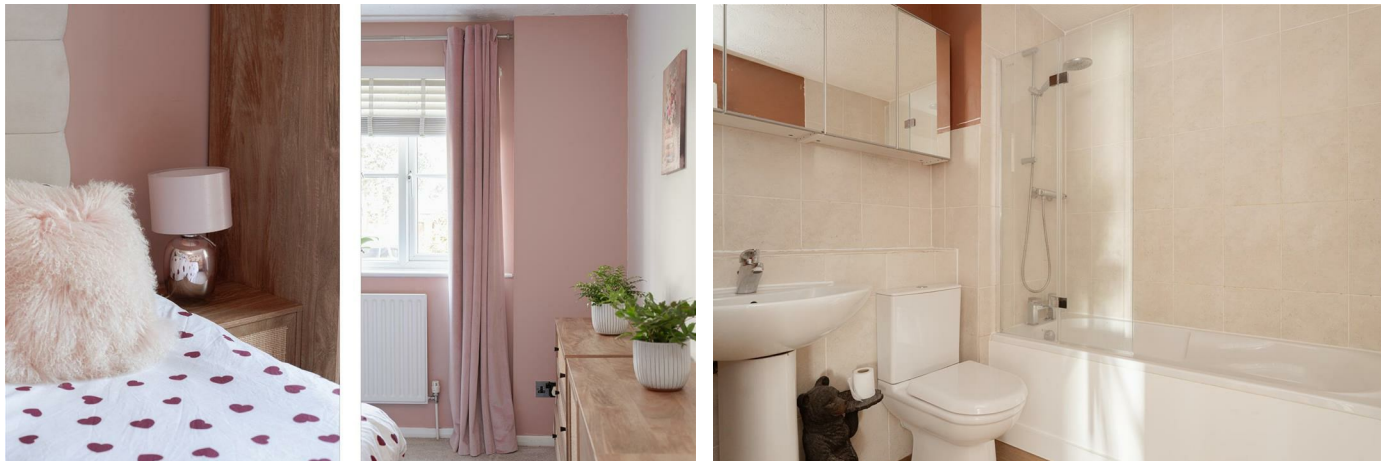




“

The location has been fantastic, everything Reigate has to offer is right on the doorstep. Bright and neutral throughout, it's a home that's easy to move into and make your own.

”



Guide Price £300,000 - £325,000

Some homes are all about location, and this one certainly delivers. Set within a secure gated development just moments from Reigate town centre and station, this beautifully presented ground floor apartment offers the perfect balance of convenience, comfort and practicality.

The heart of the home is the bright and spacious open plan sitting and dining room, a sociable space equally suited to relaxing after work or entertaining friends and family. The accommodation flows effortlessly and is complemented by two generous double bedrooms and a well appointed bathroom.

Being on the ground floor provides easy day to day living, whilst the rare addition of two allocated parking spaces is a real luxury in such a central location.

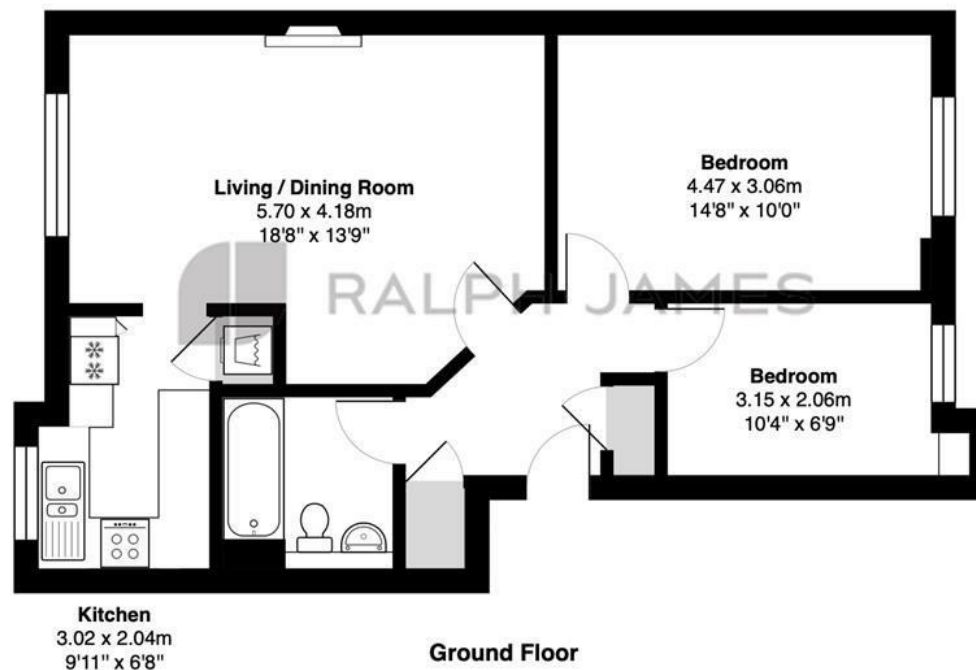
Step outside and everything Reigate has to offer is within easy reach. Independent cafés, restaurants and shops are all just a short stroll away, whilst Reigate station is 30 seconds from your door step making this an ideal choice for commuters, first time buyers, and investors.

Properties in this location rarely combine such generous accommodation, secure parking and immediate access to the town centre, making this a fantastic opportunity to secure a home that offers both lifestyle and convenience in equal measure.



Need to know

- Guide Price £300,000 - £325,000
- Beautifully presented ground floor apartment
- Located within a secure gated development
- Just a short walk from Reigate town centre and station
- Bright and spacious open plan sitting/dining room
- Two generous double bedrooms
- Modern and well appointed bathroom
- Two allocated parking spaces
- Ideal for commuters, first-time buyers, or investors
- Fantastic combination of central convenience, secure parking and low-maintenance living



Wanmer Court, Birkheads Road, Reigate

Total Area: 60.6 m² ... 652 ft²

FOR ILLUSTRATIVE PURPOSES ONLY.

Whilst every attempt has been made to ensure the accuracy of the floor plan shown, all measurements, positioning, fixtures, features, fittings and any other data shown are an approximate interpretation for illustrative purposes only and are not to scale.

No responsibility is taken for any error, omission, miss-statement or use of data shown.

The above statement applies to both 'Still Moving London LTD' and the Company or individual displaying this floor plan.

Unauthorised reproduction prohibited.

Â© Still Moving London LTD (www.stillmoving.london)

Interested?

reigate@ralphjames.co.uk
01737 333677

1

ralphjames.co.uk

