

clever



18 Camden Street

, Plymouth, PL4 8NW

Offers in excess of £950,000



SUPURB INVESTMENT OPPORTUNITY! LOCATED WITHIN VERY CLOSE PROXIMITY OF PLYMOUTH UNIVERSITY AND CITY CENTRE - MODERN BUILDING CONTAINING 14 STUDIO APARTMENTS PRODUCING GROSS ANNUAL INCOME OF £100,050 - 9.10% GROSS YIELD.

Kes House is located in a desirable, central location being divided into 14 self contained STUDIO APARTMENTS being fully let providing excellent income. Each Apartment has fully fitted Kitchens with integrated appliances and modern Shower Rooms. Recent upgraded Fire Alarm Systems added.

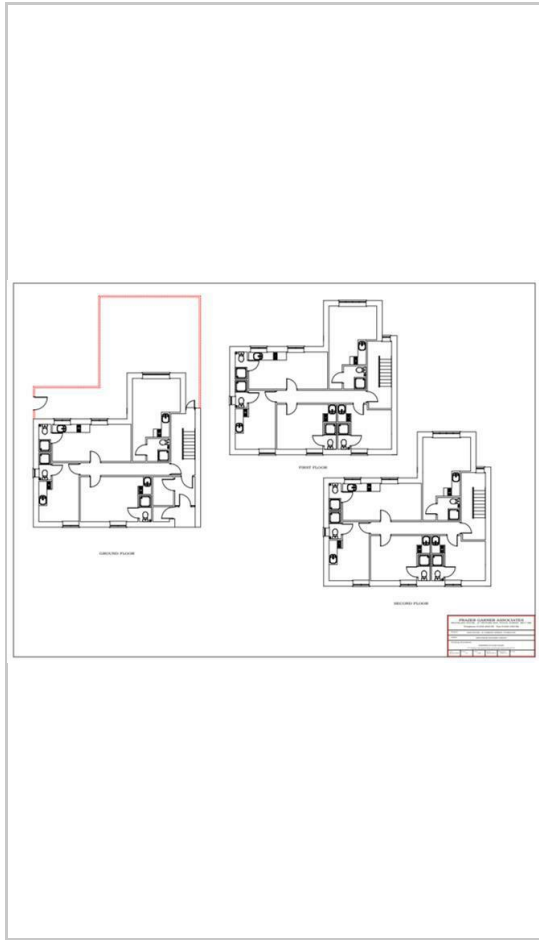
FLAT 1 - EPC C
FLAT 2 - EPC D
FLAT 3 - EPC D
FLAT 4 - EPC D



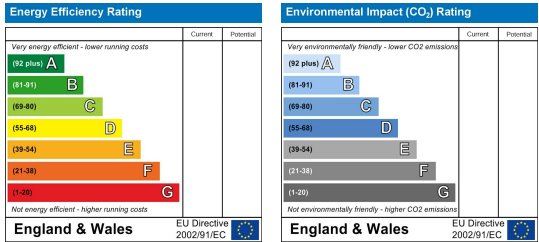
Area Map



Floor Plans



Energy Efficiency Graph



These particulars, whilst believed to be accurate are set out as a general outline only for guidance and do not constitute any part of an offer or contract. Intending purchasers should not rely on them as statements of representation of fact, but must satisfy themselves by inspection or otherwise as to their accuracy. No person in this firms employment has the authority to make or give any representation or warranty in respect of the property.