



8 Hillcroft Close, Bristol, BS15 3GF

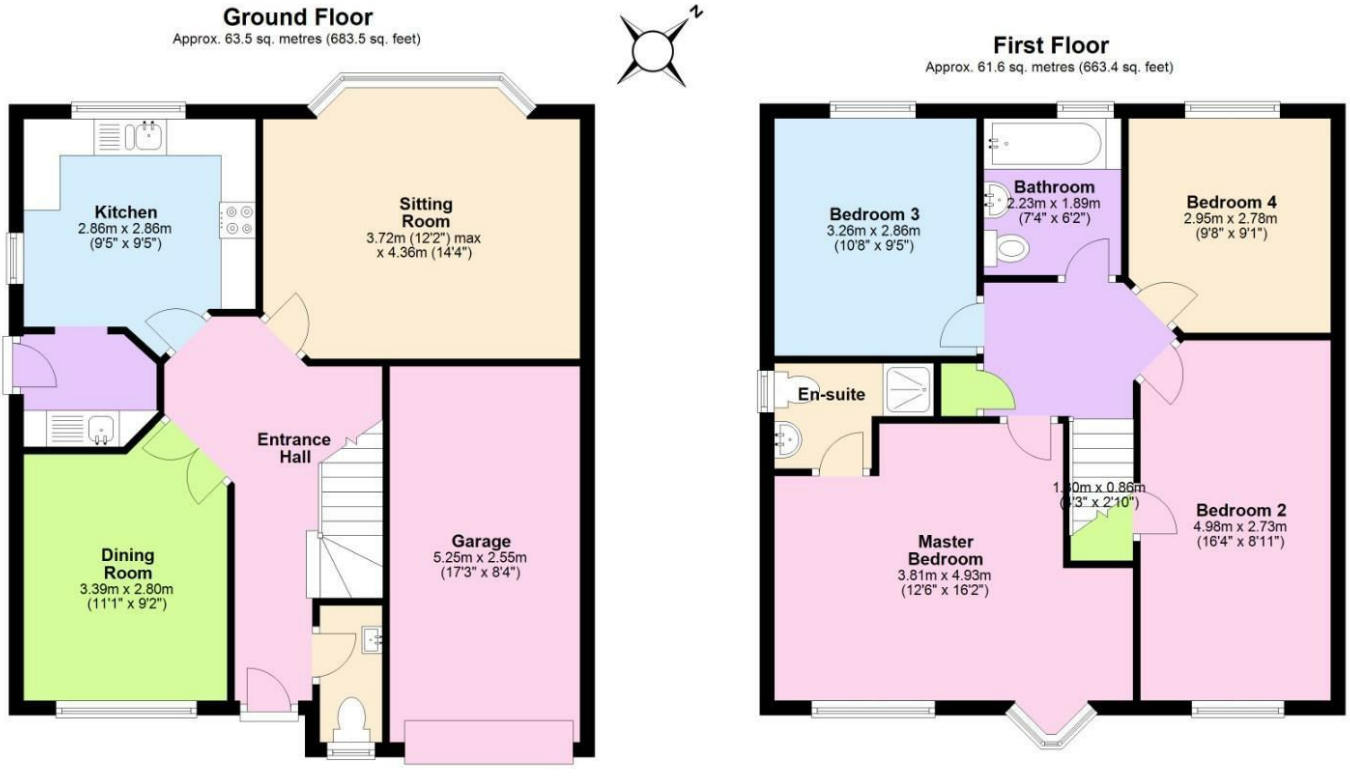
£2,200

This fantastic detached four bed family abode is crying out to be made a home. Situated in the ever popular location of Hanham, this property boasts fantastic spaces, both inside and out. Light and airy with a large modern kitchen, en suite, spacious family living areas and that all important office room potential, we're not sure what more you could ask for.

It's also perfectly positioned for the areas fantastic schools and local amenities . Plus it's only a short drive away form Bristol, Bath and Keynsham.

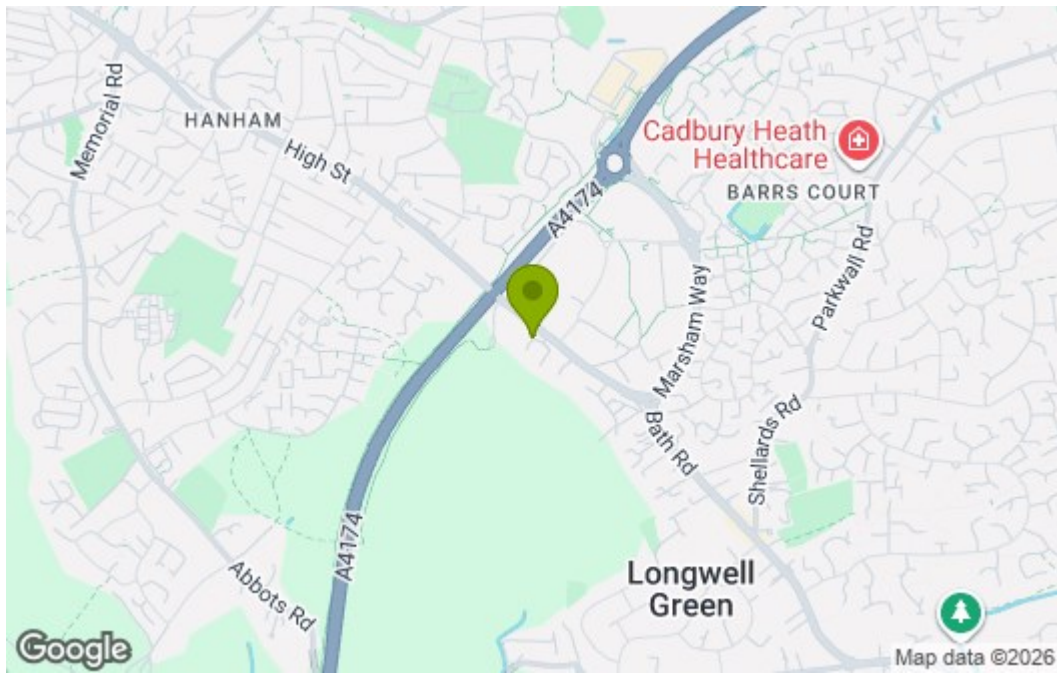
And if that's not enough, cycle paths and beautiful open spaces are only minutes away These properties rarely come to the rental market , so what are you waiting for ?

Floor Plan

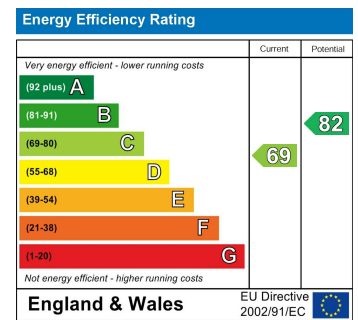


Total area: approx. 125.1 sq. metres (1346.9 sq. feet)
8 Hillcroft close, Bristol

Area Map



Energy Efficiency Graph



These particulars, whilst believed to be accurate are set out as a general outline only for guidance and do not constitute any part of an offer or contract. Intending purchasers should not rely on them as statements of representation of fact, but must satisfy themselves by inspection or otherwise as to their accuracy. No person in this firm's employment has the authority to make or give any representation or warranty in respect of the property.