



Crow Lane | | Rochester | ME1 1RF

£525,000



Crow Lane |
Rochester | ME1 1RF
£525,000

Nestled in the heart of Historic Rochester, this exceptional Grade II Listed period cottage offers a rare opportunity to own a home full of character just moments from Rochester High Street and within easy walking distance of Rochester's mainline railway station, providing high-speed services to London St Pancras.

Beautifully presented throughout, the property is brimming with original features including exposed timber floorboards, working fireplaces, exposed brickwork, traditional timber doors and an abundance of period charm, perfectly blended with tasteful modern décor.

The accommodation offers a welcoming sitting room with a working fireplace, a separate dining room ideal for entertaining, and a charming country-style kitchen complete with a traditional range cooker, Belfast sink, solid wood worktops and an original fireplace.

- Original Features
- Close to town
- Grade 2 Listed

Dining Room

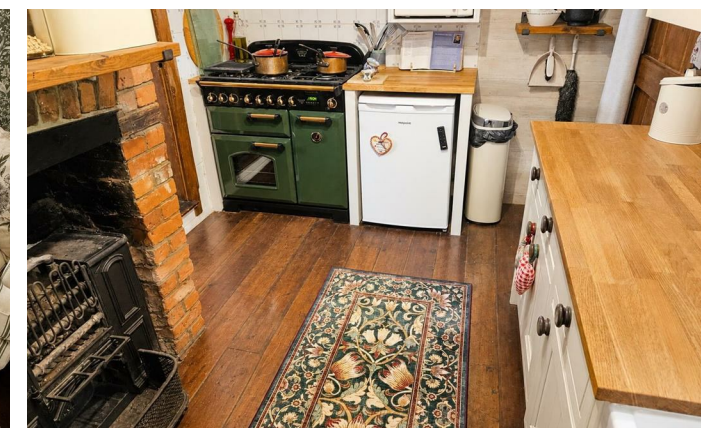
12'0" x 11'11" (3.66 m x 3.63 m)

The dining room is warm and inviting with a charming exposed brick wall that adds character. A large sash window floods the space with natural light, highlighting the wooden dining table and modern wire chairs. Soft curtains frame the window, complementing the muted wall tones and creating a cosy yet stylish setting for meals.

Lounge

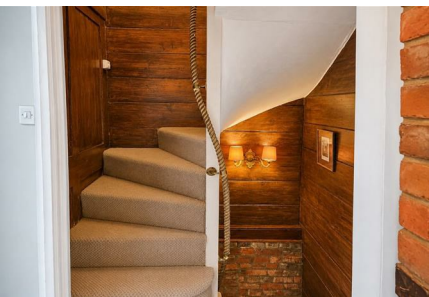
11'11" x 11'3" (3.63 m x 3.43 m)

A beautifully presented reception room combining period character with contemporary comfort. This inviting living space features original timber floorboards, elegant botanical décor and a large front-facing sash window fitted with plantation shutters, allowing an abundance of natural light whilst maintaining privacy. There is ample space for two generous sofas and additional furniture, creating an ideal setting for both relaxing and entertaining. Charming character features enhance the sense of space, while the room flows effortlessly into the rest of the home, making it a warm and welcoming focal point.



A Beautiful Grade II Listed Period Cottage in the Heart of Historic Rochester

Tucked away on one of Rochester's most sought-after historic streets, this beautifully presented Grade II Listed period cottage effortlessly combines centuries of character with stylish modern living. Located on the picturesque Crow Lane, just moments from Rochester High Street and within easy walking distance of Rochester's mainline railway station, this is a rare opportunity to own a truly unique home



Kitchen

11'7" x 8'5" (3.53 m x 2.57 m)

The kitchen has a charming, traditional feel with wooden worktops and white cabinetry. A large farmhouse sink sits beneath a window, inviting natural light in to brighten the space. The kitchen benefits from a feature wood-burning stove set into an exposed brick chimney breast, adding character and a cosy ambience. The layout is practical, with ample counter space and a wooden door leading outside.

Landing

The staircase is carpeted in a neutral tone and bordered with wooden panelling that enhances the traditional character of the home. A rope handrail adds a nautical touch, while wall-mounted lamps provide subtle, warm lighting. The stairwell leads up to the first floor landing.

Main Bedroom

12'4" x 11'7" (3.76 m x 3.53 m)

The main bedroom is bright and airy with white walls and parquet flooring. A fireplace with a white surround adds a touch of elegance, while chic furnishings including a dresser and shelving provide practical storage. A window allows plenty of natural light to flood the room, creating a peaceful and restful atmosphere.

Bedroom Two

12'0" x 7'9" (3.66 m x 2.36 m)

Bedroom Two is a large double room with panelling, original wooden floors and fitting wardrobe. It features a sash window with shutters, allowing light to flow in while maintaining privacy. The room feels intimate and comfortable, ideal for a single bedroom or study space.

Bedroom Three

12'10" x 11'6" (3.91 m x 3.51 m)

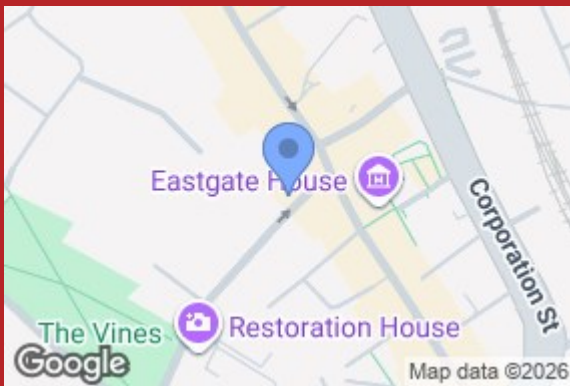
This bedroom exudes charm with a pretty green painted paneled wall behind the bed. The crisp white bedding is complemented by patterned cushions and hanging plants, creating a fresh and inviting space. A bedside cabinet and decorative items add homely touches to this peaceful room.

Rear Garden

The rear garden is a charming and tranquil outdoor space, featuring a combination of brick and gravel paths surrounded by lush greenery and mature plants. A vine-draped archway creates an inviting entrance, leading to a patio area with wrought iron garden furniture for outdoor dining or relaxing. The garden feels private and peaceful, perfect for enjoying sunny days and quiet moments.

Courtyard

This smaller, paved patio area in the garden offers a cosy and intimate spot for two. Set against a whitewashed wall with a decorative arched mirror, the space is perfect for morning coffee or quiet relaxation surrounded by plants and greenery.



2B Crow Lane
Rochester
Kent
ME1 1RF
01634 829080

admin@machin-lane.co.uk
<https://www.machin-lane.co.uk/>