



18 Revel Road

Higher Compton, Plymouth, PL3 5EH

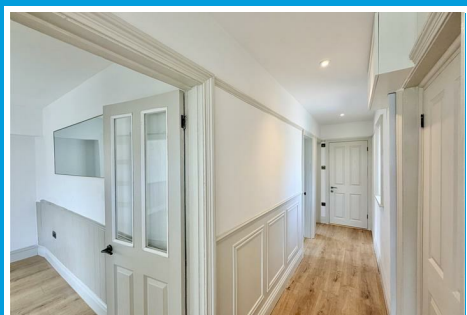
£375,000



18 Revel Road

Higher Compton, Plymouth, PL3 5EH

£375,000



REVEL ROAD, HIGHER COMPTON, PLYMOUTH, PL3 5EH

THE PROPERTY

Set on a generous corner plot on Revel Road, this beautifully reimagined 1930s detached bungalow has been extensively refurbished and interior designed to a high standard, to blend timeless character with contemporary living.

Externally, the home presents with a refined, modern aesthetic. A new roof, fresh exterior finishes and updated cladding have been carefully chosen to compliment the homes original character, while giving it a clean, contemporary edge. The front & rear gardens have been carefully landscaped to create flat, usable outdoor spaces that are both elegant & low maintenance, perfect for relaxed living & easy access. A garden shed provides additional practical storage, while at the front, a private driveway to the front of the property offers generous off-road parking.

Inside, the property has been fully renovated with a focus on light, flow & considered detail at every turn. A welcoming entrance porch with built-in seating storage leads into a central panelled hallway, that sets the tone beautifully. The main living room is bright & inviting, centred around a large picture window with extensive views, that draws in natural light, complemented by a feature fireplace and built-in cabinetry. Double doors open through to a separate dining room, creating a seamless yet flexible layout for both everyday living & hosting. The kitchen has been newly installed & finished to a high standard, complete with integrated appliances & a wide roof light that gives the space a clean, contemporary feel. A separate utility room leads

directly out onto the rear patio through an attractive stable door—enhancing the connection between indoor & outdoor living. There are two generously sized double bedrooms, both bright with large windows & bespoke fitted wardrobes. The bathroom has been newly fitted designed with a fresh, modern aesthetic and wood panelling.

Offered with no onward chain, this is a turnkey home which has been beautifully finished, effortlessly liveable & ready to move straight into. Ideal for those seeking refined single-level living without compromise, in a home where every detail has been carefully considered.

LOCATION

Found in this popular, established, residential area of Higher Compton with an excellent variety of local services & amenities close by.

ACCOMMODATION

ENTRANCE PORCH

8'3 x 3'2 (2.51m x 0.97m)

Electric heater. Built-in seat storage.

HALL

20'8 x 3'3 (6.30m x 0.99m)

Panelled hallway.

LOUNGE

14'9 x 10'11 (4.50m x 3.33m)

Feature fireplace with built-in shelving and storage cupboard to the right. Sliding doors into;

DINING ROOM

11'2 x 6'11 (3.40m x 2.11m)

KITCHEN

10'6 x 6'3 (3.20m x 1.91m)

Window overlooking rear garden & wide roof light. Quality brand new fitted integrated kitchen with an excellent range of cupboard & drawer storage. Including an upright fridge/freezer, wine storage, 4 ring induction hob with extractor hood over & electric oven under, 1.5 bowl sink unit with mixer tap & dishwasher. Door to;

UTILITY ROOM

5'10 x 5'5 (1.78m x 1.65m)

Stable style door to the rear garden. Fitted units & washer/dryer & wall mounted I Mini 2 gas fired boiler servicing the central heating & domestic hot water.

BEDROOM ONE

11'1 x 9'10 (3.38m x 3.00m)

Window to the rear. King-sized bed space with built-in bespoke wardrobes & bedside cupboards to either side. Panelled wall.

BEDROOM TWO

11' x 9'8 maximum (3.35m x 2.95m maximum)

Window to the rear. Bespoke built-in wardrobe with drawers and hanging space. Half panelled wall.

BATHROOM

6'3 x 6'1 (1.91m x 1.85m)

Quality new fitted bathroom including bath with mixer tap & separate thermostatic shower over, wash hand basin, wc & backlit mirror. Decorative wood panelling feature.

COUNCIL TAX

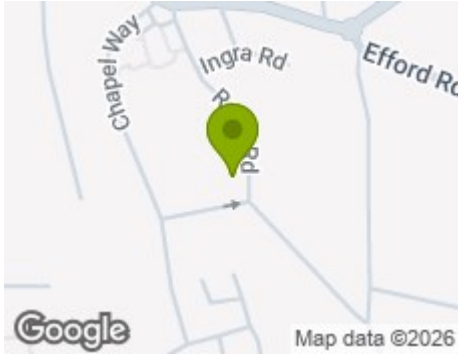
Plymouth City Council
Council Tax Band: C

SERVICES

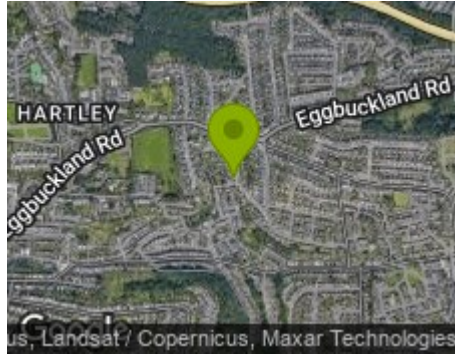
The property is connected to all the mains services: gas, electricity, water and drainage.



Road Map



Hybrid Map

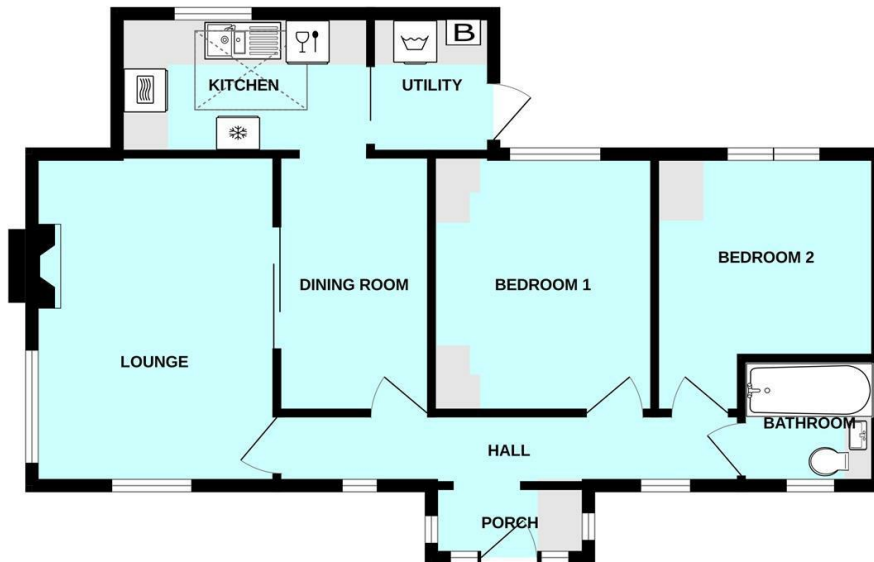


Terrain Map



Floor Plan

GROUND FLOOR
678 sq.ft. (63.0 sq.m.) approx.

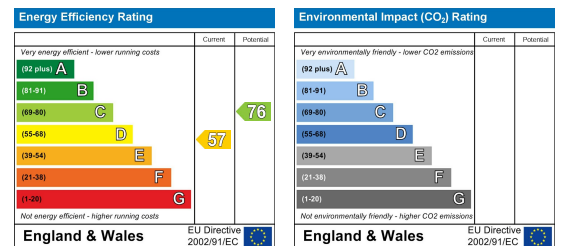


TOTAL FLOOR AREA: 678 sq.ft. (63.0 sq.m.) approx.
Made with Metropix ©2026

Viewing

Please contact our Plymouth Office on 01752 664125 if you wish to arrange a viewing appointment for this property or require further information.

Energy Efficiency Graph



These particulars, whilst believed to be accurate are set out as a general outline only for guidance and do not constitute any part of an offer or contract. Intending purchasers should not rely on them as statements of representation of fact, but must satisfy themselves by inspection or otherwise as to their accuracy. No person in this firm's employment has the authority to make or give any representation or warranty in respect of the property.