



Glyn Road, E5

£5,000 Per calendar month

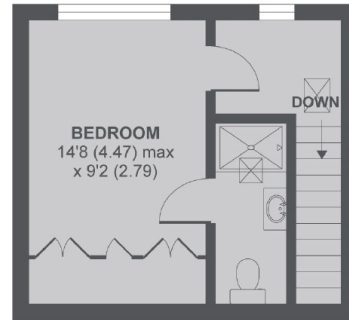
An end of terrace four bedroom townhouse, split over three levels on Glyn Road. This property is over 1,350sq ft and includes a private terrace, three bathrooms and all good size double bedrooms.

Located moments from Homerton University Hospital this family home is placed nearby all the amenities of Homerton High Street and equidistant from both Hackney and Homerton overground stations.

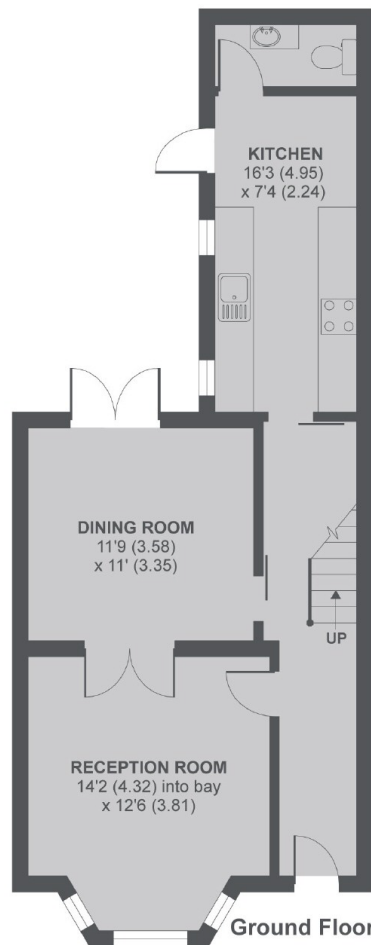
Features

- End Of Terrace
- Split Level
- Private Outside Space
- Good Size Doubles
- Local Amenities
- Great Location

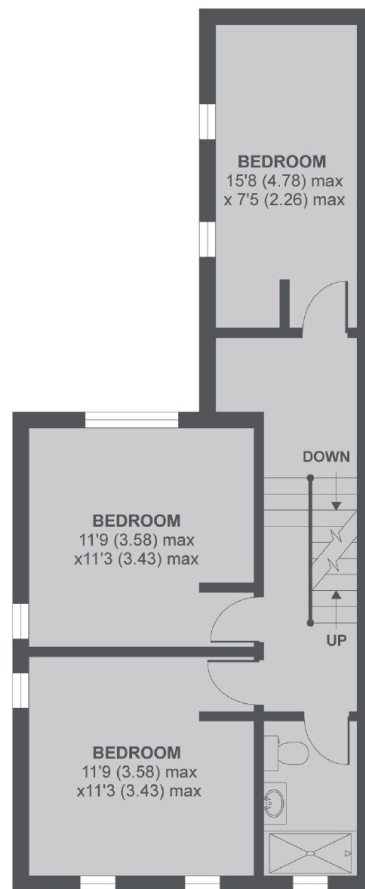
Glyn Road, London, E5



2nd Floor



Ground Floor



1st Floor

Glyn Road E5

TOTAL HOUSE APPROX FLOOR AREA 1347 SQ.FT 125 SQ.M

Copyright nichecom.co.uk 2017 REF : 229632

Dexters

Hackney Central
331 Mare Street
Hackney
London
Lettings
020 7067 2421

Energy Rating: C. We aim to make our particulars both accurate and reliable. However they are not guaranteed; nor do they form part of an offer or contract. If you require clarification on any points then please contact us, especially if you're traveling some distance to view. Please note that appliances and heating systems have not been tested and therefore no warranties can be given as to their good working order.



dexters.co.uk