



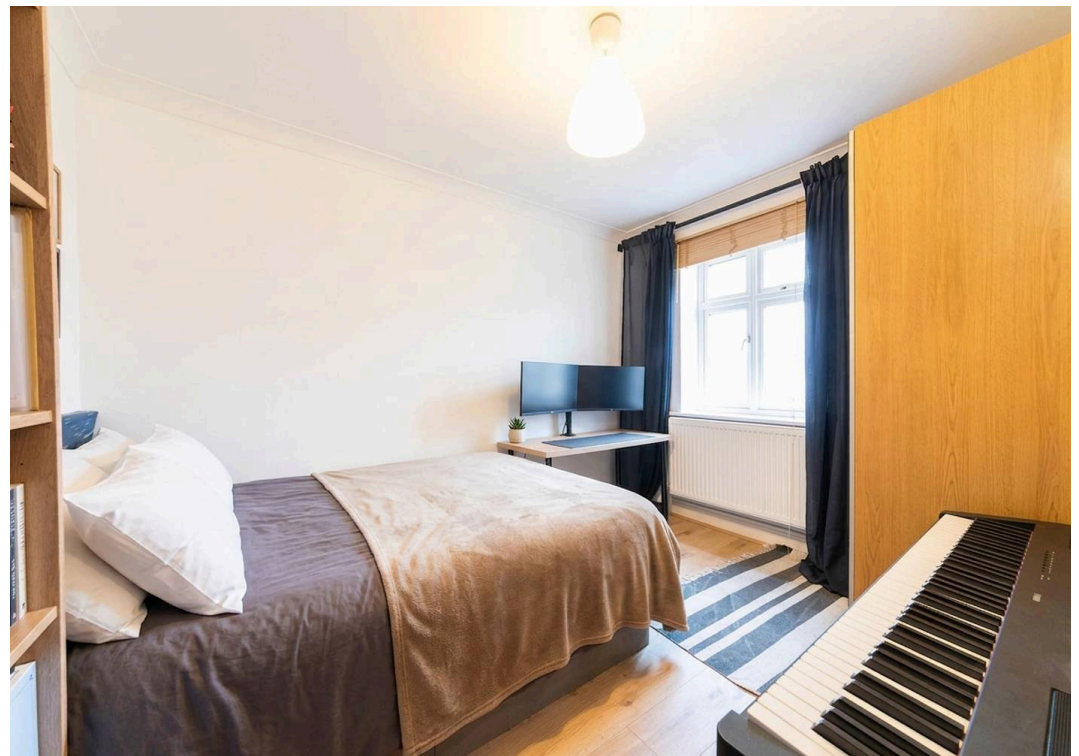
Heathfield Park, Willesden Green, NW2

£2,175 pcm

Heathfield Park, Willesden Green, NW2

This is a great apartment in a modern newly built block a short walk from Willesden Green tube. The apartment has been completed to a good standard throughout with modern fixtures and fittings and double glazing. The lounge is open plan with the kitchen and has a French door that opens to a private garden. The bedrooms are doubles. The flooring is a combination of wood in the lounge area, carpets in the bedrooms and tiled bathrooms. The bathroom has a modern shower only and ceramic WC and sink. The property is double glazed throughout. Please Contact the Office for further details.







Black Katz

22 West Hampstead Mews, London - NW6 3BB

02073285000 • Thomas@blackkatz.com • blackkatz.com/