

*Symonds
Taylor*



24 Dorchester Place, Kenton Bank Foot

Newcastle Upon Tyne

Offers Over **£525,000**



24 Dorchester Place

Kenton Bank Foot, Newcastle Upon Tyne

This detached family home is located on the edge of the city on a modern development close to Kingston Park and has double driveway and a lovely garden which will need to be viewed to be appreciated.

Accommodation comprises:

Ground floor: Entrance hallway, cloakroom/wc, sitting room, study, open plan living room/dining kitchen, utility room.

First floor: Landing, principal bedroom, ensuite shower room, bedroom 2, bedroom 3, bedroom 4, family bathroom.

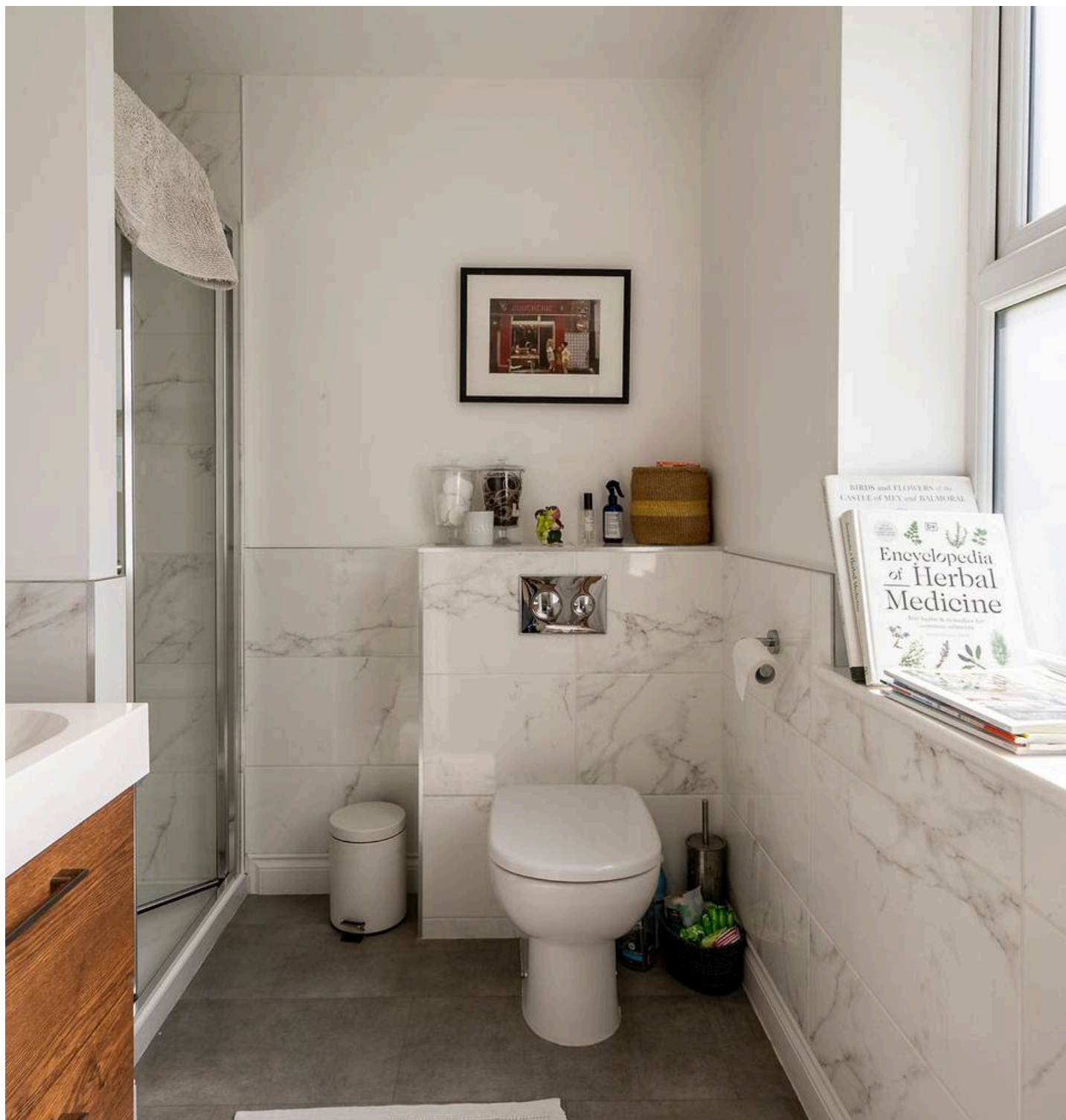
Outside: Front town garden, double length driveway, ample parking, single garage converted into storage & home gym/garden room.

Council Tax band: E

Tenure: Freehold

EPC Energy Efficiency Rating: B

EPC Environmental Impact Rating: B

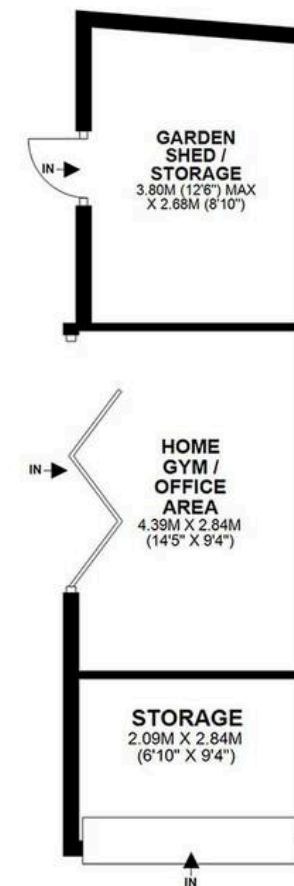
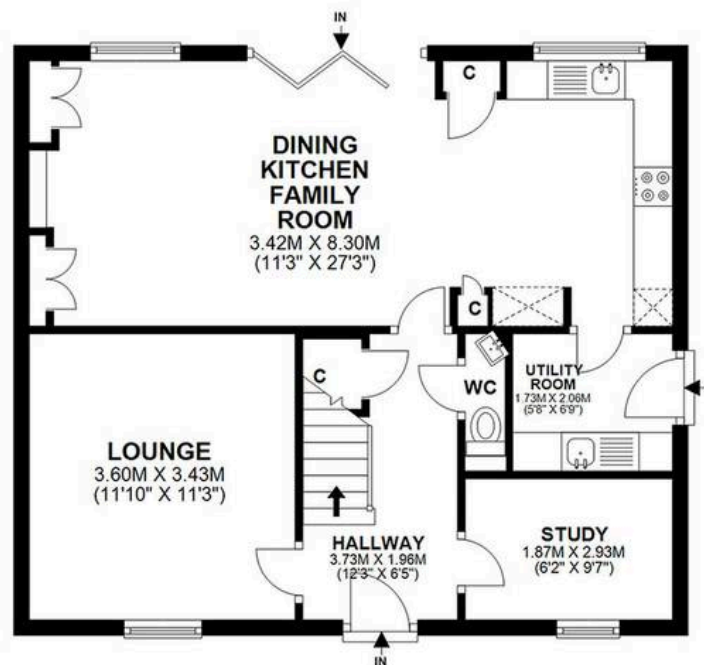




GROUND FLOOR



FIRST FLOOR



24 DORCHESTER PLACE, KENTON BANK FOOT, NE13 8BE

APPROXIMATE GROSS INTERNAL AREA 125 SQ M 1345 SQ FT - NOT TO SCALE - FOR ILLUSTRATIVE PURPOSES ONLY
All measurements and fixtures including doors and windows are approximate and should be independently verified.





Symonds Taylor

101 St. Georges Terrace, Jesmond - NE2 2DN

0191 338 9999 • hello@symondstaylor.co.uk • www.symondstaylor.co.uk

All descriptions, plans or references to condition are given in good faith only. Whilst every endeavour is made to ensure accuracy, please check with us on any points of especial importance to you.