



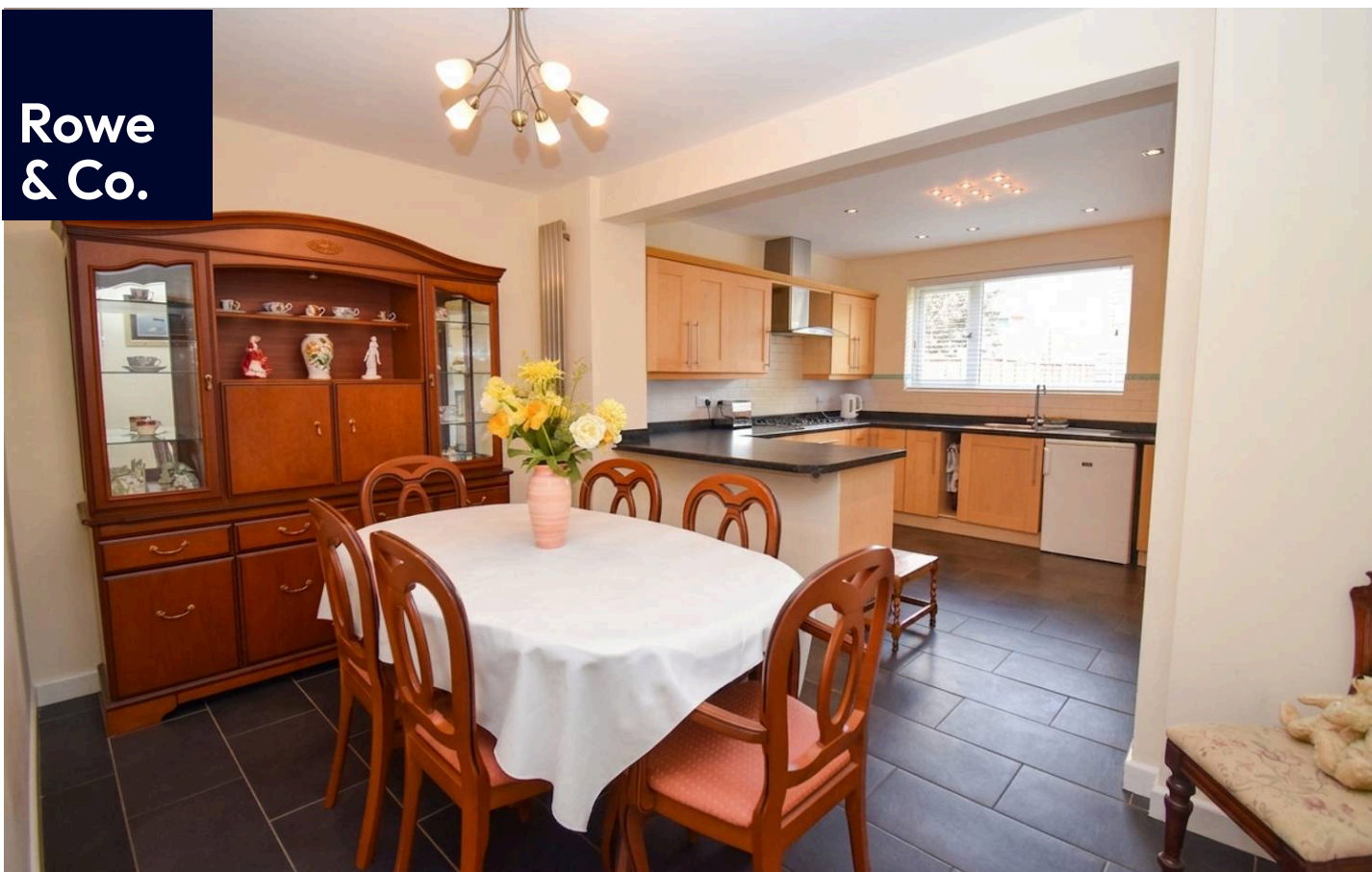
**Rowe
& Co.**

36 Corinthian Road, Chandler's Ford

Eastleigh

In Excess of **£400,000**

**Rowe
& Co.**



36 Corinthian Road

Chandler's Ford, Eastleigh

Offered with no forward chain, this beautifully presented two-bedroom semi-detached home is located in the highly sought-after area of Scantabout. The accommodation comprises a welcoming entrance hall, a spacious lounge, a modern shower room, a well-appointed kitchen/dining room, and a separate utility area. To the first floor are two generous double bedrooms along with an additional W/C. Externally, the property benefits from a large driveway providing ample off-road parking and a secluded rear garden, ideal for relaxing or entertaining. The garden also features a versatile home office/garden room, perfect for remote working, hobbies, or additional living space.

LOCATION

Chandler's Ford is a popular Hampshire town with a variety of shops, restaurants, traditional inns and with Chilworth golf course also within easy reach. Schooling is typically excellent celebrating some of the best Ofsted ratings in the country and include Thornden & Toynbee secondary school alongside a selection of private schools. It is approximately a 15 minute drive to Winchester and a 17 minute drive to Southampton, both cities have an extensive range of facilities. Communications are excellent with the M3 and M27 nearby and the railway station has links to Winchester and Southampton; London Waterloo is 57 minutes from Winchester and 65 minutes from Southampton Parkway.

Council Tax band: C - Tenure: Freehold

EPC Energy Efficiency Rating: D



36 Corinthian Road

Chandler's Ford, Eastleigh

INSIDE

Upon entering the property, you are greeted by a spacious entrance hall with doors leading to all principal rooms and attractive oak staircase rising to the first floor. To the front of the property is a bright and inviting lounge, featuring a window overlooking the front aspect and offering ample space for a range of freestanding furniture. The ground floor also benefits from a stylish, fully tiled shower room fitted with a walk-in shower, low-level W/C, and wash hand basin.

To the rear is a generously sized kitchen/dining room with tiled flooring and a window overlooking the rear garden. The dining area comfortably accommodates a large table and chairs, making it ideal for both family living and entertaining. The kitchen is fitted with a range of wall and base units with complementary work surfaces and breakfast bar.

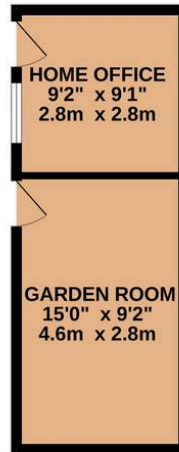
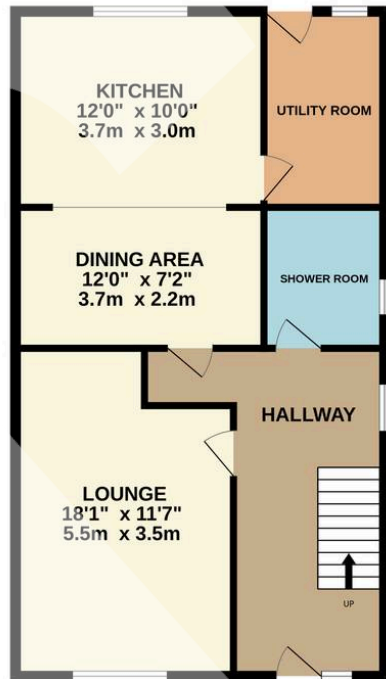
A door leads through to a practical utility room, which also provides access to the rear garden. The first floor offers two well-proportioned bedrooms, both benefiting from fitted wardrobes, along with a separate W/C.

OUTSIDE

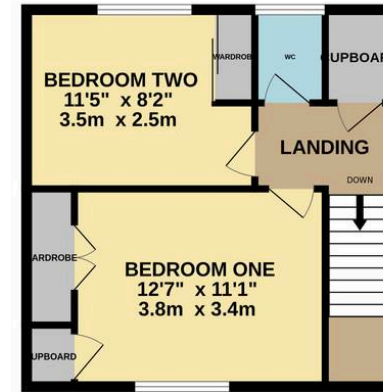
To the front of the property is a driveway that can accommodate parking for multiple vehicles. There is gated pedestrian access leading to the rear, which also provides space for additional parking. The garage has been converted into two further rooms, which can be used for storage or as a home office, garden room, or playroom. The garden is mostly laid to lawn with a variety of planted shrubs and a paved seating area.




GROUND FLOOR



1ST FLOOR



 1 Rufus Court, 103 Winchester Road
Chandlers Ford,
SO53 2GG

 02381 102221
 chandlersford@rowehomes.co.uk