



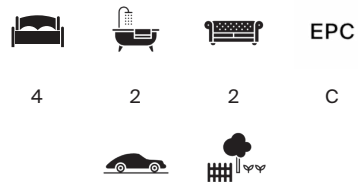
OATLANDS CLOSE

Weybridge, Surrey, KT13



AN ATTRACTIVE FOUR BEDROOM SEMI-DETACHED HOME

Situated within a highly desirable private road in the heart of Oatlands Village, this attractive home offers approximately 2,500 sq ft of beautifully arranged accommodation, combining character features with generous, family-focused living space.



Local Authority: Elmbridge Borough Council

Council Tax band: G

Tenure: Freehold



DESCRIPTION

Set behind a spacious gravel driveway providing ample off street parking and access to an integral garage, the property enjoys an appealing frontage with mature planting and a welcoming entrance.

Internally, the home offers well-balanced, versatile accommodation throughout. The standout feature is the impressive 33 ft open-plan kitchen/dining room, thoughtfully designed with extensive solid wood cabinetry, a central peninsula and excellent workspace. This bright and sociable space opens via bi-fold doors onto the rear terrace, creating a seamless connection between indoor and outdoor living—ideal for entertaining and modern family life.











LOCATION DESCRIPTION

Oatlands Close is a quiet, exclusive private road, ideally located within easy reach of Queens Road, with its excellent selection of boutique shops, cafés and restaurants.

Weybridge town centre and mainline stations are also conveniently accessible, providing fast links to London Waterloo. The area is particularly well regarded for its outstanding choice of both state and private schools, making this an exceptional location for families. Weybridge and Walton offer an extensive range of leisure pursuits, including river walks and bike rides along the towpaths of the Thames and the Wey.

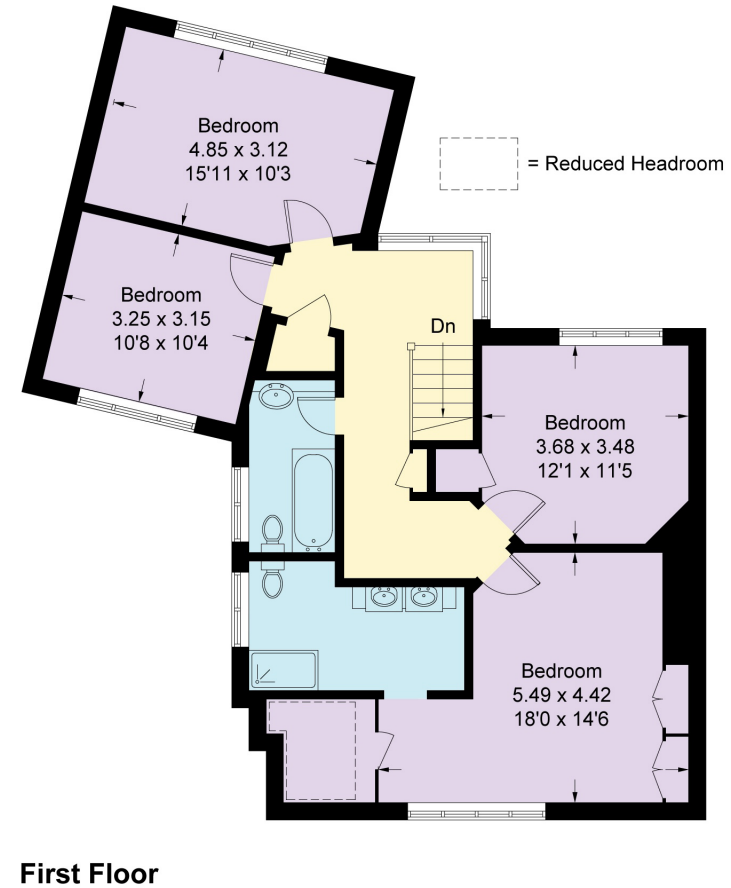
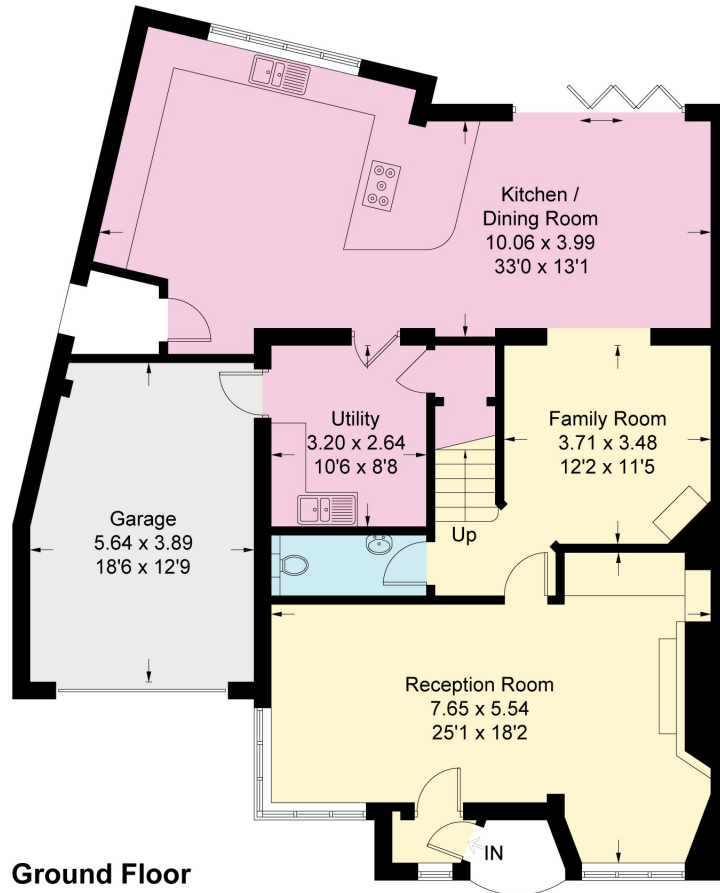


Weybridge town centre has a range of both high street chains and individual boutiques, including a Waitrose supermarket and an excellent mix of restaurants and gastro pubs, including Giggling Squid, Gails, The Minnow and The Queens Head pub. Brooklands also offers a wider range of shopping, including Marks and Spencer. Mercedes-Benz World and the famous Brooklands Museum are also located in Brooklands.



Oatlands Close, KT13

Approximate Gross Internal Area = 231.9 sq m / 2496 sq ft
(Including Reduced Headroom)



Measured in accordance with RICS Code of Measuring Practice. To be used for identification and guidance purposes only.
Whilst every care is taken in the preparation of this plan, please check all dimensions, shapes and compass bearings before making any decisions reliant upon them.
www.london58.com © 2026 hello@london58.com

Approximate Gross Internal Area = 231.9 sq m / 2496 sq ft

This plan is for layout guidance only. Not drawn to scale unless stated. Windows and door openings are approximate. Whilst every care is taken in the preparation of this plan, please check all dimensions, shapes and compass bearings before making any decisions reliant upon them. (ID767266)

Tom Barham

01932 591 618

thomas.barham@knightfrank.com

Knight Frank Weybridge

20 High Street

Weybridge KT13 8AB

knightfrank.co.uk

Your partners in property

1. Particulars: These particulars are not an offer or contract, nor part of one. You should not rely on statements given by Knight Frank in the particulars, by word of mouth or in writing ("information") as being factually accurate about the property, its condition or its value. Neither Knight Frank nor any joint agent has any authority to make any representations about the property, and accordingly any information given is entirely without responsibility on the part of Knight Frank. 2. Material Information: Please note that the material information is provided to Knight Frank by third parties and is provided here as a guide only. While Knight Frank has taken steps to verify this information, we advise you to confirm the details of any such material information prior to any offer being submitted. If we are informed of changes to this information by the seller or another third party, we will use reasonable endeavours to update this as soon as practical. 3. Photos, Videos etc: The photographs, property videos and virtual viewings etc. show only certain parts of the property as they appeared at the time they were taken. Areas, measurements and distances given are approximate only. 4. Regulations etc: Any reference to alterations to, or use of, any part of the property does not mean that any necessary planning, building regulations or other consent has been obtained. A buyer must find out by inspection or in other ways that these matters have been properly dealt with and that all information is correct. 5. Fixtures and fittings: A list of the fitted carpets, curtains, light fittings and other items fixed to the property which are included in the sale (or may be available by separate negotiation) will be provided by the Seller's Solicitors. 6. VAT: The VAT position relating to the property may change without notice. 7. To find out how we process Personal Data, please refer to our Group Privacy Statement and other notices at <https://www.knightfrank.com/legals/privacy-statement>.

Particulars dated May 2026 Photographs and videos dated May 2026. All information is correct at the time of going to print. Knight Frank is the trading name of Knight Frank LLP. Knight Frank LLP is a limited liability partnership registered in England and Wales with registered number OC305934. Our registered office is at 55 Baker Street, London W1U 8AN. We use the term 'partner' to refer to a member of Knight Frank LLP, or an employee or consultant. A list of members names of Knight Frank LLP may be inspected at our registered office. If you do not want us to contact you further about our services then please contact us by either calling 020 3544 0692, email to marketing.help@knightfrank.com or post to our UK Residential Marketing Manager at our registered office (above) providing your name and address.

