



Prayle Grove, NW2

£650,000

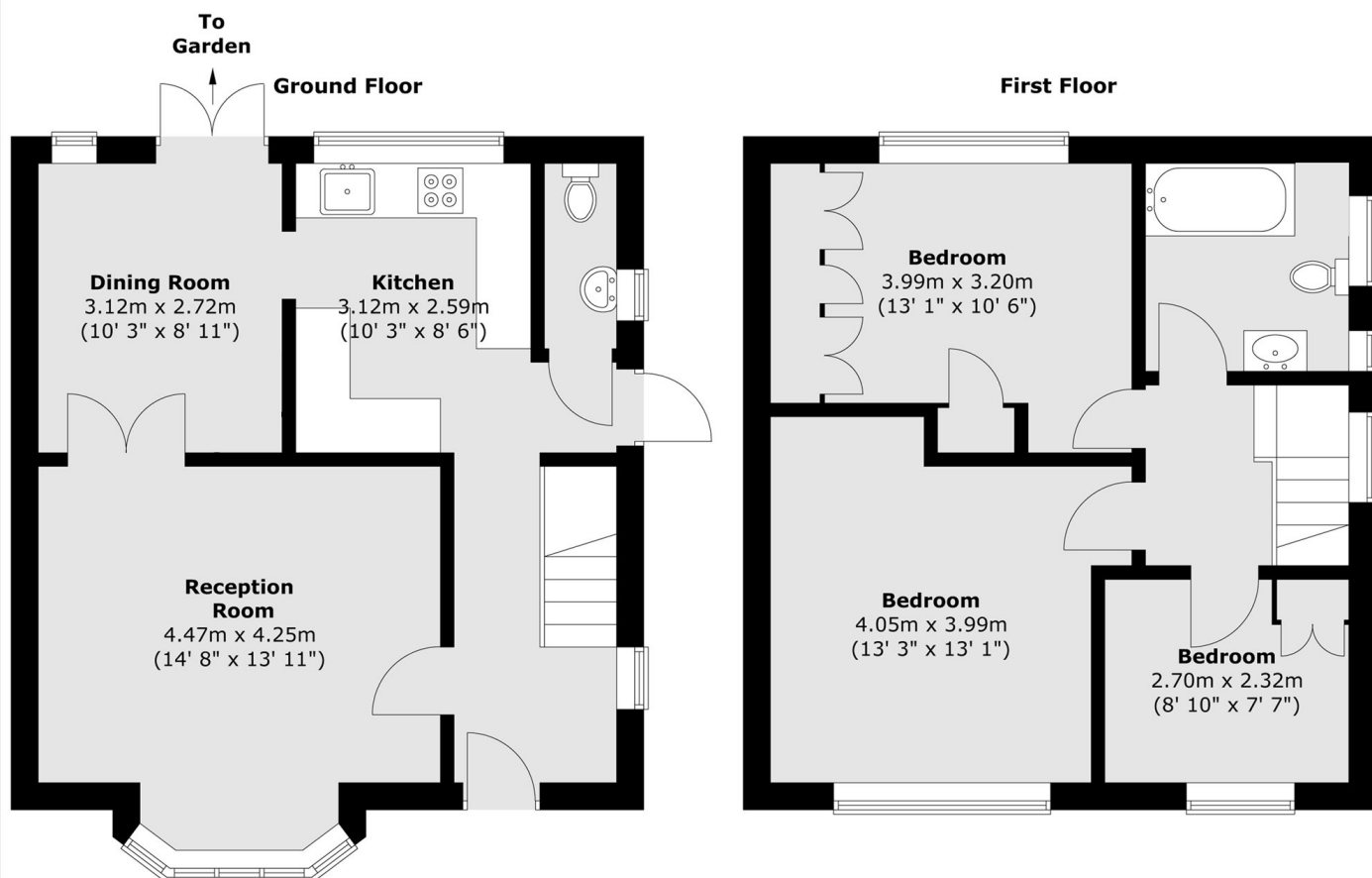
A three bedroom semi-detached family home, with two reception rooms, a fitted kitchen, family bathroom and a separate WC. The property comes with access to a private garden and is in a perfect location for transport links and local amenities.

Prayle Grove is ideally situated within a ten minute walk of Brent Cross West Railway Station and Brent Cross Underground Station (Northern Line). The area also offers easy access to the shops, cafés, and restaurants of Golders Green and Cricklewood, along with excellent road connections via the A40, A406 North Circular, and the M1 motorway.

Features

- Three Bedrooms
- Two Reception Rooms
- Fitted Kitchen
- Family Bathroom And WC
- Private Garden
- Fantastic Location

Prayle Grove, London, NW2



Total area (approx.) : 89.8 sq. m (967 sq. ft)