

60 Lindsey Street

Epping, Essex

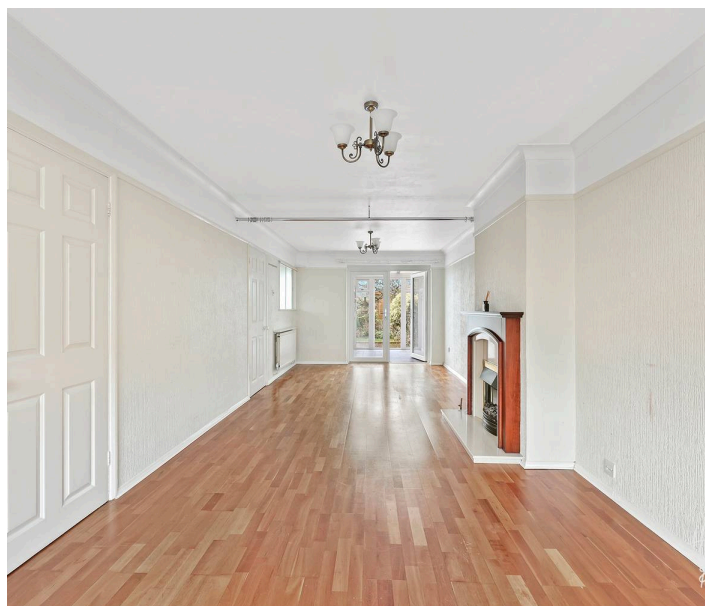
Guide Price £600,000

Welcome to Lindsey Street. Spanning three floors and filled with scope to add your own stamp, this superb family home with garage and driveway is a great find.

Council Tax band: E

Tenure: Freehold

- Driveway & Garage
- Opportunity to add own stamp
- Arranged across three floors
- Spacious lounge / diner
- Short walk to Epping high street
- Chain free
- Beautiful Views



Hallway

WC

Lounge / Dining Room
27' 6" x 10' 2" (8.37m x 3.10m)

Kitchen
15' 1" x 8' 11" (4.61m x 2.72m)

Conservatory / Shower Room
7' 11" x 6' 4" (2.42m x 1.92m)

Bedroom
14' 10" x 10' 2" (4.52m x 3.10m)

Bedroom
13' 0" x 10' 2" (3.95m x 3.10m)

Bedroom
7' 0" x 5' 11" (2.13m x 1.81m)

Shower Room
6' 11" x 5' 11" (2.11m x 1.81m)

Bedroom
11' 11" x 11' 9" (3.63m x 3.57m)



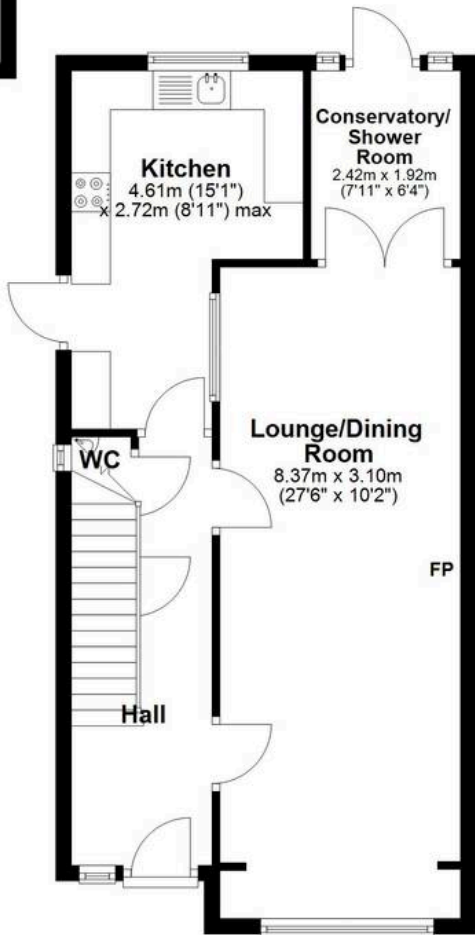


Ground Floor

Main area: approx. 52.6 sq. metres (566.0 sq. feet)
Plus garages, approx. 12.8 sq. metres (137.4 sq. feet)



Garage
5.32m x 2.40m
(17'6" x 7'10")



Kitchen
4.61m (15'1")
x 2.72m (8'11") max

**Conservatory/
Shower
Room**
2.42m x 1.92m
(7'11" x 6'4")

**Lounge/Dining
Room**
8.37m x 3.10m
(27'6" x 10'2")

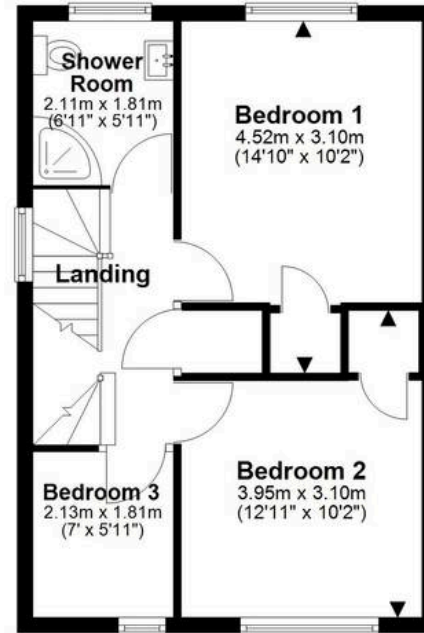
WC

Hall

FP

First Floor

Approx. 38.3 sq. metres (412.7 sq. feet)



**Shower
Room**
2.11m x 1.81m
(6'11" x 5'11")

Bedroom 1
4.52m x 3.10m
(14'10" x 10'2")

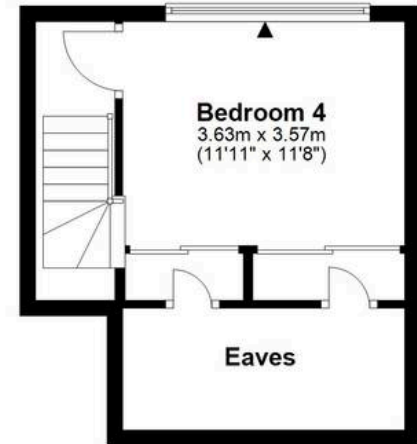
Landing

Bedroom 3
2.13m x 1.81m
(7' x 5'11")

Bedroom 2
3.95m x 3.10m
(12'11" x 10'2")

Second Floor

Main area: approx. 13.8 sq. metres (148.7 sq. feet)
Plus eaves, approx. 5.7 sq. metres (61.2 sq. feet)



Bedroom 4
3.63m x 3.57m
(11'11" x 11'8")

Eaves

Main area: Approx. 104.7 sq. metres (1127.4 sq. feet)

Plus garages, approx. 12.8 sq. metres (137.4 sq. feet)
Plus eaves, approx. 5.7 sq. metres (61.2 sq. feet)