

## Cromwell Road, SW7

£900 Per week

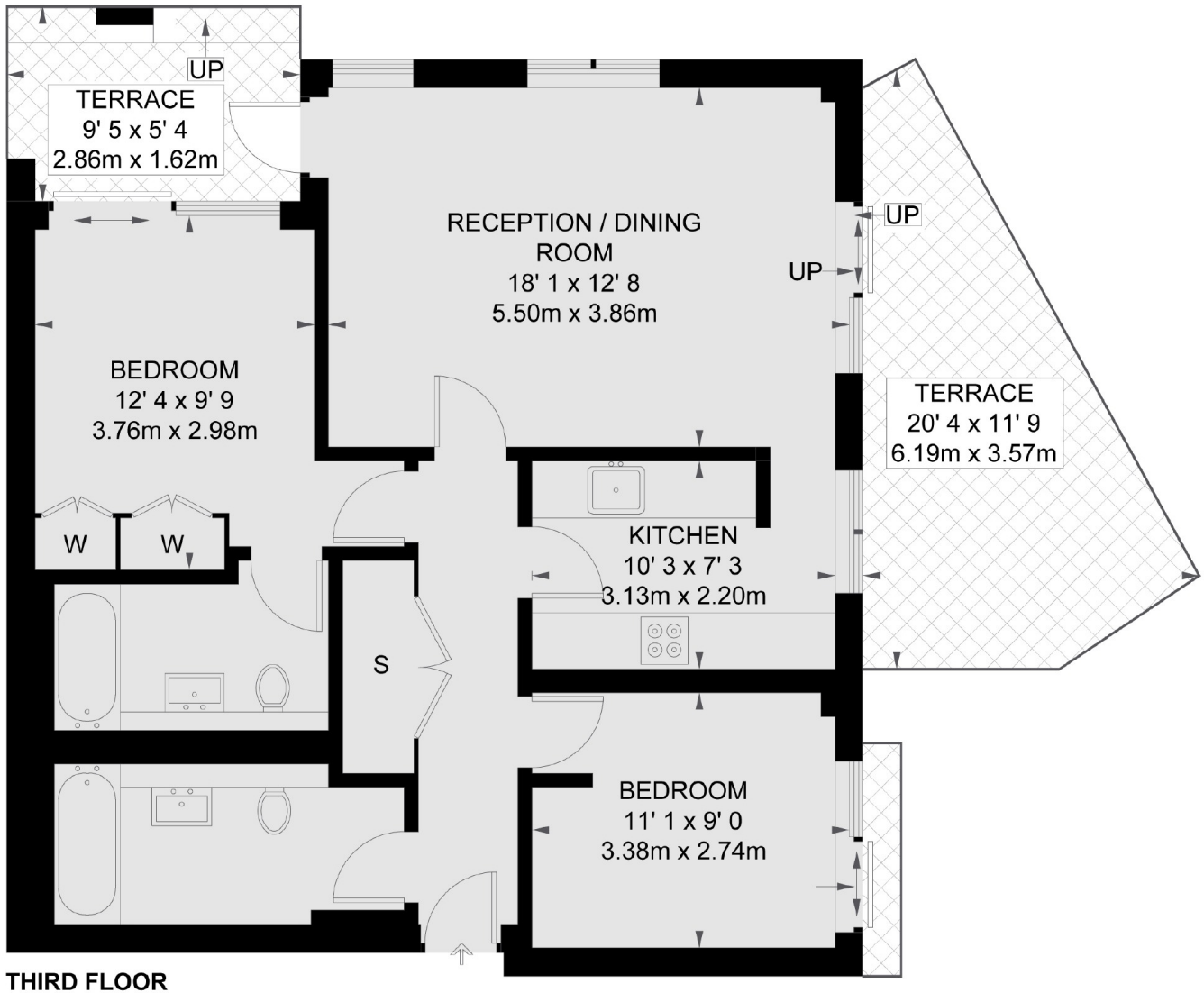
This well-presented two bedrooms apartment occupies the third floor of a popular and well-located development in South Kensington. It offers neutral decor, two equal double bedrooms (one with en suite), a separate bathroom, a spacious reception room, and a kitchen.

Additional benefits include a 24-hour porter service and lift access. The apartment is ideally located near Sainsbury's, Waitrose, and a range of shops and cafés, and is within close proximity to Gloucester Road Underground Station, served by the District, Circle, and Piccadilly lines.

### Features

- Two Bedrooms
- Two Bathrooms
- Patio
- Balcony
- Wood Floor
- 24-hour porter

# Cromwell Road, London, SW7



TOTAL APPROX. FLOOR AREA 795 SQ. FT. (73.9 SQ. M.)  
TOTAL APPROX. TERRACE AREA 204 SQ. FT. (19 SQ. M.)