

Buy. Sell. Rent. Let.



Devonshire Avenue, Grimsby



When it comes to
property it must be


lovelle



£299,950



A characterful three-bedroom semi-detached family home for sale in a sought-after area of Grimsby, featuring multiple reception rooms with original period details, an open-plan kitchen/dining/sun room opening to an elevated deck and mature private garden, plus generous parking, garage with inspection pit and brick-built workshop and summer house, all within easy reach of schools, amenities, nearby parks and transport links.

Key Features

- Traditional Semi-Detached House
- Three Generous Bedrooms
- Open Plan, Sociable Layout
- Characterful Features
- Private, Well Stocked Gardens
- Large Driveway, Garage With Inspection Pit, Workshop
- EPC rating C
- Tenure: Freehold





Lovelle offer to market this three-bedroom semi-detached house in a sought-after residential area of Grimsby, combining traditional character with practical modern living. Situated on an elevated plot set back from the road, the property presents well from the kerb, with a large driveway providing ample off-road parking and access to a garage, ideal for buyers seeking both family space and hobby or storage options.

On entering the house, an entrance porch with ornate tiled floor leads into a particularly impressive hall. This space immediately showcases the traditional character of the home, featuring original parquet flooring, stained glass windows and a grand return staircase rising to the first floor. Off the hall there is a useful cloakroom with WC and sink, providing convenient facilities on the ground floor.

The ground floor offers three well-defined reception areas. To the front is a formal lounge with bay window, traditional fire surround incorporating a gas fire, coving and a ceiling rose, creating a comfortable and elegant reception space. A further sitting/family room sits centrally, featuring an electric fire, plate rack and decorative work to the ceiling. This room flows in an open-plan arrangement into the rear dining/sun room, offering a flexible layout suitable for both everyday family life and more formal entertaining.

The dining/sun room is a particular highlight. It benefits from a vaulted ceiling with skylights, allowing light to flood the space, and enjoys attractive views over the garden. Sliding doors open directly onto an elevated decked area, effectively extending the living and dining space outdoors in suitable weather. This area is ideal for al fresco dining or simply sitting out to enjoy the outlook over the garden.

The kitchen is arranged open plan, creating a sociable and practical hub to the home. It is fitted with modern units and worktops, incorporating an oven, 5-ring gas hob, sink, washing machine and dishwasher. The open-plan design ensures that whoever is cooking can remain connected with family or guests.

Upstairs, the property provides three bedrooms. The main and second bedrooms are both doubles, each benefitting from built-in wardrobes for practical storage. The second bedroom also features a sink with drawers, adding extra convenience. The third bedroom is a spacious single, offering flexibility as a child's room, home office or guest bedroom. The bedrooms are served by a well-appointed bathroom, fitted with modern tiles, bath, separate shower, sink and WC, together with a towel radiator.

Externally, the rear garden is a notable feature of this property. Accessed from the elevated decked area off the family dining/sun room, with lighting and steps leading down, it offers a pleasant and very private setting. The garden is well stocked with an array of plants and shrubs, creating a mature and established feel. It is complemented by a summer house and a brick-built workshop, adding to the practical and leisure options available within the plot. The garage includes an inspection pit, which may be of particular interest to motoring enthusiasts or those needing space for maintenance work.

The house benefits from uPVC double glazing and gas central heating, supporting comfortable and efficient day-to-day living.

The location places the property within easy reach of Grimsby's local amenities, schools and green spaces. Families will appreciate the choice of nearby primary and secondary schools, as well as access to local parks such as Peoples Park for recreation. Grimsby town centre offers a range of shops, supermarkets, cafes and services, with further leisure and dining options available in the wider area, including along the Cleethorpes seafront a short drive away.

Public transport links are convenient. Grimsby town centre provides bus connections across the local area, and Grimsby Town railway station offers services to destinations including Manchester, Sheffield and Lincoln. Typical journey times are around 1 hour to Lincoln and approximately 2 hours to Manchester (via connections), supporting commuter or leisure travel by rail. Road links via the A16 and A180 place the property within practical reach of surrounding towns and the wider regional network.

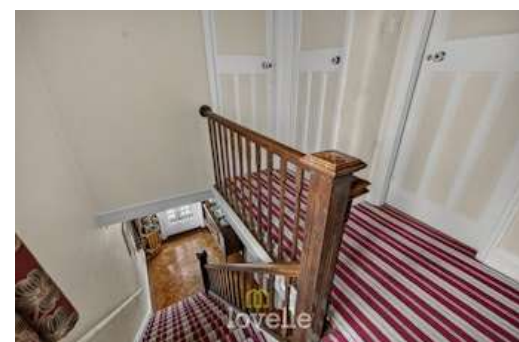
Overall, this three-bedroom semi-detached house will appeal to families and buyers seeking a traditional home with character features, multiple reception rooms, generous parking and well-planned garden space, in a location convenient for schools, amenities, parks and transport links.

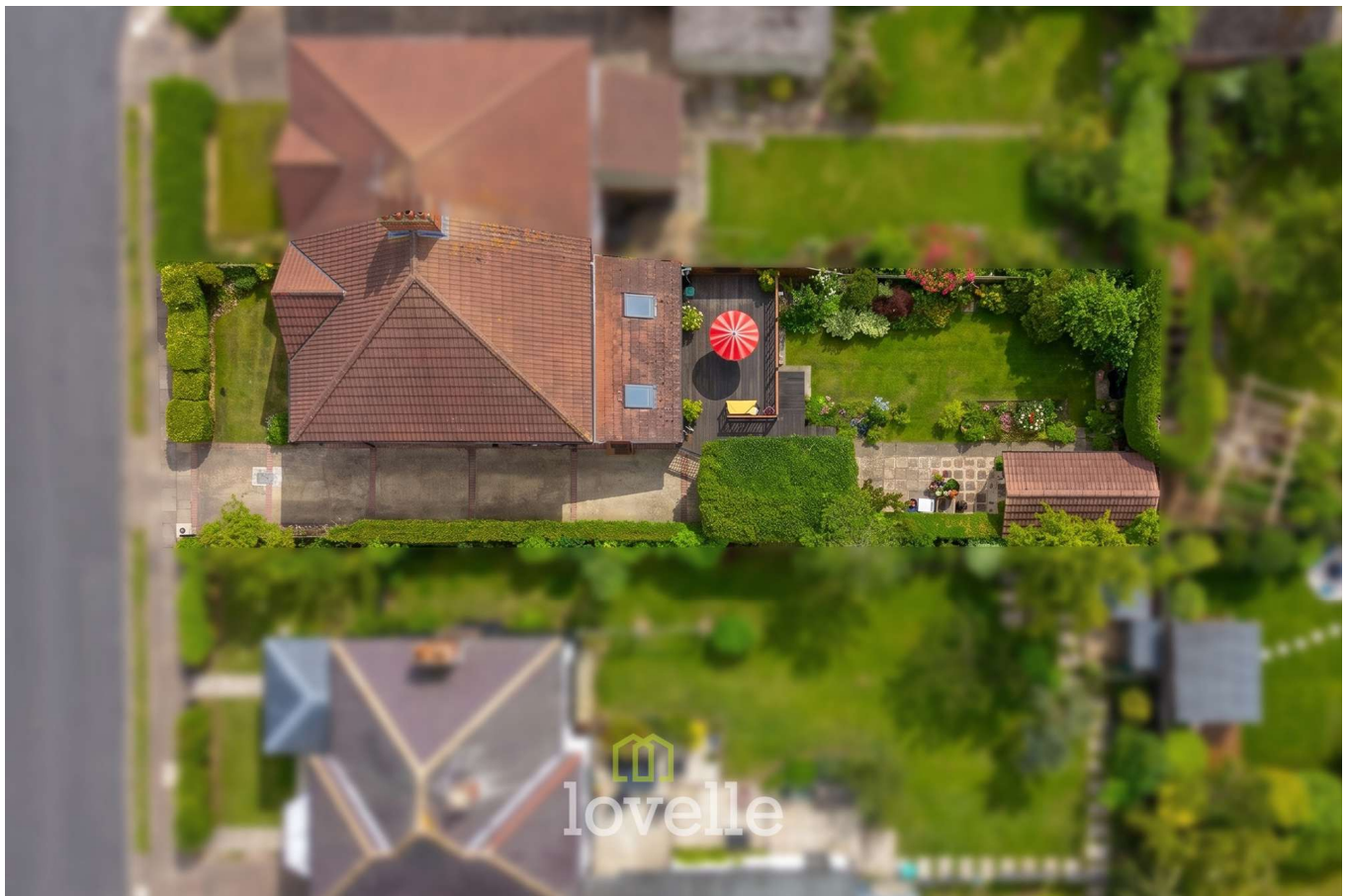
Disclaimer

We endeavour to make our sales particulars accurate and reliable, however, they do not constitute or form part of an offer or any contract and none is to be relied upon as statements of representation or fact. Any services, systems and appliances listed in this specification have not been tested by us and no guarantee as to their operating ability or efficiency is given. All measurements have been taken as a guide to prospective buyers only, and are not precise. If you require clarification or further information on any points, please contact us, especially if you are travelling some distance to view.

Mobile and broadband

It is advised that prospective purchasers visit checker.ofcom.org.uk in order to review available wifi speeds and mobile connectivity at the property.

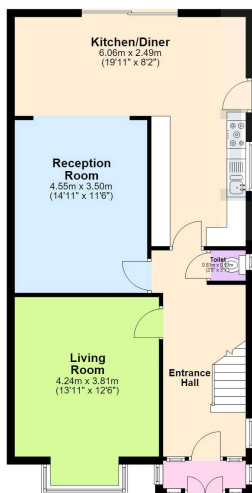
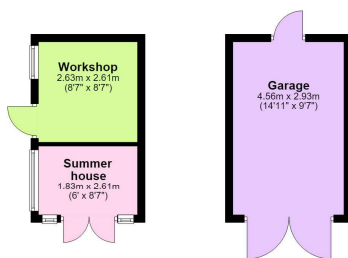






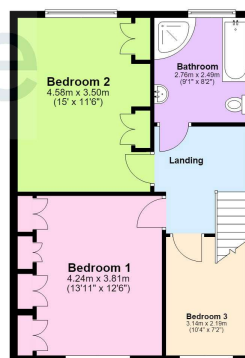
Ground Floor

Approx. 98.6 sq. metres (1061.3 sq. feet)



First Floor

Approx. 54.4 sq. metres (585.3 sq. feet)



Total area: approx. 153.0 sq. metres (1646.6 sq. feet)

The provided floor plan is intended for general informational purposes only and may not accurately represent the exact dimensions, layout, or features of the property. The floor plan should not be relied upon for making decisions about purchasing, renting, or modifying the property. Actual measurements and features may vary. It is recommended that interested parties conduct a physical inspection of the property to verify the accuracy of the floor plan and obtain specific information about the property's condition, amenities, and any other relevant details.
Plan produced using PlanIt.



When it comes to **property**
it must be

lovelle

01472 251918

grimsby@lovelle.co.uk

