



23 Churchill Way

Burton Latimer, Northamptonshire NN15 5RX



Simpson & Partners

Nestled in the charming area of Burton Latimer, this delightful semi-detached house on Churchill Way offers a perfect blend of comfort and modern living. The property boasts an inviting layout with two spacious reception rooms, providing ample space for both relaxation and entertaining. The heart of the home is the expansive kitchen and dining area, ideal for family gatherings and culinary adventures.

This extended three-bedroom residence is perfect for families or those seeking extra space. Each bedroom is well-proportioned, ensuring a restful retreat at the end of the day. The family bathroom is conveniently located, catering to the needs of the household.

One of the standout features of this property is the generous parking space, accommodating up to three vehicles, which is a rare find in this area. The outdoor space offers potential for gardening or simply enjoying the fresh air.

With its excellent location, this home is within easy reach of local amenities, schools, and transport links, making it an ideal choice for those looking to settle in a friendly community. This semi-detached house on Churchill Way is not just a property; it is a place where memories can be made. Don't miss the opportunity to make it your own.

£250,000



3

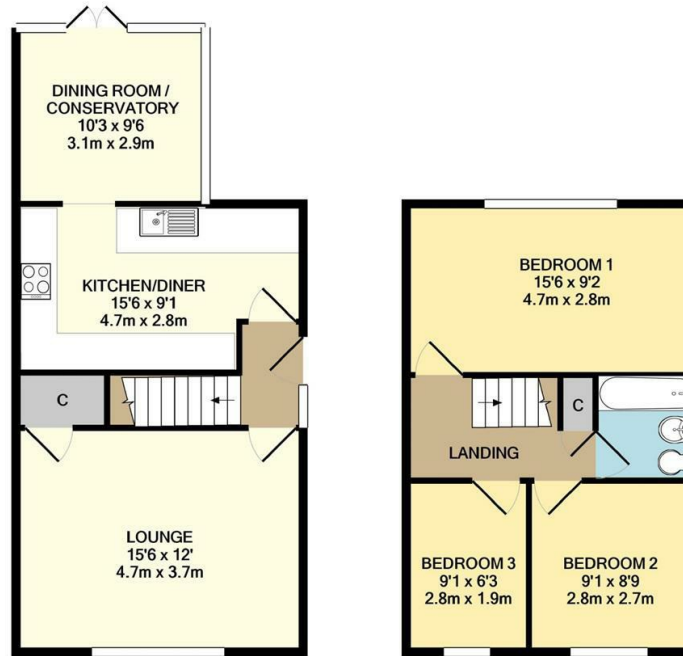


1



2





GROUND FLOOR

1ST FLOOR

Whilst every attempt has been made to ensure the accuracy of the floor plan contained here, measurements of doors, windows, rooms and any other items are approximate and no responsibility is taken for any error, omission, or mis-statement. The plan is copyright to Simpson and Partners and is for illustrative purposes and should only be used as such by any prospective purchaser. The services, systems and appliances shown have not been tested and no guarantee as to their operability can be given.
Made with Metrigis ©2020



Energy Efficiency Rating

	Current	Potential
<i>Very energy efficient - lower running costs</i>		
(92 plus) A		
(81-91) B		
(69-80) C		
(55-68) D		
(39-54) E		
(21-38) F		
(1-20) G		
<i>Not energy efficient - higher running costs</i>		
England & Wales	EU Directive 2002/91/EC	



When you buy with Simpson and Partners, you know **you'll be in safe hands**. From the moment you walk through our doors, we'll make you **feel truly welcome**. Our sales consultants and financial advisors will take you through **every step of the process**, offering **free expert advice** along the way, from help choosing the right mortgage and insurance through to finding your conveyancer. And if you need help selling your home too, **with over 20 years of local experience, you can trust us to get you moving**.



**Simpson
& Partners**

Making Every
Journey Personal



01536 518200

kettering@simpsonandpartners.co.uk

<https://www.simpsonandpartners.co.uk/>

1 Silver Street, Kettering, Northants, NN16 0BN