



Rothschild Road, London, W4
Guide Price £1,300,000

WHITMAN & CO.
SALES · LETTINGS · COMMERCIAL



A light and spacious four-bedroom Victorian home, ideally situated in a sought-after residential area, benefiting from a south-facing garden and a separate studio.

The property offers a generous master bedroom with en suite bathroom, three further bedrooms, a family bathroom, and a guest cloakroom. The ground floor features a bright 26' through reception room and a well-proportioned 19' kitchen/breakfast room.

Conveniently located within close proximity to tube, rail, and bus links, as well as the wide selection of shops, bars, and restaurants along Chiswick High Road.



Rothschild Road, W4

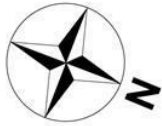
Approximate Gross Internal Area

150.37 sq m / 1618 sq ft

(Including Eaves Storage & Store / Office)

Eaves Storage : 4.91 sq m / 53 sq ft

Store / Office : 10.25 sq m / 110 sq ft

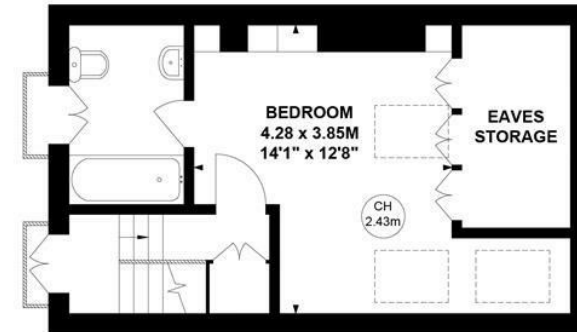


Key :

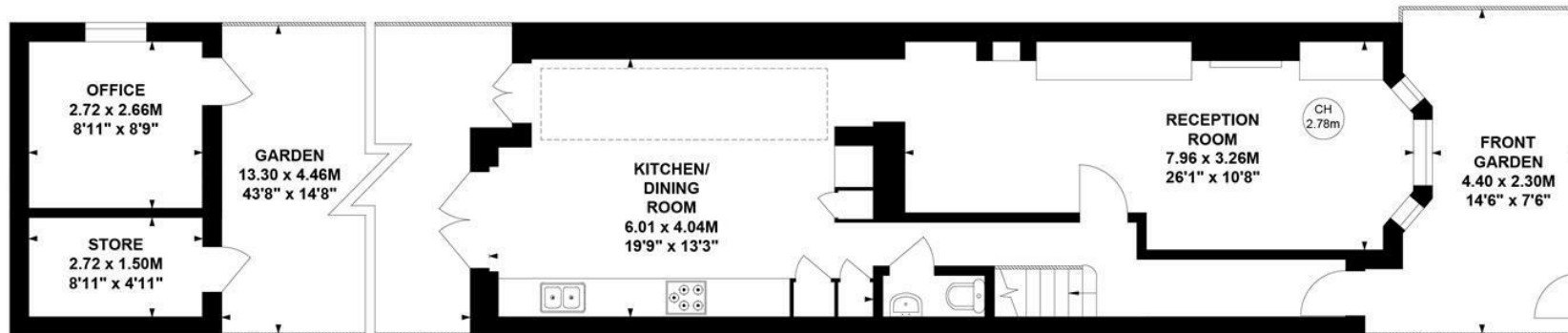
CH - Ceiling Height



First Floor



Second Floor



Ground Floor

Not to scale, for guidance only and must not be relied upon as a statement of fact.

All measurements and areas are approximate only

- Sought after residential area
- South-facing garden
- Garden studio

- Four bedrooms
- 26' through reception room
- Fantastic transport links

Tenure - Freehold
Local Authority - Ealing
Council Tax - Band F

