



**Modern
Auction**

**£100,000
Leasehold**

1x  1x  1x 

**Upper Wickham Lane,
Welling, Kent, DA16**

Wards
Helping you move forwards



Main features

- Chain free
- Cash buyers only
- For sale by Modern Auction – T&C's apply
- Subject to an undisclosed Reserve Price
- Buyer's fees apply

Accommodation

GROUND FLOOR

Hallway

Bathroom: 9'6 x 4'6 (2.90m x 1.37m)

FIRST FLOOR

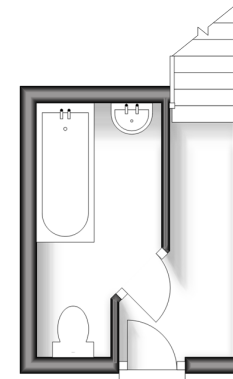
Landing

Bedroom : 14'5 x 11'2 (4.40m x 3.41m)

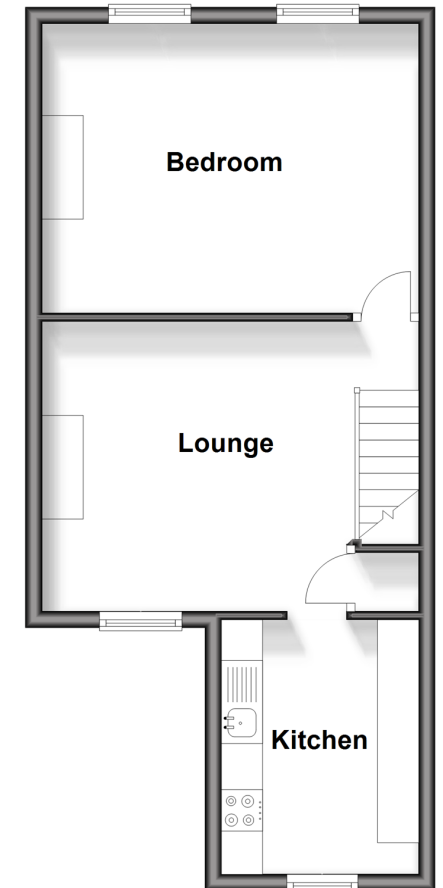
Lounge: 14'6 x 11'0 (4.42m x 3.36m)

Kitchen: 9'7 x 7'5 (2.92m x 2.26m)

Ground Floor
Approx. 7.3 sq. metres (79.1 sq. feet)



First Floor
Approx. 40.0 sq. metres (430.3 sq. feet)



Call Welling - 020 8301 6679 ■ wardsofkent.co.uk

- Legal advice should be taken to verify fixtures/fittings, planning, alterations and/or lease details
- Appliances & services are untested, dimensions are approximate and floor plans are not to scale



15008971/20250723/SS/LK