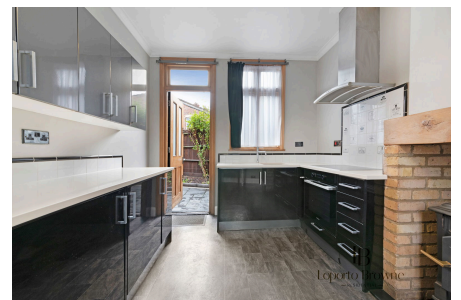


## Harlesden Gardens, NW10

Guide Price £750,000

 3  1  2



**Guide Price: £750,000 to £800,000**

This outstanding three-bedroom end-of-terrace house is presented to a superb standard, blending original 1920s Art Deco character with thoughtful modern upgrades. The home enjoys an enviable end position, allowing for a rare wraparound garden, off-street parking and a separate garage—practical perks that genuinely set it apart.

The ground floor is full of personality, with an impressive entrance hall leading to two elegant reception rooms. Both feature original cornicing, ceiling roses and fireplaces, with one boasting a wood-burning stove framed by a classic wooden mantelpiece. Bay windows with double

glazing flood the space with natural light, while a mix of wooden floors and carpet adds warmth and texture throughout.

## Key Features

- Guide Price: £750,000 to £800,000
- 1920s Art Deco end-of-terrace family home
- Three generous double bedrooms with high ceilings and original fireplaces
- Two reception rooms with cornicing, ceiling roses and fireplaces
- Bay-fronted reception with feature fireplace and original detailing
- Separate contemporary eat-in kitchen with quartz worktops
- Miele induction hob & oven, Bosch washing machine, Miele fridge, AEG freezer
- Family bathroom with bath plus separate WC
- South-west facing wraparound garden, off-street parking & garage
- Large attic offering excellent future potential

