



Strone House, 5B Strone, Drumnadrochit, IV63 6XL

Offers Over £875,000

🛏️ 4 🚿 3 🚗 2



- HOME REPORT UNDER EPC LINK
- ARCHITECT-DESIGNED DETACHED HOME
- SET ON THE BANKS OF LOCH NESS
- SET ON PLOT OF APPROXIMATELY 3 ACRES
- IMMACULATELY PRESENTED THROUGHOUT WITH HIGH-END FINISHES
- BRIGHT AND SPACIOUS OPEN-PLAN LIVING
- WRAPAROUND DECKING, PATIO, AND ENCLOSED LAWN AREA
- FOUR DOUBLE BEDROOMS, PRINCIPAL SUITE WITH PRIVATE BALCONY AND EN
- CONVENIENTLY LOCATED JUST 1.5 MILES FROM DRUMNADROCHIT AND 15 MILES FROM INVERNESS
- BOATHOUSE WITH LOCH FISHING RIGHTS



Strone House represents a unique opportunity to purchase an architect-designed detached home set on the banks of iconic Loch Ness. Situated on a substantial plot of approximately 3 acres this immaculate property offers modern open-plan living with high-end finishes, wraparound decking, four double bedrooms, a principal bedroom with a private balcony, and a boathouse with freshwater fish fishing rights on Loch Ness. Viewing is highly recommended.

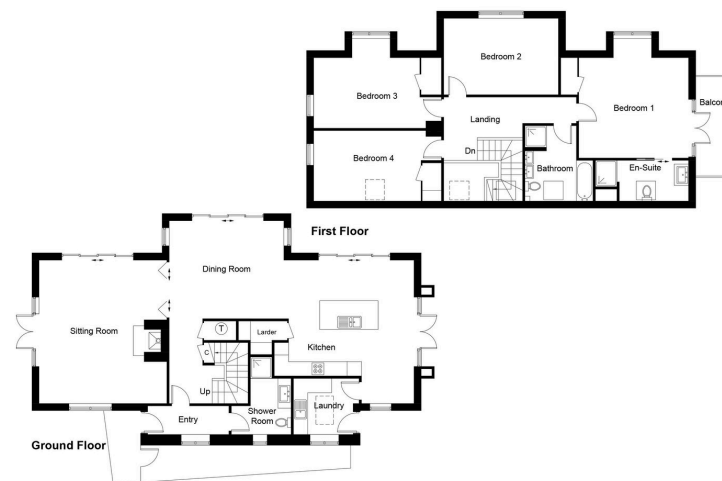


Illustration for identification purposes only, measurements are approximate, not to scale. Fourtabs.co © (1299623)