



## Westbourne Gardens, W2

### £450,000

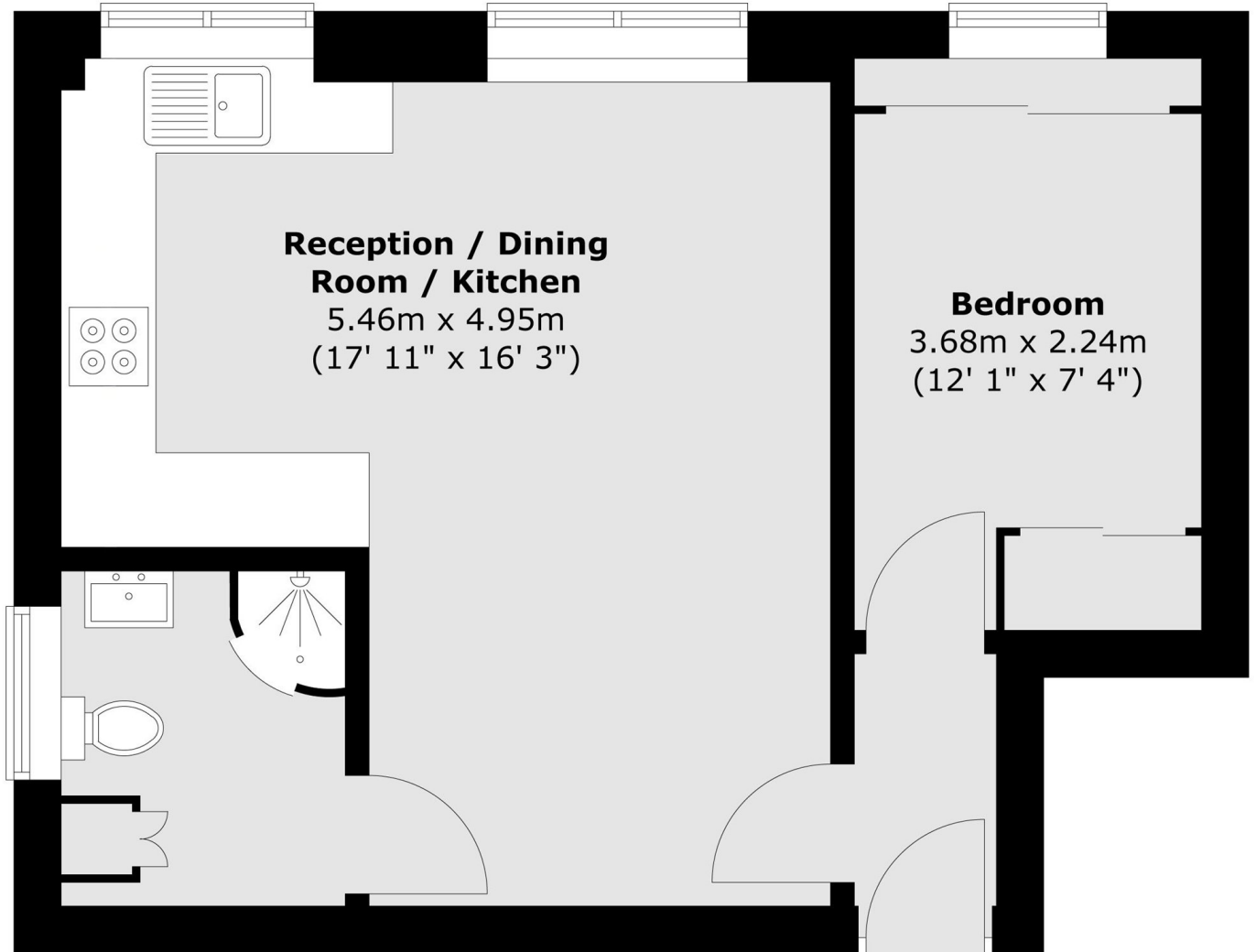
A beautifully presented and well-proportioned one double bedroom apartment in a purpose built building (with lift). There is an open plan kitchen and reception room, with space to dine making this is an ideal pied a terre or first time purchase.

Westbourne Gardens is ideally located between the boutiques and restaurants in Notting Hill, the convenient transport links in Paddington with Royal Oak station just moments away, the Whiteley's regeneration in Bayswater. The green spaces of Hyde Park are a short walk away alongside Porchester Centre and Waitrose.

### Features

- One Double Bedroom
- Open Plan
- Good Condition
- Purpose Built
- Refurbished Communal Areas
- Lift

# Westbourne Gardens, London, W2



Total area (approx.) : 37.9 sq. m (408 sq. ft)