




1 Ellerbeck Avenue, Nunthorpe

Offers Over £425,000

 4  3  3



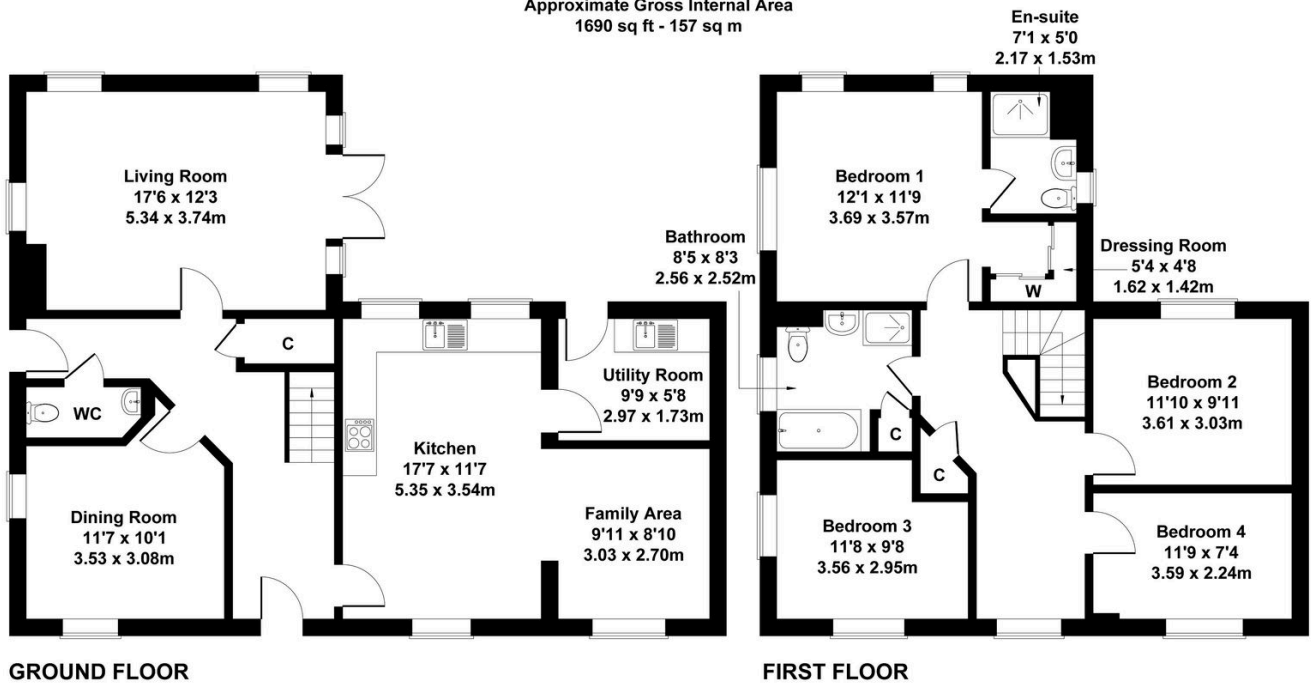
The Yorkshire Property Agency is delighted to introduce this fabulous detached four-bedroom family home situated in the ever-popular Grey Towers village in Nunthorpe, TS7. The property boasts an immaculate interior and a private wrap-around plot.

Key Features

- Fabulous detached family home
- Wrap around landscaped gardens
- Garage
- Excellent location in the popular Grey Towers development
- Well-located close to local amenities
- Four bedrooms
- Off-street parking
- Double-fronted style
- Council tax band G
- Modern open-plan kitchen / diner

1 Ellerbeck Avenue, Nunthorpe

Approximate Gross Internal Area
1690 sq ft - 157 sq m



Not to Scale. Produced by The Plan Portal 2025
For Illustrative Purposes Only.