



## Marlborough Road, W4

£784 Per week

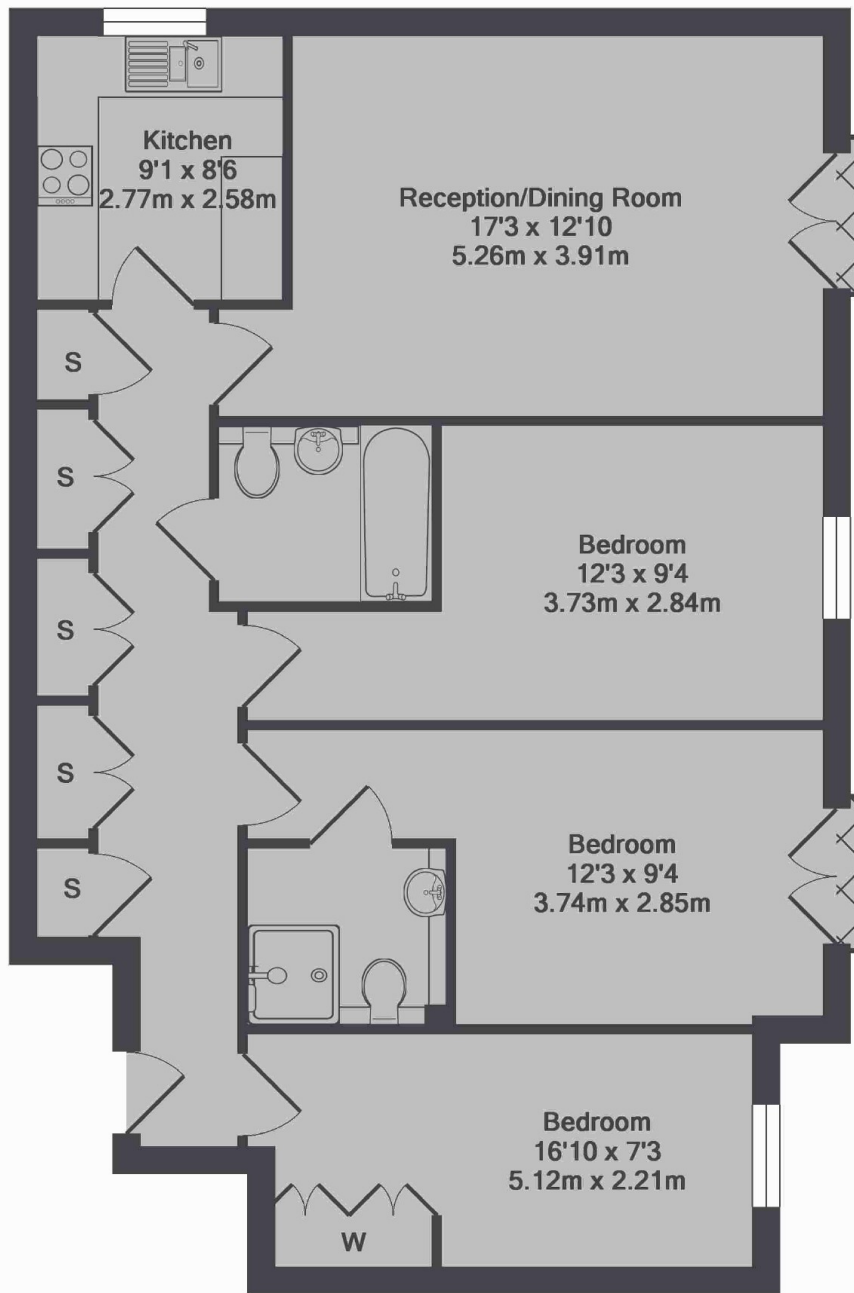
A three bedroom, second floor apartment in this popular purpose-built block with wood flooring throughout, built-in wardrobes and two bathrooms.

Marlborough Road is just off Chiswick High Road and is located less than half a mile from both Gunnersbury and Chiswick Park underground stations.

### Features

- Three Bedrooms
- Two Bathrooms
- Purpose-Built
- Wood Flooring
- Central Location
- Transport Links

Marlborough Road,  
London, W4



Troubridge Court, W4  
Total Approx. Floor Area 986 Sq.Ft. (91.6 Sq.M.)